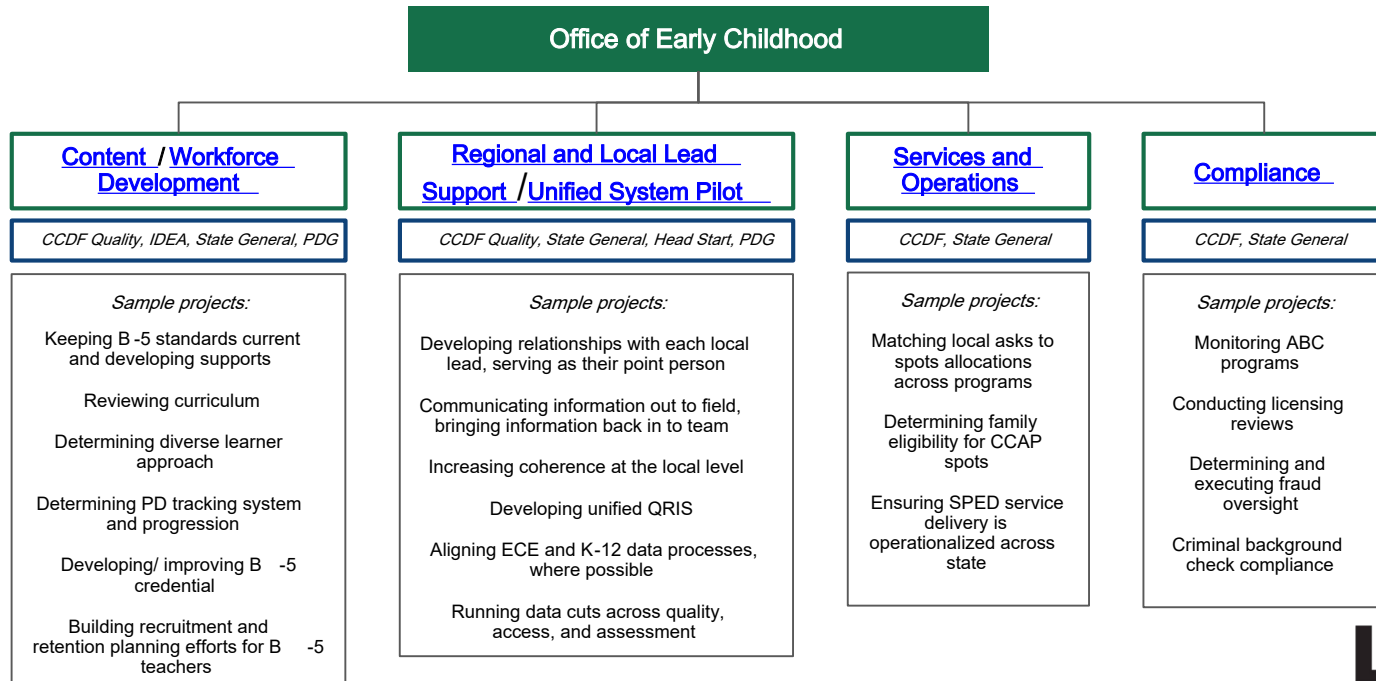


EXHIBIT C

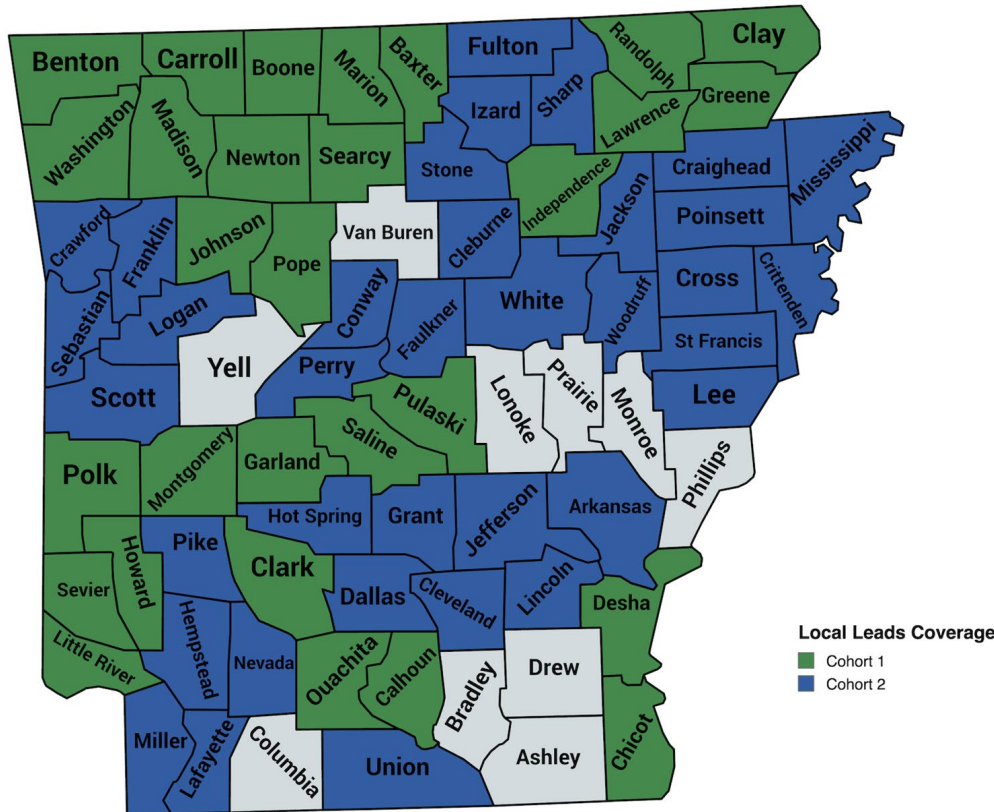
Arkansas Department of Education,
Office of Early Childhood

Unifying Early Childhood

As of August 1, 2023 nearly 250 early childhood staff transitioned from the DHS to the Office of Early Childhood at ADE. The unified early childhood office manages a core set of functions across all programs to ensure alignment across and seamless transition through for children, families, and providers.



Cohorts 1 and 2



With the onboarding of Cohort 2, there are now designated local lead organizations in 65 counties where nearly 80% of Arkansas's birth to five population lives!!

All corners of the state will have a local lead by October of this year.



What is CLASS?

The Classroom Assessment Scoring System tool, called CLASS for short:

- Measures the quality of teacher-child interactions
 - Is correlated to educational outcomes for children
 - Is used in classrooms serving children from birth to 3rd grade across the country

These evidence-based, in-depth measures help to inform a consistent definition of early childhood quality, show how well classrooms support children's growth and development, and provide teachers and leaders with actionable information to improve.



Data on Licensed Programs

August 2022 –August 2023

- 161 new licenses were approved with capacity of 14,201
31 licenses were closed with capacity of 2,706
Net capacity gain =11,495

August 2023-August 2024

105 new licenses were approved with capacity of 11,124
4 licenses were closed with capacity of 261
Net capacity gain =10,863



Best in Early Education Systems

Arkansas was ranked number 1 for the third year in a row by WalletHub for Early Education Systems .

- WalletHub utilizes 12 key metrics including quality benchmarks and spending across early childhood
- One area to improve -Access

