

**Senate Children and Youth
and House Aging, Children,
and Youth Committee
Thursday,
October 24th, 2023**

EXHIBIT C2



What is Dementia?

- Dementia is a collection of symptoms related to cognitive decline
- This can include
 - Cognitive symptoms
 - Behavioral symptoms
 - Psychological symptoms
- **Alzheimer's is the most common cause of dementia**
- Not everyone with cognitive decline has dementia. Some causes of cognitive decline are reversible.

TYPES OF DEMENTIA

Dementia is an umbrella term for loss of memory and other thinking abilities severe enough to interfere with daily life.

- **Alzheimer's**
- **Vascular**
- **Lewy body**
- **Frontotemporal**
- **Other**, including Huntington's
- *** Mixed dementia:** Dementia from more than one cause



PREVALENCE

Number of People Aged 65 and Older with Alzheimer's (2020)

60,400



CAREGIVING

of Caregivers

155,000

Total Hours of Unpaid Care

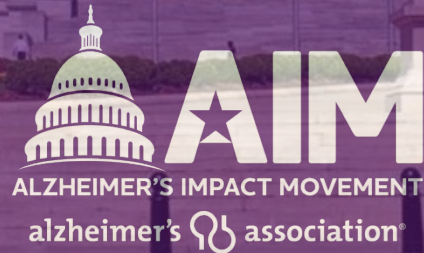
270,000,000

Total Value of Unpaid Care

\$4,448,000,000

**Source:
Alzheimer's
Disease
Facts and
Figures 2024*

Alzheimer's and Dementia Advisory Council Annual Report



Alzheimer's and Dementia Advisory Council



Sen. Clint Penzo
Co-Chair ADAC



Rep. Julie Mayberry
Co-Chair ADAC

State Agency Partners

AR. Department of
Health

AR. Department of
Human Services

AR. Minority Health
Commission

Alzheimer's and Dementia Advisory Council

- AARP
- Alzheimer's Association
- Alzheimer's Arkansas
- Arkansas HealthCare Association
- Arkansas Hospital Association
- Broyles Foundation
- Arkansas Residential Assisted Living Assoc.
- Arkansas Home-based Services Association
- Hospice and Palliative Care Association of Arkansas
- The University of Arkansas for Medical Sciences Centers on Aging
- Arkansas Medical Society

Alzheimer's State Plan

- **Public Awareness and Education** - Educating providers and general public on the importance of early detection, diagnosis, risk reduction, and support services.
- **Access and Quality of Care** - Enhancing quality of care across care settings and ensuring access to support services for Arkansas families.
- **Family Caregiver Support** - Increasing support services for family caregivers
- **Dementia Training and Workforce Development** - Ensuring the workforce is adequately trained and prepared to meet the unique needs of patients with Alzheimer's or other dementia



PUBLIC AWARENESS AND EDUCATION



Enacted Recommendations

Authorization of The Alzheimer's and Dementia Advisory Council (ACT 391; 2021)

Alzheimer's and Dementia Services Coordinator (S. 345 ACT 682; 2023) - Establishes the position of Dementia Coordinator within the Division of Aging at the Department of Human Services

Improved Data Collection - The ADH includes the Cognitive Decline and Caregiver Modules in the BRFSS.



Enacted Recommendations

Arkansas Department of Health awarded a Core Capacity BOLD Grant (2022)

- Updated state Website to include Alzheimer's Disease Information and resources
- Established a state-wide ADRD Coalition
- Increased Collaboration Efforts
 - Arkansas Minority Health Commission has also partnered with Alzheimer's Arkansas and The Alzheimer's Association to increase access to education and resources in underserved communities.



OPPORTUNITIES FOR PUBLIC HEALTH INTERVENTENTION ACROSS THE DEMENTIA LIFE COURSE

RISK REDUCTION | Primary Prevention



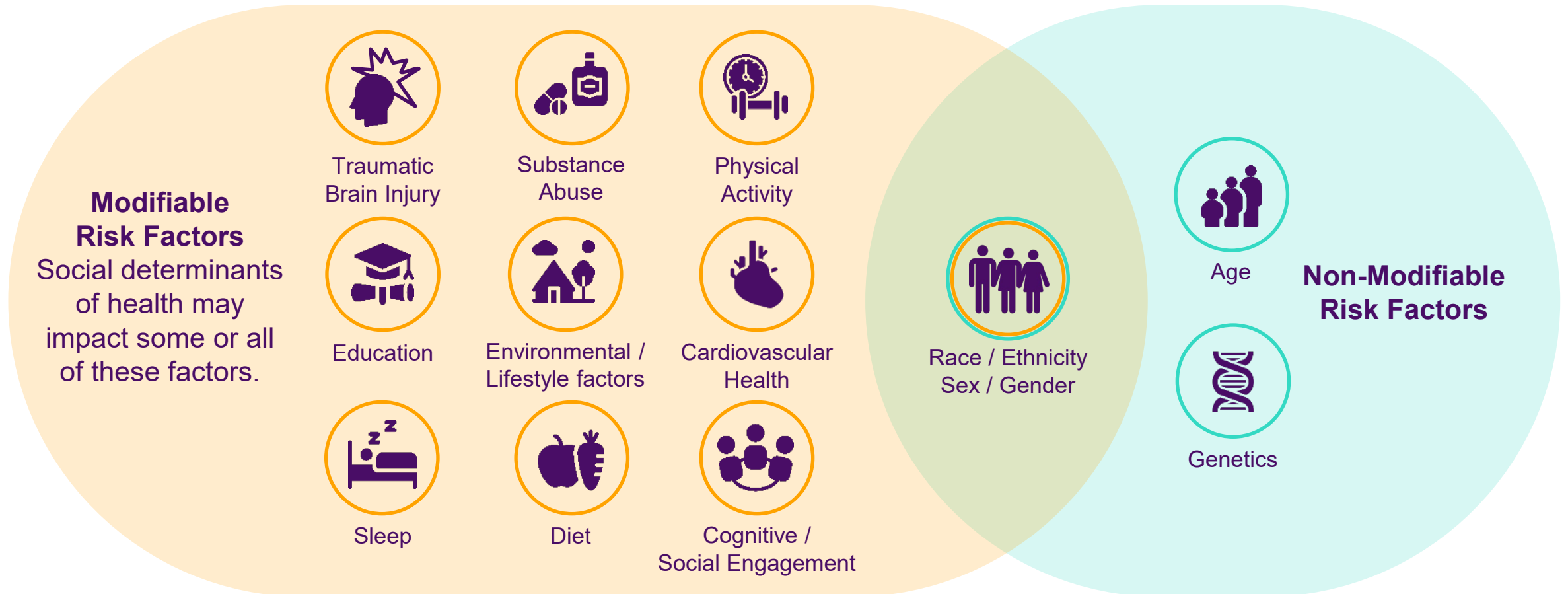
EARLY DETECTION AND DIAGNOSIS | Secondary Prevention



SAFETY AND QUALITY OF CARE | Tertiary Prevention



How Public Health Can Drive Risk Reduction



There is a lot we still don't know about these risk factors. We need to study risk from all angles and in all populations!



Pending Recommendations

Public Health Messaging on Brain Health, Risk Reduction, and Early Detection and Diagnosis (*Policy Recommendation*)

- Invest in public health infrastructure to broaden access to dementia education, provide ongoing support to clinicians, and disseminate the latest research findings.

Data Collection

- Establish a state-level Alzheimer's and Dementia Registry to track the prevalence of these conditions and monitor trends over time.



ACCESS AND QUALITY OF CARE



Enacted Recommendations

Ensure that Medicaid Waivers for Home and Community Based Services are inclusive of the Dementia Population:

Research and Support Innovative Approaches to Expand Access to Dementia Education: Alzheimer's Association; UAMS Centers on Aging; Alzheimer's Arkansas have all expanded access to community education, resources, and support services.



Pending Recommendations

Establish Dementia Resource Centers utilizing the state's existing Infrastructure. *(Area Agencies on Aging)*

Conduct a Statewide Needs Assessment on Dementia Care: Perform a comprehensive assessment to identify gaps and needs in dementia care across the state of telehealth technologies to improve access to dementia education, particularly in rural and underserved areas.

Ensure Equitable Access to FDA-Approved Treatments for Alzheimer's Disease *(Policy Recommendation)*



Pending Recommendations

Medicaid Coverage for Early Detection, diagnosis, and Care Planning Services (*Policy Recommendation*)

- In 2018, CMS established a billing code incentivizing providers to perform cognitive screenings and care planning services during the annual wellness visit. This benefit is covered under Medicare but is not provided to the state's Medicaid population.



SUPPORT FOR FAMILY CAREGIVERS



Enacted Recommendations

Alzheimer's and Dementia Caregiver Respite Grant Program:

- DHS include \$200,000 in the Division of Provider Services and Quality Assurance Budget (Funded by a Federal Block Grant)

The Program:

- Provides dementia caregivers with \$500 grant to secure respite services
- Eligibility:
 - Caregiver of someone with Alzheimer's or dementia
 - Must hire someone living outside of the home
 - Caregivers are eligible for two grants during the FY, must wait 6 months between award.
 - Grantee has awarded \$108,500 in this FY



The Public Health Impact of Alzheimer's and Dementia Family Caregivers

Over 155 thousand Arkansans provide **unpaid** care to people with Alzheimer's or other dementias. These caregivers provided more than **270 million** hours valued at over **\$4.448 BILLION.**





Cost of Unpaid Care

11 million
Americans
provided

18 billion
hours of
unpaid
care

\$339
billion



Caregiving

Who Are the Alzheimer's Caregivers?

- **Two thirds** are women and **one third** are daughters
- **One in three** is age 65 or older
- **More than half** take care of their parents
- One quarter of dementia caregivers are in “sandwich generation” of caregivers
- **41%** of caregivers have a household income of **\$50,000 or less**
- **66%** live with the care recipient in the community

Pending Recommendations

Establish a Permanent Alzheimer's and Dementia Caregiver Respite Grant Program: *(Policy Recommendation)*

- During the first two years, the program has exceeded its goal of allocating more than 30% of the respite funds to rural communities, expanding access to respite care in the most vulnerable portions of the state.
- Surrounding States have made investments in similar programs to ensure that family caregivers have access to respite services
 - Kansas \$650,000 (2024)
 - Tennessee Five year investment of \$1 Million
 - Mississippi \$350,000



DEMENTIA TRAINING AND WORKFORCE DEVELOPMENT



Enacted Recommendations

Establish Dementia-Specific Training Standards for the following:

- **Home Health and Home-Care Providers** ACT 70 Requires (2) hours of dementia training for home care providers
- **Law Enforcement Training:** ACT 202 Requires a minimum of (2) hours of dementia training for law enforcement and first responders
- **Assisted Living Communities** ACT 335 Require (4) hours of dementia training and (2) hours of annual continuing education for all direct care staff in Assisted Living Facilities

Establish dementia-specific requirements for certain DHS personnel (APS, LTC investigators..) The Alzheimer's Association has partnered with the agency to provide this training to DHS personnel.



Pending Recommendations

Dementia-Specific Training and Education: Develop and provide dementia-specific training and education aimed at supporting risk reduction, early detection, and diagnosis across various clinical settings. (*Policy Recommendation*)

- Ensure that healthcare professionals are adequately trained to identify signs of dementia and provide quality care at every stage of the Alzheimer's and Dementia Continuum of care



POLICY RECOMMENDATIONS

2025 Legislative Policy Recommendations

Public Awareness

- **Establish A Public Health Strategy to advance risk reduction, brain health, and early detection and diagnosis.**

Access and Quality of Care

- **Establish Medicaid Coverage for Cognitive Screening, Early detection and diagnosis, and care planning services.**
- **Access to FDA-Approved Treatments for patients in the early stages of Alzheimer's.**
- **Physicians should be encouraged to conduct assessments for individuals at a higher risk of developing Alzheimer's disease or related dementias.**

2025 Legislative Policy Recommendations

Dementia Training and Workforce Development

- **Continue to strengthen dementia training standards across care settings and healthcare professionals.**

Family Caregiver Support

- **Establish permanent funding for an Alzheimer's and Dementia Caregiver Grant Program.**



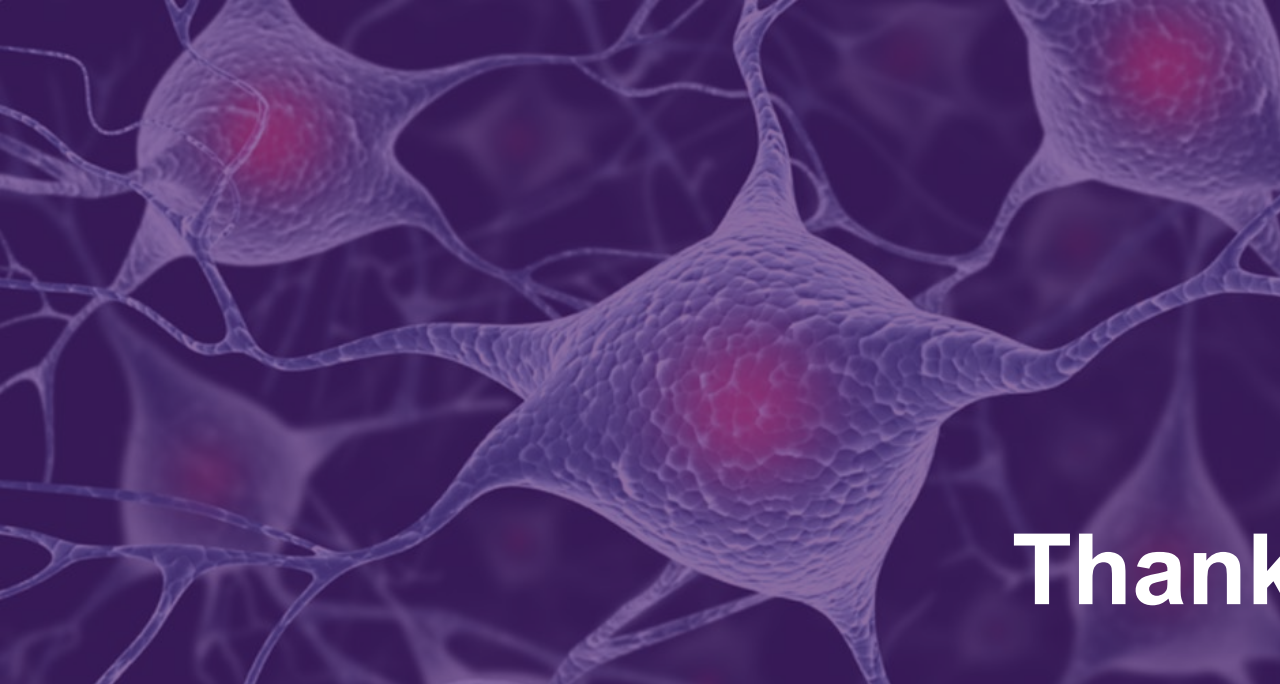
David Cook

Director of Government Affairs and
Public Policy
Alzheimer's Association - Arkansas
Chapter

501-253-1931

DMCOOK@ALZ.ORG





Thank You!



Questions & Discussion

