

**EXHIBIT B1**



TEEN CHALLENGE

**ADVENTURE RANCH**

EST.

1973

# Residential Treatment Facility for Teen Boys Ages 14-17

- ✓ **Substance Abuse**
- ✓ **Mental Health**
- ✓ **Maladaptive Behaviors**





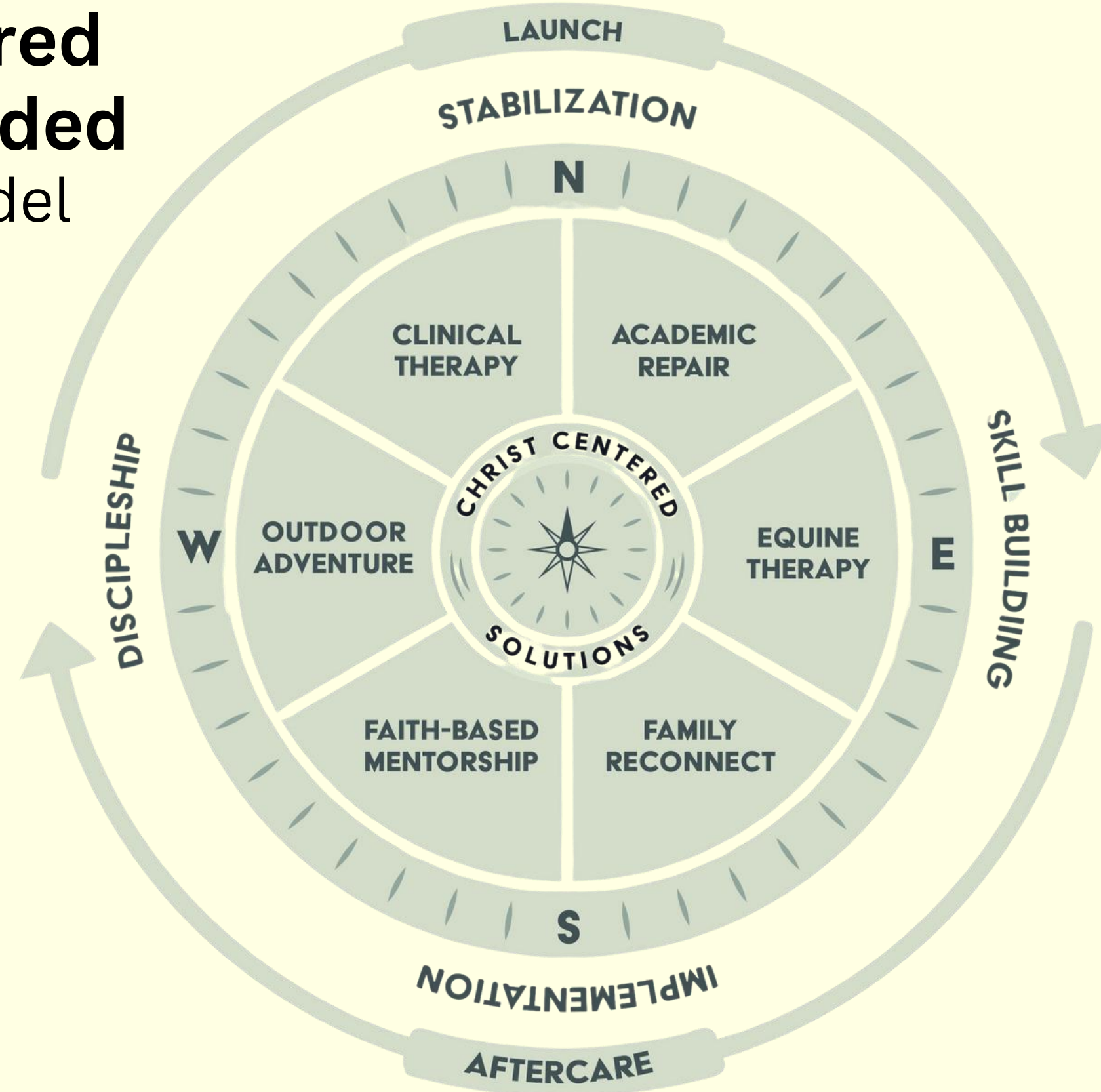
- 40-Bed Facility Est. 1973
- 2,000+ Families Helped
- 78% Long-Term Recovery Rate
- 99% Client Satisfaction Score



# 50 Years & Counting



# Christ-Centered Clinically-Minded Treatment Model



# 31-Acre Campus



# Peer Support



# Academic Repair

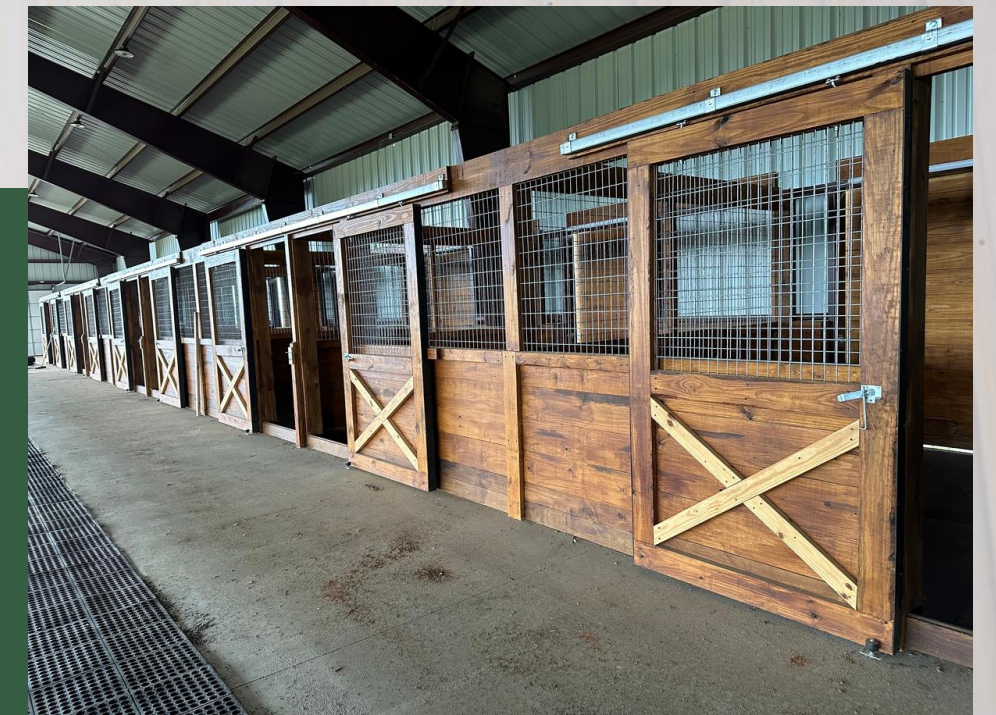


# Therapeutic Facilities



EQUESTRIAN CENTER

WARNING  
UNDER KANSAS LAW, AN EQUINE  
ACTIVITY SPONSOR OR PROFESSIONAL  
WILL NOT BE LIABLE FOR ANY INJURY TO,  
OR THE DEATH OF A PARTICIPANT IN,  
EQUINE ACTIVITIES RESULTING FROM THE  
INHERENT RISK OF EQUINE ACTIVITIES.





# Equine Therapy

Human-animal interactions significantly reduce anxiety and fear in therapeutic settings.





# Outdoor Adventure

FOR GOD SO LOVED

# Spiritual Growth



**FILIAN**

FORMER STUDENT // TEEN

CHALLENGE



**1 in 4**

teens abuse **drugs or alcohol**.

**ADDICTION**

**1 in 5**

teens have been a victim of physical or sexual **violence**.

**TRAUMA**

**1 in 3**

teens have experienced **poor mental health** in the last 30 days.

**INSTABILITY**

**1 in 5**

teens have seriously considered attempting **suicide**. 1 in 10 will follow through.

**SEVERITY**

Centers for Disease Control and Prevention. Youth Risk Behavior Survey Data Summary & Trends Report: 2013–2023. U.S. Department of Health and Human Services; 2024.



# Early Interventions Can Help.

College Graduate

Married

Missionary with Chi  
Alpha Student  
Ministries

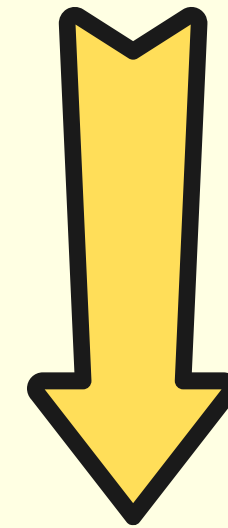
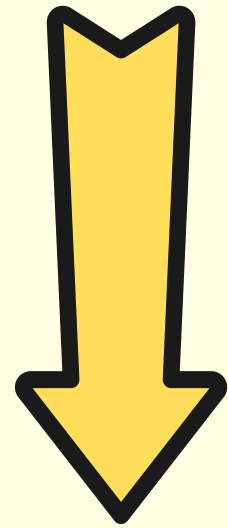


WITHOUT INTERVENTION, A TEEN STRUGGLING WITH A LIFE CONTROLLING ISSUE TODAY...

**Substance Abuse**

**Mental Health**

**Maladaptive Behaviors**



WILL BECOME A STATISTIC OF SYSTEMIC STRUGGLE TOMORROW



Poverty



Homelessness



Violence



Unemployment



Incarceration



# Substance Abuse

**Behavior and substance abuse are the MOST COMMON causes of juvenile detention.**

Often, there's a link between the two.

---

Northwestern Medicine. 1990-present. Randomized study of more than 1,800 juvenile offenders.

Early interventions can help.





# Mental Health

**There are more than 500k people living homeless in the US. One out of Five are due to mental health issues.**

For many, poor mental health is rooted in childhood trauma.

---

Department of Housing and Urban Development. Annual Count.

Early interventions can help.



# Maladaptive Behaviors

**While the overall high school dropout rate is declining, students with behavioral problems still struggle to finish school with up to a 50% drop out rate.**

---

University of Georgia. March 12, 2018. Two Behaviors Linked to High School Drop Out Rates. Science Daily.

Early interventions can help.



# There Need is Clear

At TCAR, we field **more than 10k calls annually** from families with a teen in crisis.



# Less than 1 in 10 struggling teens will get the help they need.



- ✓ Regulatory Changes for Mental Health Services
- ✓ Nationwide Trends & Misinformation
- ✓ Negative Media Promoting Fear/Stigma
- ✓ Cost of High-Quality, Effective Treatment Options



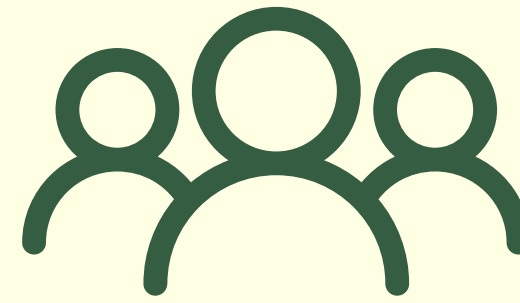
# Early Interventions Help Everyone



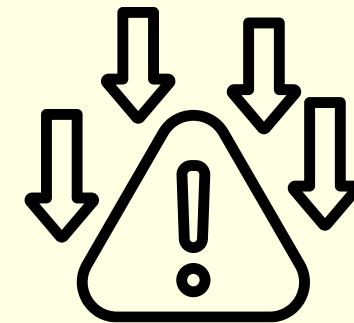
Fewer disciplinary issues in schools



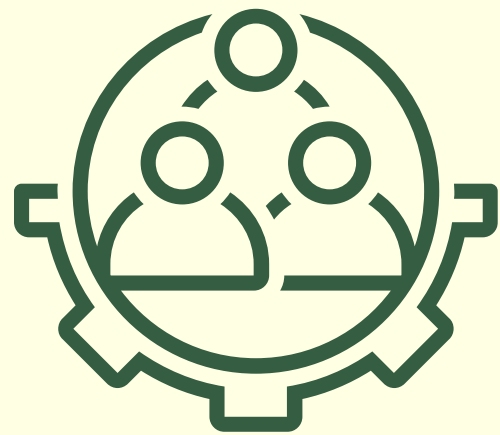
Less strain on juvenile justice systems



Stronger communities



Reduce stigma and fear



Greater workforce stability



Less Strain on Healthcare Systems



Less Crime, Safer Communities



# How You Can Help



Regulatory support for RTCs and Mental Health Providers

Support issues that increase access to quality programs & services





## Justin Smith

Executive Director

[Justins@teenchallengeranch.com](mailto:Justins@teenchallengeranch.com)



## Richie Swearingen

Clinical Director

[Richies@teenchallengeranch.com](mailto:Richies@teenchallengeranch.com)

