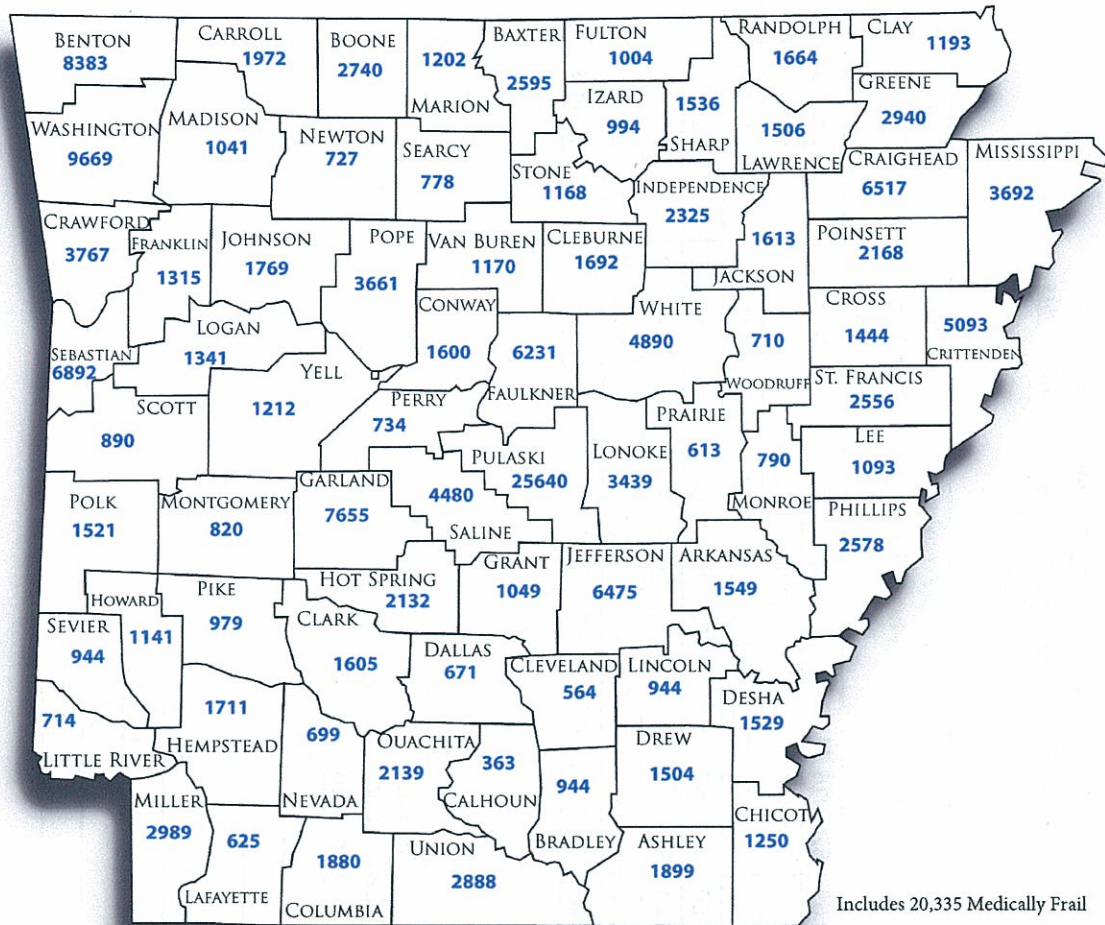


# Health Care Independence Program

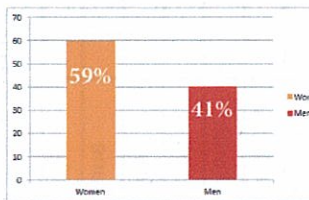
As of July 31, 2014

192,210 Eligibility Approvals

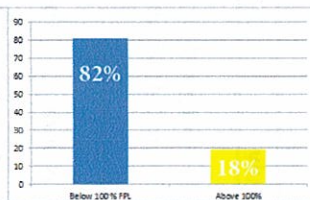


## Demographics

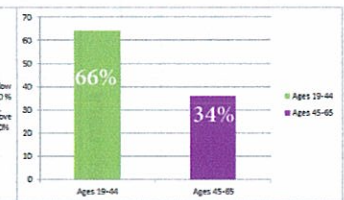
Gender



Federal Poverty Level



Age



**Arkansas Health Care Independence Program**  
**QHP Monthly Payments and Wraparound Costs**  
**July 31, 2014**

Enrollees	CSR	Premium	Total Premium Plus CSR Cost	Average		Total Average Cost Per Person
				Premium Per Person	CSR Per Person	
January	58,515	\$7,873,260.69	\$20,014,741.27	\$342.04	\$134.55	\$476.60
February	69,895	\$9,379,805.50	\$24,394,867.70	\$349.02	\$134.20	\$483.22
March	80,049	\$10,739,642.26	\$28,154,397.93	\$351.71	\$134.16	\$485.88
April	102,364	\$13,829,139.00	\$36,492,038.00	\$356.49	\$135.10	\$491.59
May	127,766	\$17,206,000.44	\$45,424,103.81	\$355.53	\$134.67	\$490.19
June	137,925	\$18,574,246.76	\$48,616,838.85	\$352.49	\$134.67	\$487.16
July	148,092	\$19,962,782.86	\$52,091,184.63	\$351.75	\$134.80	\$486.55

QHP = Qualified Health Plan  
 CSR = Cost Sharing Reduction

Month	Total Wraparound Costs	Average	
		Wraparound Costs Per Person	Average
January	\$202.35	\$0.00	\$0.00
February	\$360,942.69	\$5.16	\$5.16
March	\$433,126.56	\$5.41	\$5.41
April	\$457,189.44	\$4.47	\$4.47
May	\$581,048.10	\$4.55	\$4.55
June	\$727,107.37	\$5.27	\$5.27
July	\$707,722.82	\$4.78	\$4.78

Wraparound = Non-Emergency Medical Transportation (NEMT) and Early and Periodic Screening, Diagnosis, and Treatment (EPSDT) for 18 and 19 year old enrollees