



ABOUT US



OUR ARGUMENTS

MILL CREEK MOUNTAIN IS NOT SUITABLE FOR A BUILD OF THIS SCALE.

THERE ARE OTHER LOCATIONS FAR MORE SUITABLE THAT WOULD COST THE TAXPAYER A LOT LESS MONEY.

THE WAY OUR GOVERNMENT OVERLOOKED US DURING THIS PROCESS IS NOT OK. IF THEY WILL DO IT TO US, THEY WILL DO IT TO ANYONE.



SPECIFIC CRITERIA FOR A PRISON SITE

Site Selection Methodology

The primary search criteria were as follows:

- Minimum 250-300 contiguous acres, relatively flat and not in a floodplain.
- Not within 60 miles of an existing DOC facility (to avoid workforce cannibalization).
- Available regional workforce based on commute times.
- Availability of primary infrastructure (water, electric, feasibility of wastewater treatment, etc.).
- Proximity to emergency services and medical facilities.



THE LAND

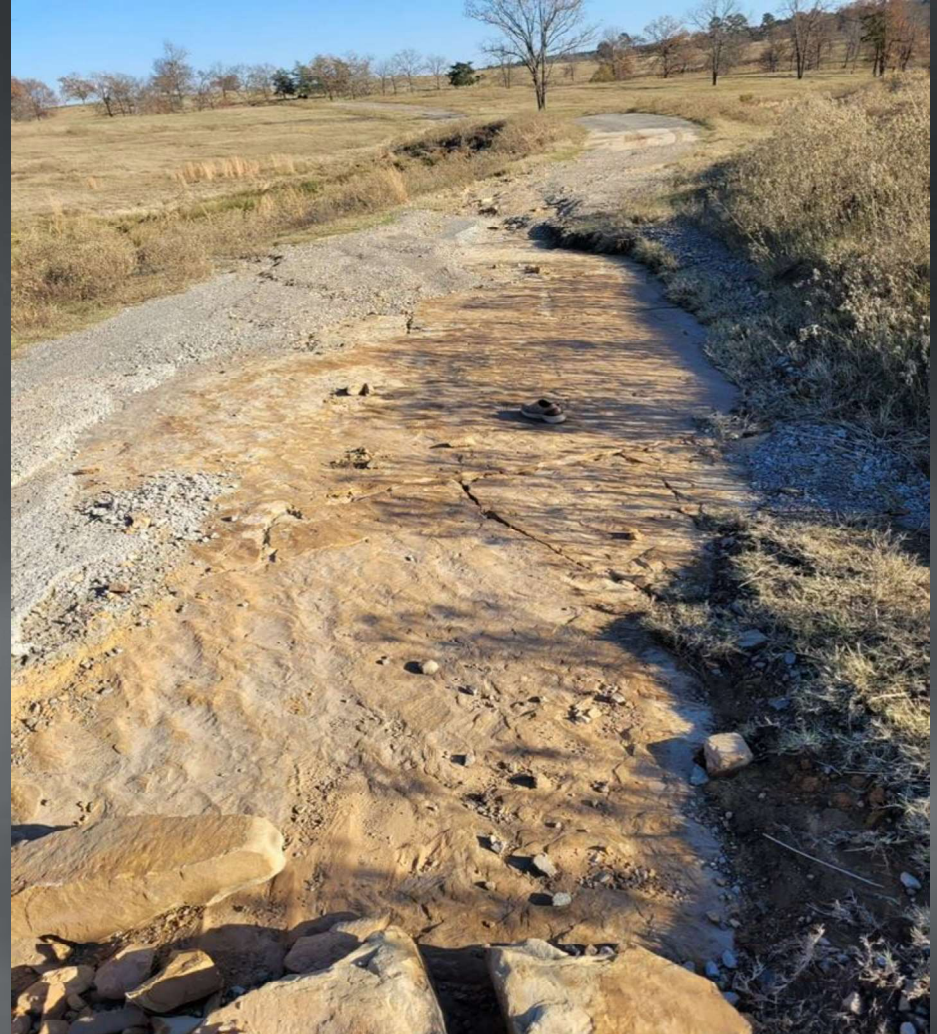


MILL CREEK MOUNTAIN IS **NOT** A
SUITABLE LOCATION FOR A BUILD
OF THIS SCALE!

THE LAND

ENVIRONMENTAL AND SITE SUITABILITY CONCERNS

- THE LAND IS CHARACTERIZED BY KARST TOPOGRAPHY, LEADING TO HIGH EXCAVATION COSTS AND POTENTIAL STRUCTURAL ISSUES.
- SENSITIVE ENVIRONMENTAL FACTORS, INCLUDING WATERSHED/WATER TABLE ISSUES AND ENDANGERED SPECIES, WHICH COULD COMPLICATE CONSTRUCTION AND INCREASE COSTS.
- THE LOCAL AQUIFER'S LIMITED CAPACITY, WHICH MAY NOT SUPPORT THE PRISON'S WATER NEEDS, ESPECIALLY DURING DROUGHT CONDITIONS.



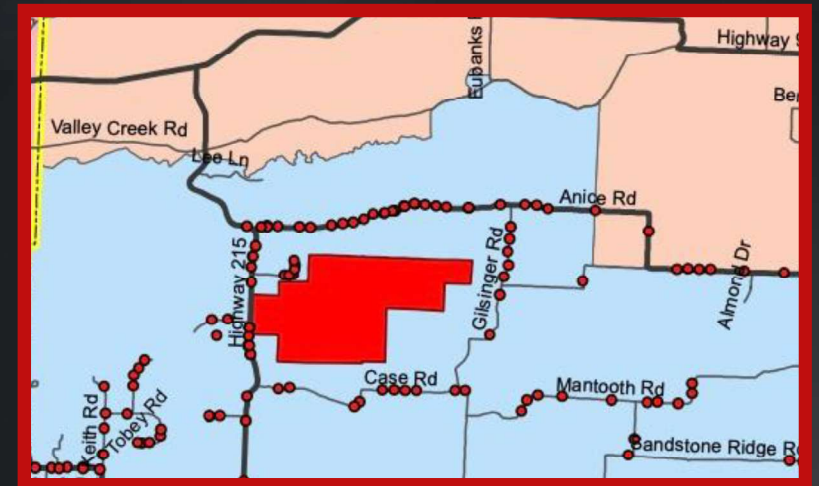
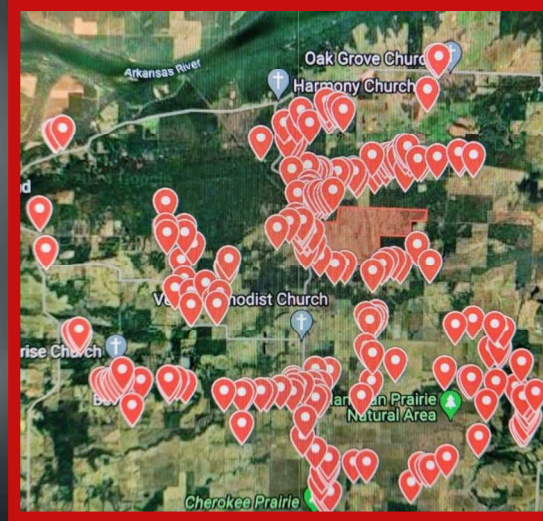
THE LAND

“We *informally* discussed with a soil & excavation *expert* about the site and he saw no *major* cause for concerns about site development” -

Arkansas Department of Corrections. (n.d.). Site assessment for proposed correctional facility. Retrieved November 30, 2024, from <https://doc.arkansas.gov/wp-content/uploads/DOC-Site-Assessment-1.pdf>

PROXIMITY TO PRIVATE LAND

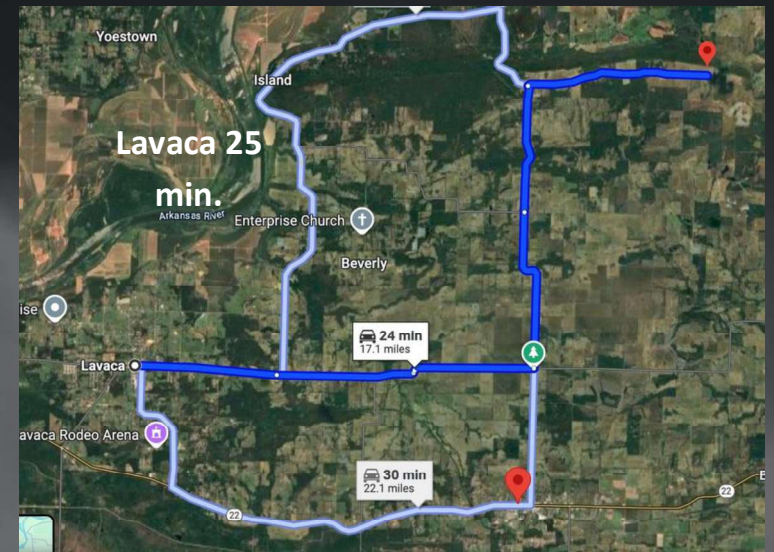
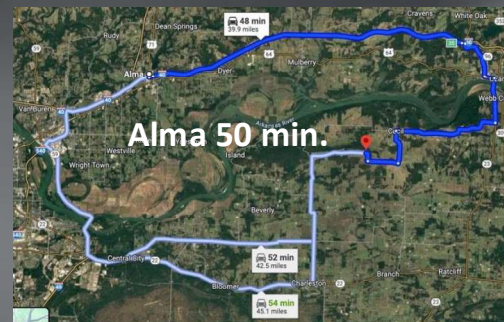
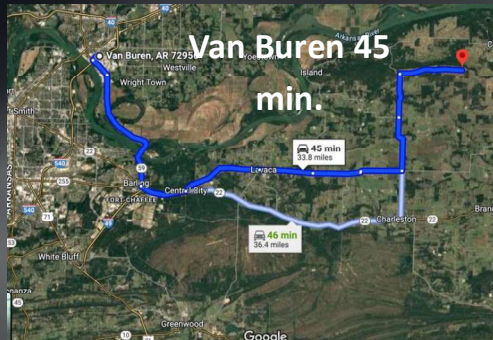
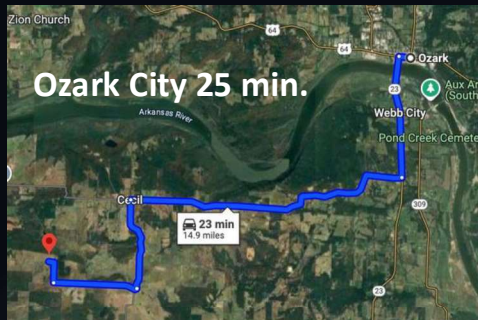
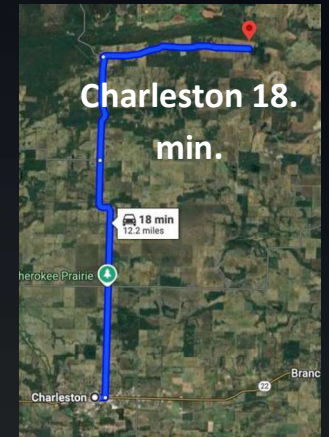
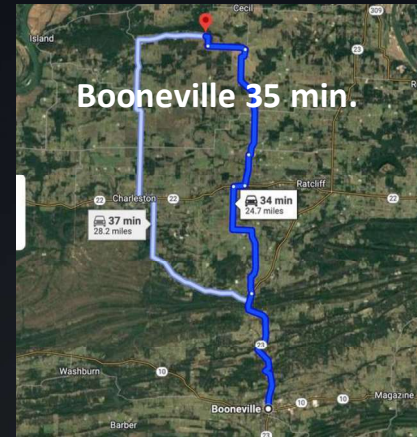
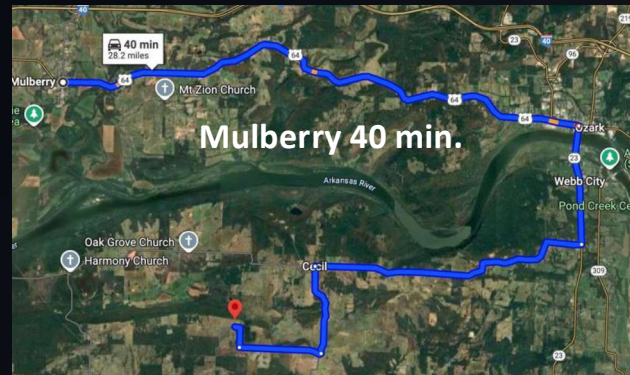
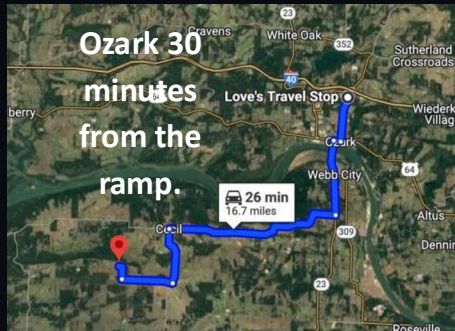
THIS VISUAL SHOWS LESS THAN HALF OF RESIDENTS (~600) LIVING WITHIN A FIVE MILE RADIUS OF THE PROPOSED PRISON. THIS IS NOT AN EXHAUSTIVE LIST. NONE OF THESE VOTERS WANT THIS PRISON NEAR THEIR HOMES, FOR MANY REASONS.



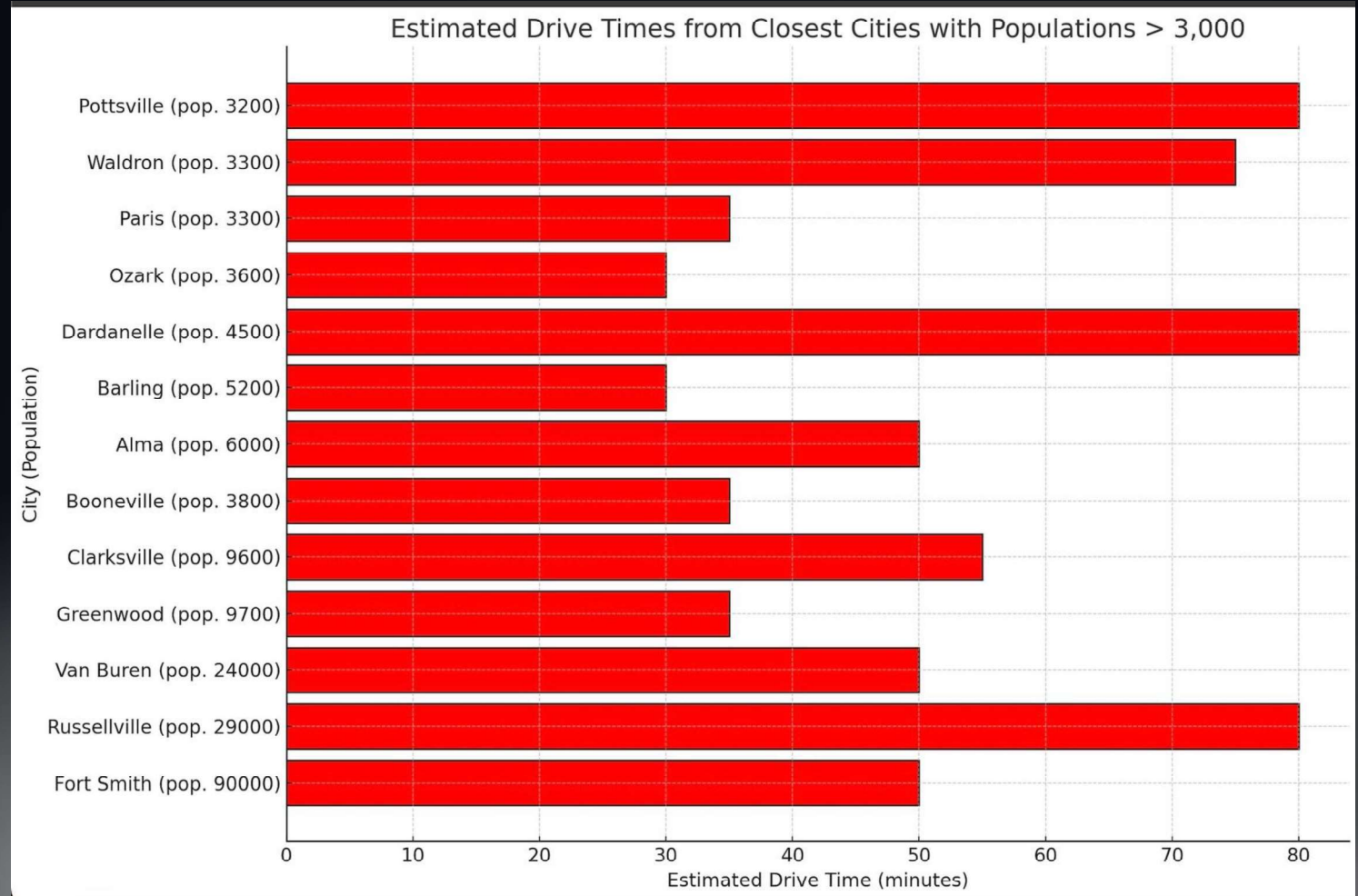
COMMUTE CONCERNS

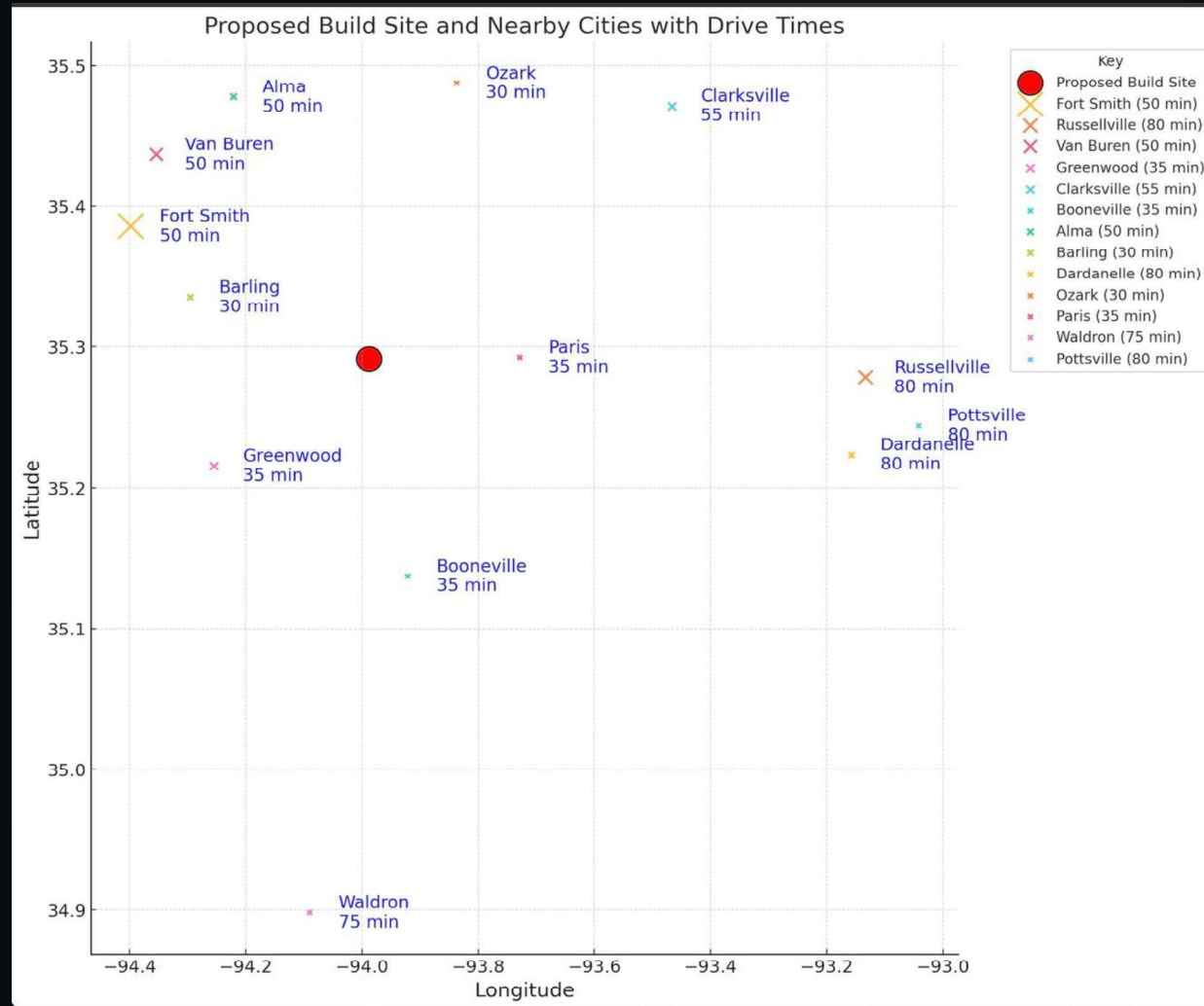


- MINIMUM 30-MINUTE COMMUTE
- POOR ROAD CONDITIONS AND LONG TRAVEL TIMES DETER POTENTIAL EMPLOYEES AND INCREASE VEHICLE WEAR AND TEAR.
- LONGER COMMUTES ARE A FACTOR IN HIGHER TURNOVER RATES IN AN ALREADY HARD TO FILL CAREER FIELD.



TOTAL POPULATION
FOR CITIES WITHIN
35 MIN DRIVE TIME
(REASONABLE
COMMUTE) = 30,800
THE CITIES WITH THE
LARGEST
POPULATIONS ARE
AN APPROX 50
MINUTE COMMUTE
(AT A MINIMUM)





<https://www.census.gov/content/dam/Census/library/publications/2021/acs/acs-47.pdf>

CITY POPULATION

BARLING 5,356

GREENWOOD 9,397

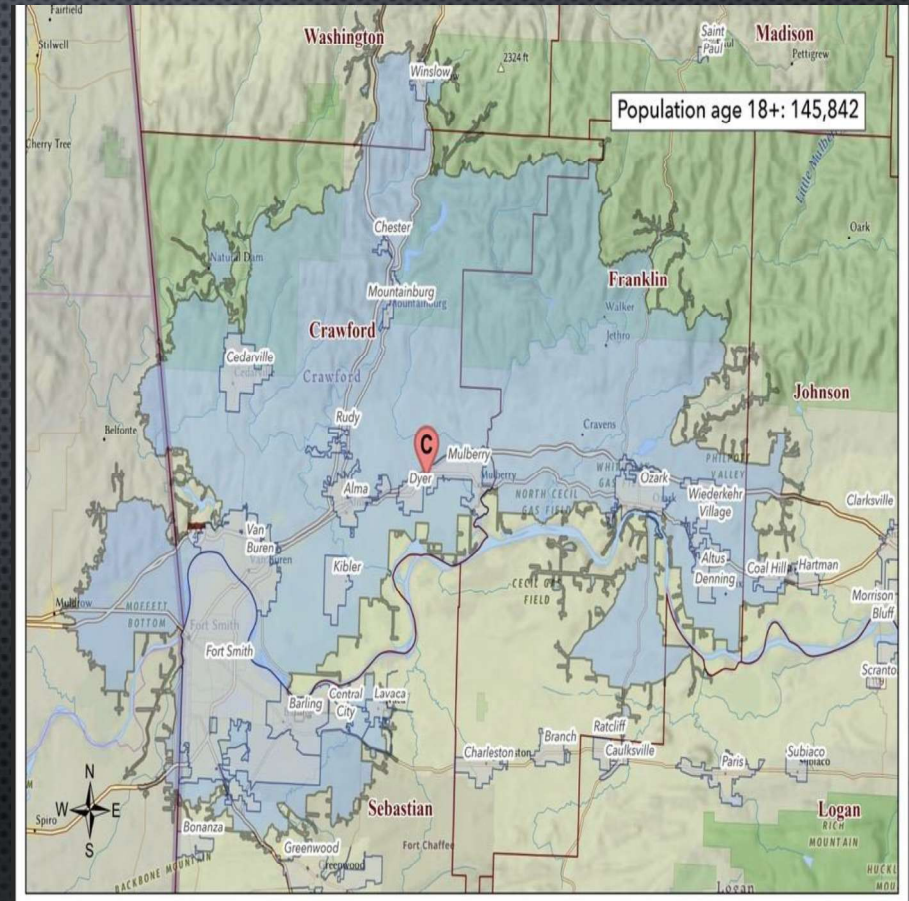
PARIS 3,407

OZARK 3,587

BOONEVILLE 3,825

TOTAL: 25,569

THE LABOR POOL WITHIN A 35-MINUTE
COMMUTE IS APPROXIMATELY **79.5%
SMALLER** COMPARED TO THE LABOR
POOL WITHIN A 50-MINUTE COMMUTE.
THIS SIGNIFICANT DIFFERENCE
HIGHLIGHTS THE IMPORTANCE OF
CHOOSING A LABOR POOL CLOSER TO
THE LARGER COMMUNITIES.



LABOR AND WORKFORCE CONCERNS



2.8% UNEMPLOYMENT RATE, AMONG THE LOWEST IN THE STATE, LIMITS THE LOCAL LABOR POOL, MAKING IT DIFFICULT TO STAFF THE FACILITY.

THE NORTHWEST ARKANSAS COUNCIL JUST RELEASED ITS WORKFORCE METRIC, BOASTING THAT 75.1% OF ITS WORKFORCE HAS A COMMUTE OF FEWER THAN THIRTY MINUTES.

THE REQUIRED INVESTMENTS BY LOCAL COMMUNITIES SHOULD BE STRATEGICALLY CENTRALIZED TO EQUITABLY DISTRIBUTE THE UNAVOIDABLE BURDEN TO TAXPAYERS.

STAFFING & BUDGET CONCERNS

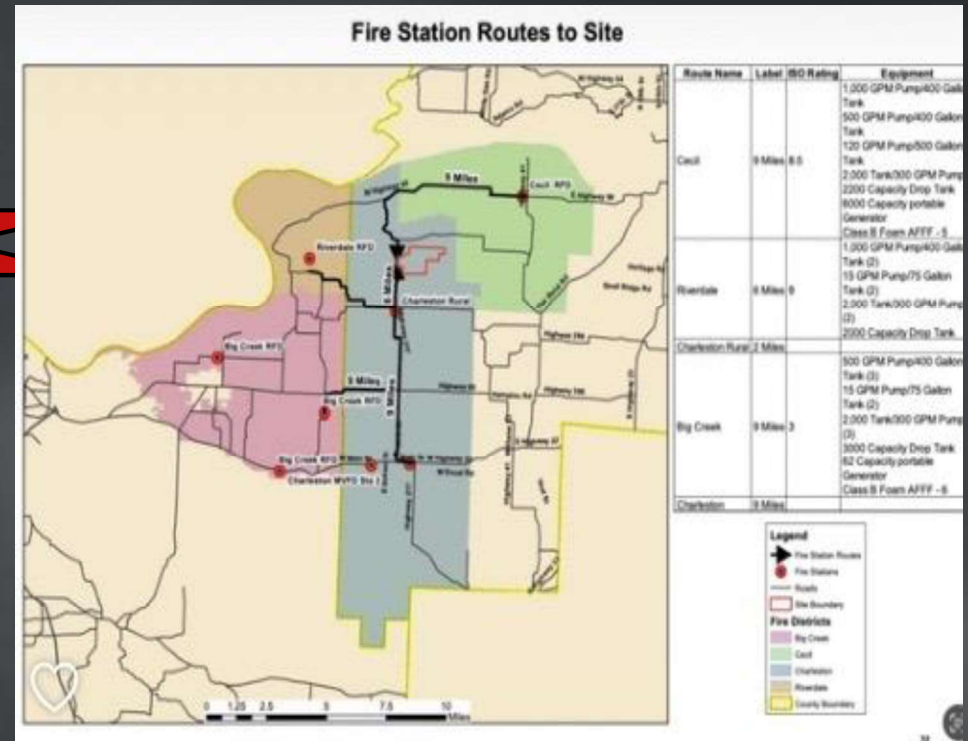
CURRENTLY, THE DOC HAS 950 VACANT POSITIONS FOR FRONT-LINE CORRECTIONS OFFICERS AND 120 OTHER VACANT STAFF POSITIONS AT STATE PRISONS AND COMMUNITY CORRECTIONS UNITS

- THIS 600K SQUARE FOOT FACILITY WITH 1,626 BEDS WAS COMPLETED IN 2021 AT A COST OF \$310MM
- THIS 257K SQ FT FACILITY WITH 832 BEDS WAS COMPLETED IN 2016 AT A COST OF \$165 MM

**THE PRISON IN FRANKLIN COUNTY WILL
COST A BILLION DOLLARS OR MORE.**



INFRASTRUCTURE LIMITATIONS



EXISTING INFRASTRUCTURE FOR EMERGENCY SUPPORT
NEAR MILL CREEK MOUNTAIN.

THE COMMUNITY



**FRANKLIN COUNTY
DOES NOT WANT THIS
PRISON**

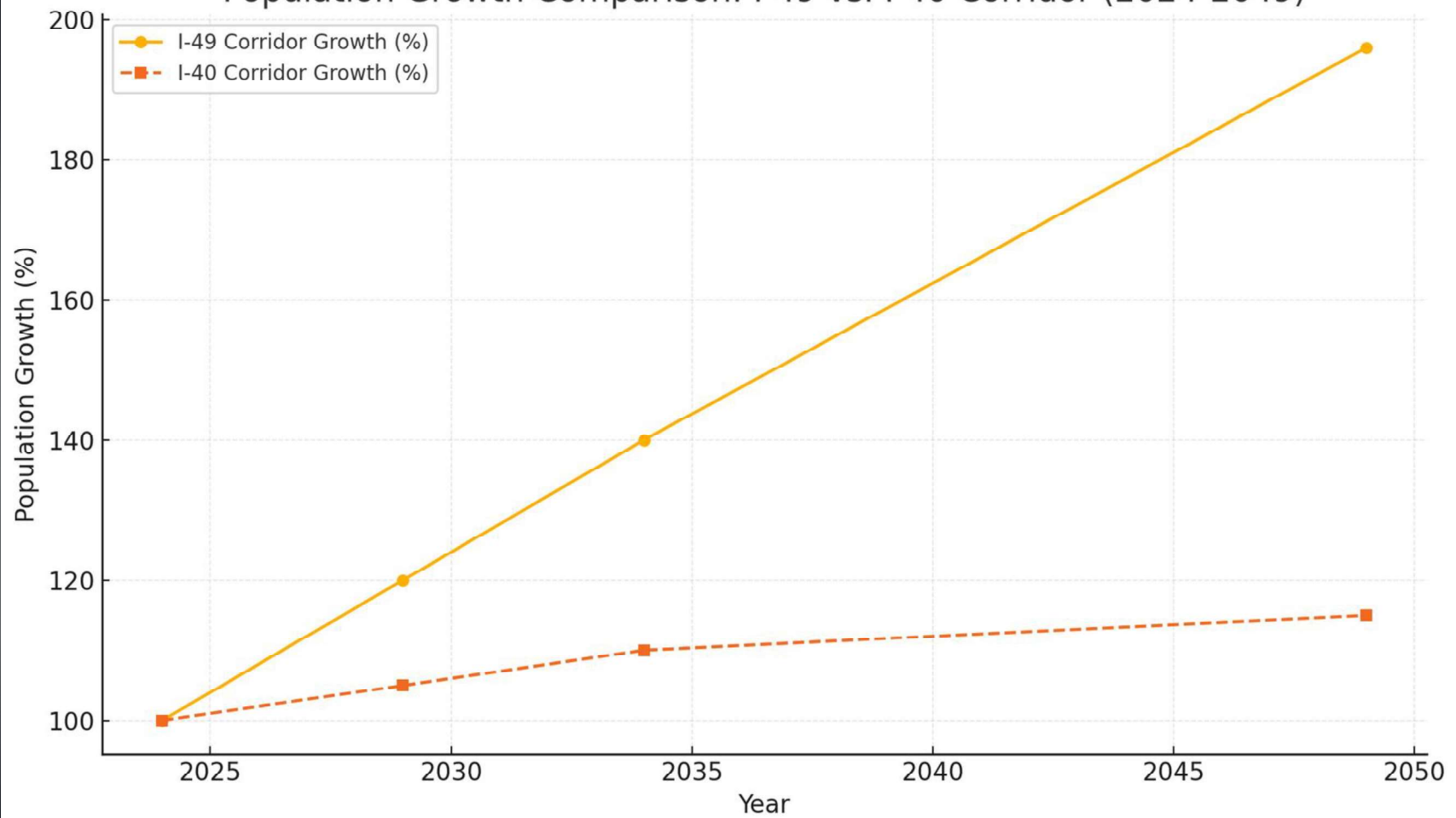


SOLUTIONS

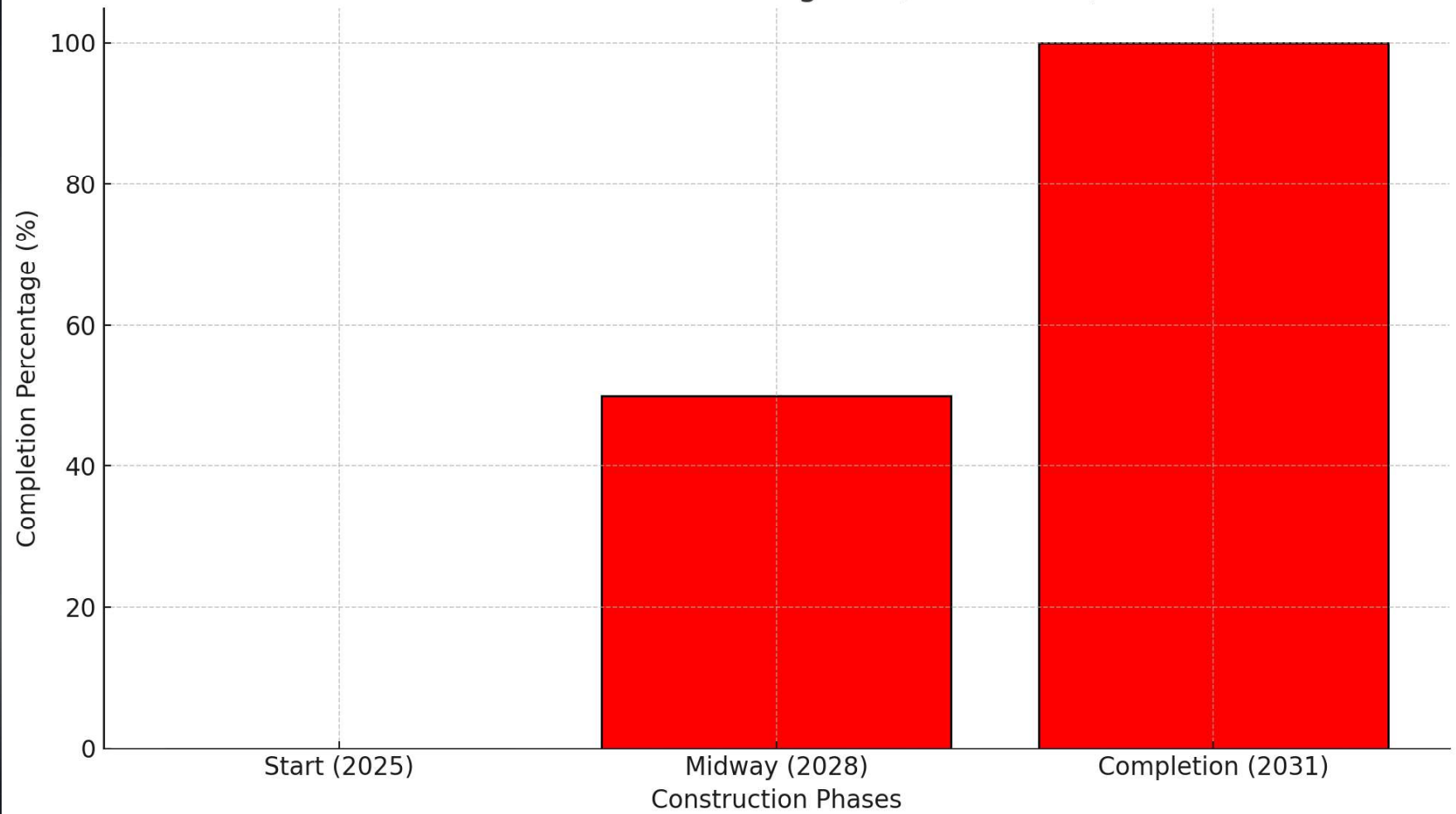
RELOCATING THE SITE TO A MORE PRACTICAL, CENTRALLY LOCATED AREA WITH EXISTING EMERGENCY SERVICES AND IMPROVED COMMUTER ACCESS WOULD SIGNIFICANTLY REDUCE THE STATE'S OVERALL BUDGETARY OBLIGATIONS COMPARED TO THE CURRENT SITE.

ADDITIONALLY, IT WOULD ENABLE FUTURE INVESTMENTS TO BE DISTRIBUTED MORE EQUITABLY AMONG THE AFFECTED SCHOOL DISTRICTS AND COMMUNITIES, PREVENTING ANY ONE LOCATION FROM SHOULDERING A DISPROPORTIONATE SHARE OF THE BURDEN.

Population Growth Comparison: I-49 vs. I-40 Corridor (2024-2049)



I-49 Construction Progress (2025-2031)



OUR TAX DOLLARS SHOULD WORK FOR US

REDIRECTING THE NEARLY \$3 MILLION ALREADY INVESTED IN THE VESTA PROPERTY TOWARD A MORE SUITABLE PROJECT OR SELLING IT BACK TO AN ENTITY OR PRIVATE LANDOWNERS WOULD REPRESENT A MORE RESPONSIBLE USE OF TAXPAYER DOLLARS.

FROM OUR PERSPECTIVE, ALL OPTIONS SHOULD REMAIN ON THE TABLE. IF THE STATE INSISTS ON PURSUING LARGE-SCALE ECONOMIC DEVELOPMENT, THE BENEFITS AND BURDENS SHOULD BE EQUITABLY SHARED AMONG ALL AFFECTED COMMUNITIES.

OUR TAX DOLLARS SHOULD WORK FOR US

COMPARISON SITE:

A RETAIL DEVELOPMENT IN NORTHWEST ARKANSAS WITH SIMILAR SOIL COMPOSITION, BEDROCK CHALLENGES, AND TOPOGRAPHY SERVES AS A REFERENCE POINT.

UNDERCUT AND BUILD-UP METHOD: EXCAVATION AND FILL WERE USED INSTEAD OF BLASTING TO MANAGE COSTS. DIRT VOLUME MOVED: 300,000 CUBIC YARDS TOTAL, 100,000 CUBIC YARDS REMOVED ONSITE AND 200,000 CUBIC YARDS BROUGHT IN.

UPON ENCOUNTERING LARGE SCALE ROCK COMPOSITION, ONSITE DIRT REMOVAL INCREASES TO A COST OF \$225 PER CUBIC YARD ON AVERAGE IN THIS REGION.



COST BREAKDOWN:

ONSITE REMOVAL: ~\$18 PER CUBIC YARD.

IMPORTED FILL: ~\$6 PER CUBIC YARD.

TOTAL COST FOR 15-ACRE SITE: DIRT WORK
ALONE COSTS OVER \$3 MILLION.

PROJECTED COST FOR PRISON SITE: IF 60% OF
THE PRISON SITE REQUIRES SIMILAR
PREPARATION, DIRT WORK COSTS ARE
ESTIMATED TO EXCEED \$100 MILLION. AT
\$225/CU YD, THIS ESTIMATE COULD EASILY
INCREASE ANOTHER \$45 MILLION.



LACK OF GOVERNMENT TRANSPARENCY



Original artwork by Kasten Searles

FALSE ASSURANCES: DURING SUBCOMMITTEE HEARINGS, STATE OFFICIALS CLAIMED NO SITE HAD BEEN SELECTED, DESPITE THE LOCATION BEING UNDER CONTRACT AT THE TIME.

DISMISSAL OF CONCERNS: RESIDENTS WERE TOLD THEY WOULD “LEARN TO LIKE IT,” DISREGARDING LEGITIMATE OBJECTIONS AND LOCAL OPPOSITION.

OPAQUE BUDGETING: NO DETAILED BREAKDOWN OF THE \$470 MILLION PROJECT ESTIMATE WAS PROVIDED, RAISING CONCERNS ABOUT FISCAL RESPONSIBILITY.

UNADDRESSED INFRASTRUCTURE AND WORKFORCE ISSUES: KEY LOGISTICAL AND ECONOMIC CHALLENGES WERE NOT OPENLY DISCUSSED OR EVALUATED WITH STAKEHOLDERS.

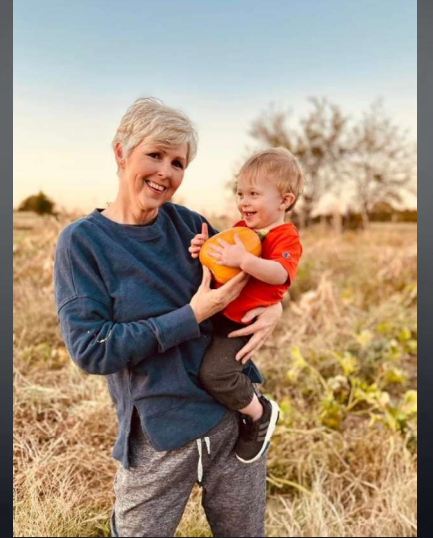
A WAY OF LIFE WILL BE FOREVER CHANGED

SOME THINGS ARE WORTH FIGHTING FOR, AND MILL CREEK MOUNTAIN, ALONG WITH THE COMMUNITIES THAT SURROUND IT, ARE CERTAINLY AMONG THOSE THINGS. FOR THOSE OF US WHO CALL THIS PLACE HOME, IT REPRESENTS MORE THAN LAND. IT'S OUR HISTORY, OUR HERITAGE, AND OUR WAY OF LIFE. WE KNOW OUR PLEA MAY SEEM SMALL COMPARED TO THE PRIORITIES OF THE STATE, BUT WE ASK YOU TO PAUSE FOR JUST A MOMENT. PICTURE THE THINGS IN YOUR LIFE THAT YOU HOLD MOST SACRED, THE PARTS OF YOUR WORLD THAT GIVE IT MEANING, BEING TRANSFORMED INTO SOMETHING YOU NEITHER CHOSE NOR WANTED, AND HAVING NO VOICE IN THE DECISION. JUST FOR A MOMENT, WE ASK YOU TO SEE THIS THROUGH OUR EYES.











REMEMBER THE FACTS

THE PROPOSED PRISON IN FRANKLIN COUNTY AFFECTS ALL ARKANSANS

- THIS PRISON IS ALREADY OVER BUDGET.
- IT WILL CREATE A SUBSTANTIAL COST TO TAXPAYERS ACROSS THE STATE
- THERE ARE MORE SUITABLE LOCATIONS FOR A PROJECT THIS SIZE
- **MILL CREEK MOUNTAIN IS NOT A SUITABLE LOCATION**

BASED ON COSTS FOR SIMILAR BUILD SITES IN OTHER PARTS OF ARKANSAS, THE DIRT WORK ALONE WILL COST **\$100,000,000**

YES, THIS IS ONE HUNDRED MILLION DOLLARS JUST FOR THE DIRT WORK.

- WELL WATER SUPPLY IS AT RISK OF CONTAMINATION OR DEPLETION FROM EXPLOSIVE ACTIVITY DURING PRISON CONSTRUCTION.
- WE NEED TO PROTECT UNDERGROUND WATER SOURCES FOR SUSTAINABILITY.
- WE *MUST* SAFEGUARD OUR WATER RESOURCES TO SUPPORT AGRICULTURE, MANUFACTURING, HOUSING, AND INFRASTRUCTURE DEVELOPMENT.

THERE ARE PROPERTIES ALREADY OWNED BY THE STATE ON LAND THAT IS FAR MORE COST-EFFECTIVE AND SUITABLE FOR A LARGE-SCALE INDUSTRIAL BUILD IN AREAS WITH FAR BETTER INFRASTRUCTURE FOR THE BUILDING AND WORKFORCE NEEDS OF THE RIVER VALLEY

BASED ON INFORMATION OBTAINED
FROM OUR FOIA REQUESTS, WE
ESTIMATE THIS PRISON TO BE BUILT
IN 3 PHASES WITH EACH PHASE
COSTING UP TO 500 MILLION
DOLLARS. THAT WOULD BE A TOTAL
COST TO THE TAXPAYER OF **~1.5
BILLION DOLLARS**

You want us at the next mtg?

Not sure yet but Mike was here.
Thanks

Delivered

I saw that. We have some work to do.
Let's start developing the message
now about phasing to meet budget
and staff concerns. We need to
develop the message so we can
control it and protect the governor and
BOC.



THANK YOU

“The Constitution means that each one of us counts.” *Dale Bumpers*



Website