

Organizational Structure & Programs

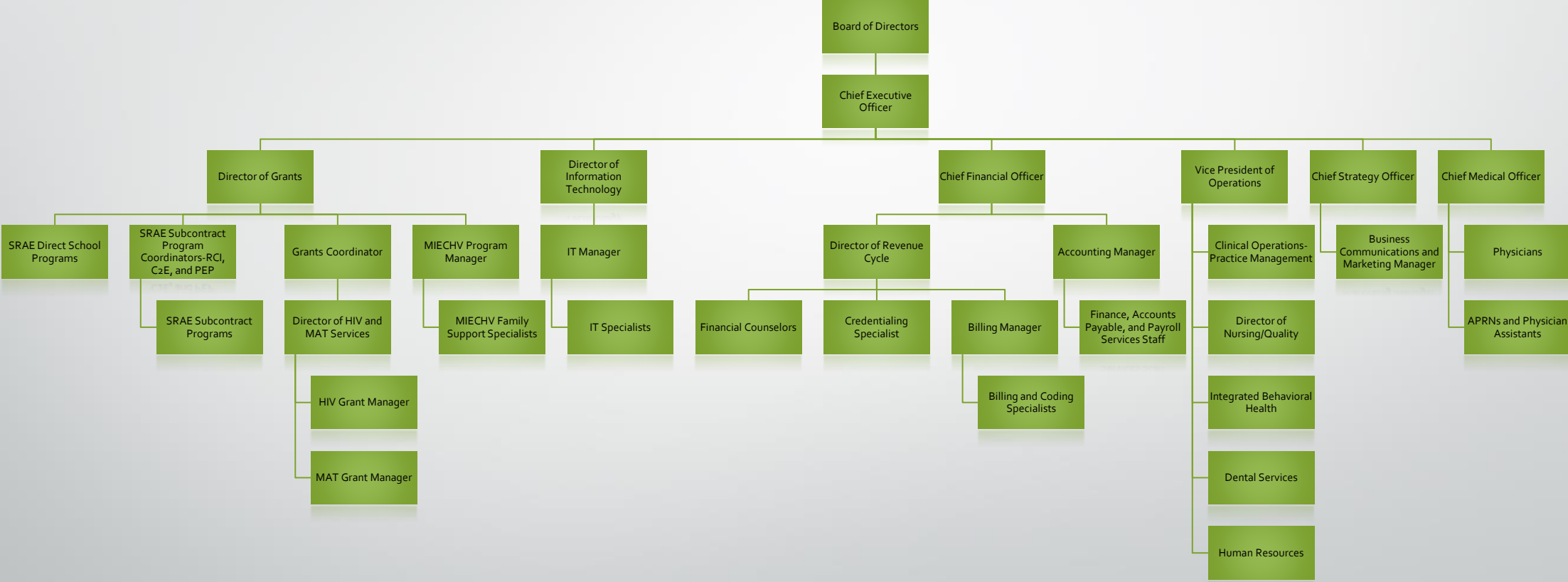
Healthy Connections, Inc. (HCI)

Reality Check, Inc. (RCI)

Choosing To Excel (CTE)

Prevention Education Programs, Inc. (PEP)

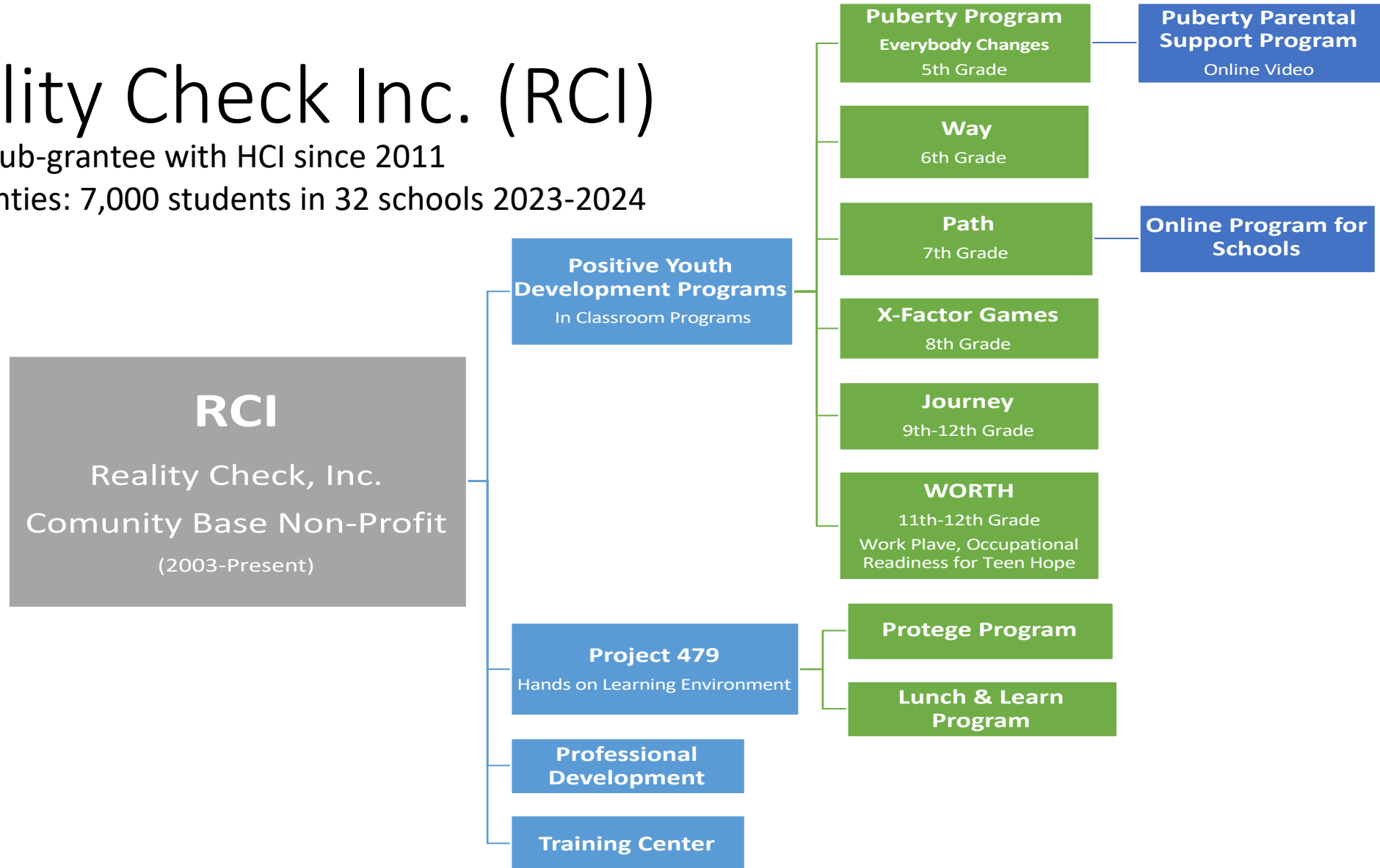
Healthy Connections, Inc.



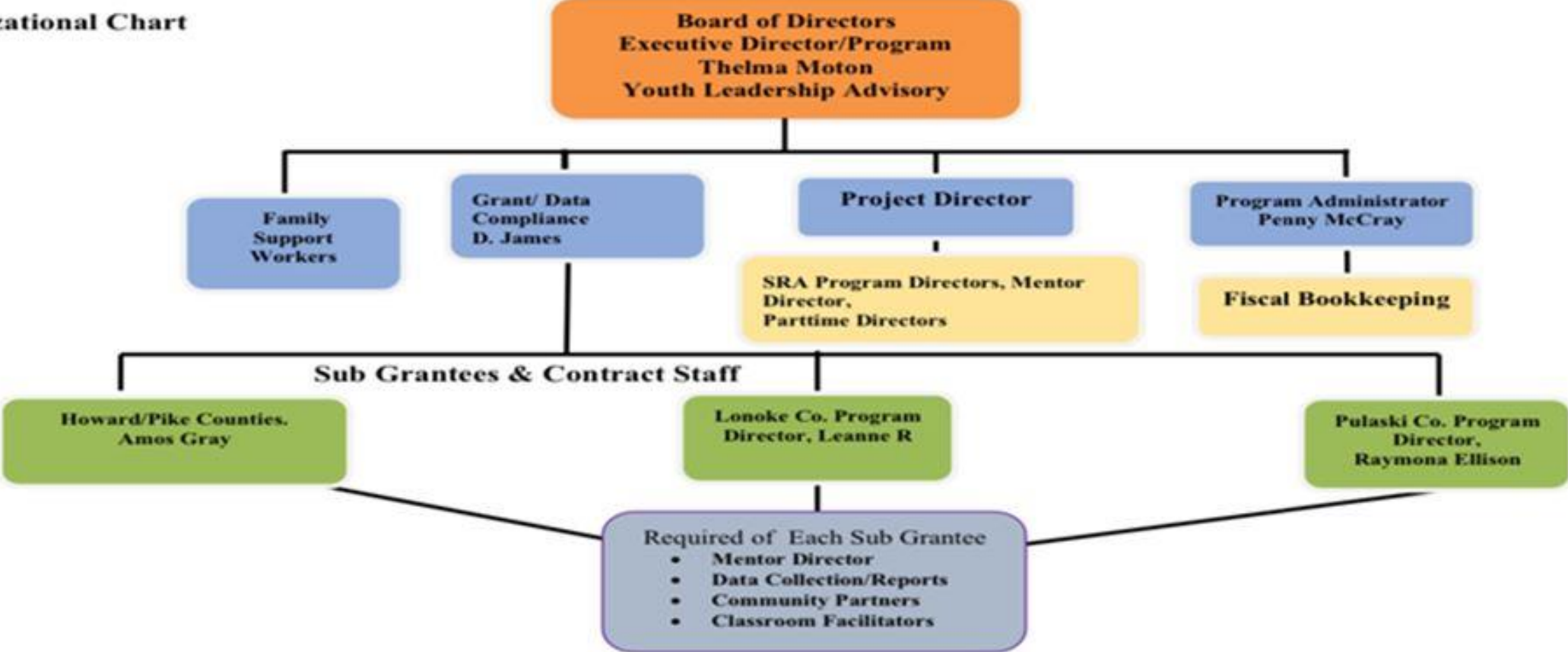
Reality Check Inc. (RCI)

Worked as a sub-grantee with HCI since 2011

Serving 7 counties: 7,000 students in 32 schools 2023-2024



Organizational Chart



Prevention Education Programs (PEP)



Prevention Education Programs Inc. Youth Empowered to Succeed (Y.E.S.) Program

Mission: To build a community of well-informed youth who are empowered to make healthy choices.

Y.E.S. provides Sexual Risk Avoidance and Healthy Relationship Education Programs through classroom settings in 4 rural counties (Arkansas, Prairie, Monroe, & Poinsett) serving 11 schools in 5 districts, one of which is the Harrisburg Juvenile Treatment Center (Rite of Passage), a year-round accredited high school and career and technical education program for adjudicated females (done in the summer).

6th grade *Choosing the Best Way* with additional *Choosing the Best* Reproductive & Sexual Health and a Parent Information Program
→ 8 total classroom hours ranging from 1-7 class periods depending on school.
→ Males and females split for puberty/anatomy and pregnancy lessons.
→ Locations/Approximate # students served in the district: Des Arc (45), Hazen (35), Stuttgart (95)
✓ Approximately 175 students

7th grade *Choosing the Best Path* (in schools the 6th grade program isn't done in, we also include *Choosing the Best* Reproductive & Sexual Health and a Parent Information Program)
→ 8-9 total classroom hours ranging from 1-7 class periods depending on school.
→ Males and females split for puberty, anatomy, and pregnancy lessons.
→ Locations/Approximate # students served in the district: Clarendon (25), Des Arc (45), DeWitt (90), Hazen (40), Stuttgart (120)
✓ Approximately 320 students

8th grade *Choosing the Best Life*
→ 8-9 total classroom hours ranging from 1-7 class periods depending on school.
→ Locations/Approximate # students served in the district: Clarendon (25), Des Arc (45), DeWitt (90), Hazen (40), Stuttgart (120)
✓ Approximately 320 students

9th-12th grade (through required health class) *Choosing the Best Journey* with use of Real Care Infant Simulators for weekend simulation of being a teen parent.
→ 14-15 total classroom hours ranging from 1-7 class periods depending on school, plus approximately 60 hours of simulation with Real Care Infant simulator over a weekend.
→ Locations/Approximate # students served in the district: Clarendon (25), Des Arc (45), DeWitt (90), Hazen (40), Stuttgart (120), Rite of Passage Juvenile Treatment Facility (25)
✓ Approximately 345 students

11th or 12th grade *Choosing the Best Relationship*
→ 8-9 total classroom hours ranging from 1-7 class periods depending on school.
→ Locations/Approximate # students served in the district: Des Arc (30), Hazen (30), Stuttgart (110)
✓ Approximately 170 students

Program Effectiveness

*Teen births in Arkansas, as well as across the United States, have been declining since the early 1990s.

Evidence suggests that this decline stems from teens being less sexually active and becoming more effective users of contraception.

Arkansas has one of the highest rates of teen births:

- 76% of teen births occur to teenage women ages 18-19, while 24% occur to females ages 15-17 with only 1% under age 15.

“The teen birth rate is defined as births per 1,000 in the United States is 14 per 1,000.” “The teen birth rate in Arkansas has fallen from 51 to 25 per 1000 over the past decade- a 45% decrease, consistent with the 50% decline in the national birth rate from 2011-2022.

PEP: Organization 1: Eastern Arkansas

County	2003	2020	decrease %
Arkansas	55.5	47.5	14.5%
Monroe	63.2	55.2	12.6%
Prairie	41.9	34.1	18.6%

HCI Organization 2: Western Arkansas

County	2003	2020	Decrease %
Polk	73.1	35.7	51.1%

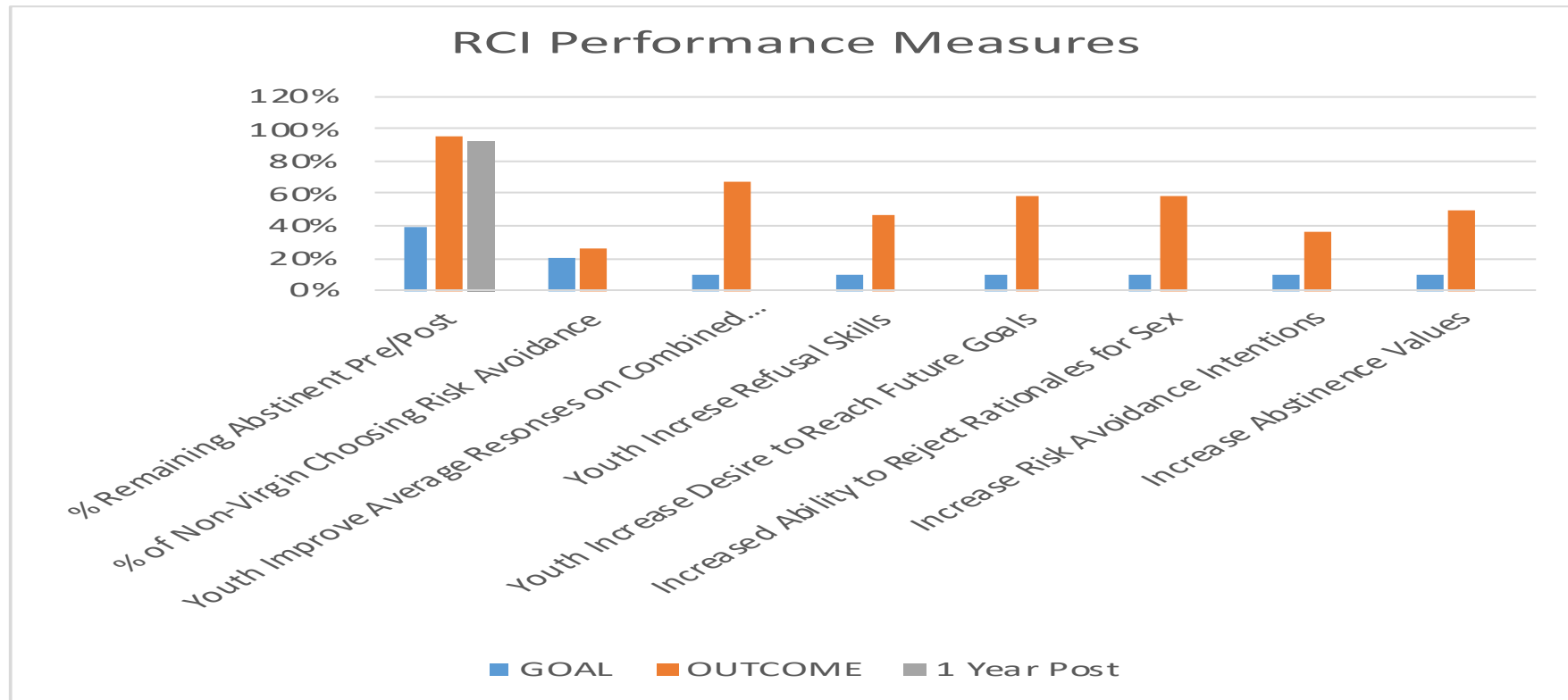
CTE Organization 3: Central Arkansas

County	2003	2020	Decrease %
Faulkner	34.2	16.9	50.5%
White	48.9	24.1	50.7%
Pulaski	61.6	27.3	55.6%
Lonoke	50.65	20.9	58.7%

RCI Organization 4: Northwest and River Valley

County	2003	2020	Decrease %
Johnson	81.8	26.0	68.2%
Benton	65.4	19.4	70%
Washington	52.8	21.3	59.6%
Carroll	71.8	35.9	50%
Crawford	62.3	28.0	55%
Logan	60.6	21	65.3%
Franklin	54	28.5	47.2%

RCI End-of-Year
Performance Progress Report
Performance Measures SF-PPR-A
Work Plan Outcomes (2009-2010)
Institute for Research and Evaluation

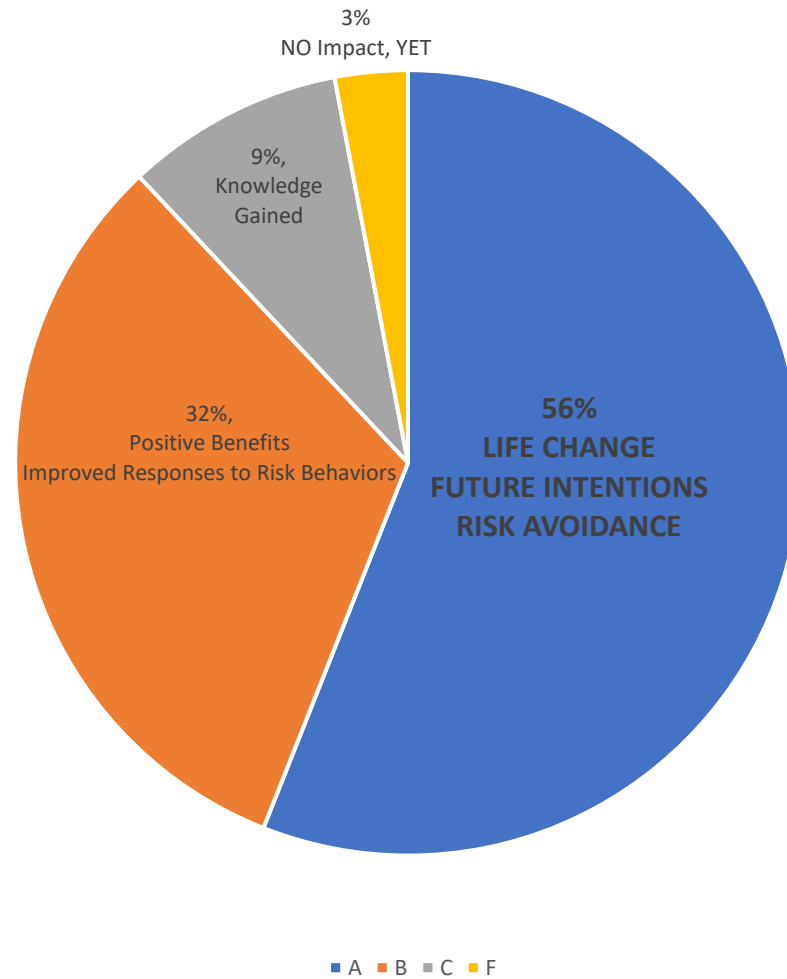


Reality Check's Report

GRADES	NATIONAL RATES	STATE RATES	REALITY CHECK RATES
7	Not available	19%	3%-5%
8	Not available	29%	11%-15%
9	32%	43%	22%
10	41%	50%	38%
11	53%	60%	38%
12	62%	65%	41%

*2010 Search Institute and YRBS data

2023-2024
Student Post Comments
4,165 Student Impact Cards



RCI Counties	Total # of Middle-High Schools	RCI Schools Served	RCI Current Schools Served	Total # of students in 7 counties	Total # Served in 2023-2024
7	153	51	32	36,351	6,929

State rate of teen births	# per state statistics per 7 counties-w/out RCI programs	Cost to state @ \$19,000 per	Using RCI average of 50-60% decrease in teen births applied across 7 counties	YEARLY STATE SAVINGS by using RCI across the 7 counties:
24.6 per 1000	894 teen births	\$16,986,000	186 teen births	\$13,452,000

- This is a conservative estimation of savings based on one (1) organization out of the four (4) that are equally effective in providing Positive Youth Development Programs.
- This shows the potential yearly savings to the state in only one area (Teen Pregnancies and Births) that PYDC has dramatic effects.
- The CDC states that for every 1 teen girl who becomes pregnant, 4 will be infected with a sexually transmitted infection/disease, which can have a dramatic effect on their future fertility.
- What is it costing the state for medical care for newly infected youth with STI's?
- PYDC as a Collaborative has documented effectiveness not just in the reduction of teen pregnancies and STI's but also creating savings to the state in the following areas:
 - Mental health
 - Addictive behaviors such as alcohol, drugs, vaping, etc.
 - Juvenile delinquency
 - Failure to Thrive Educationally
 - The savings to the state in these areas are incalculable at this time.

STATE WIDE GROWTH PLAN



