



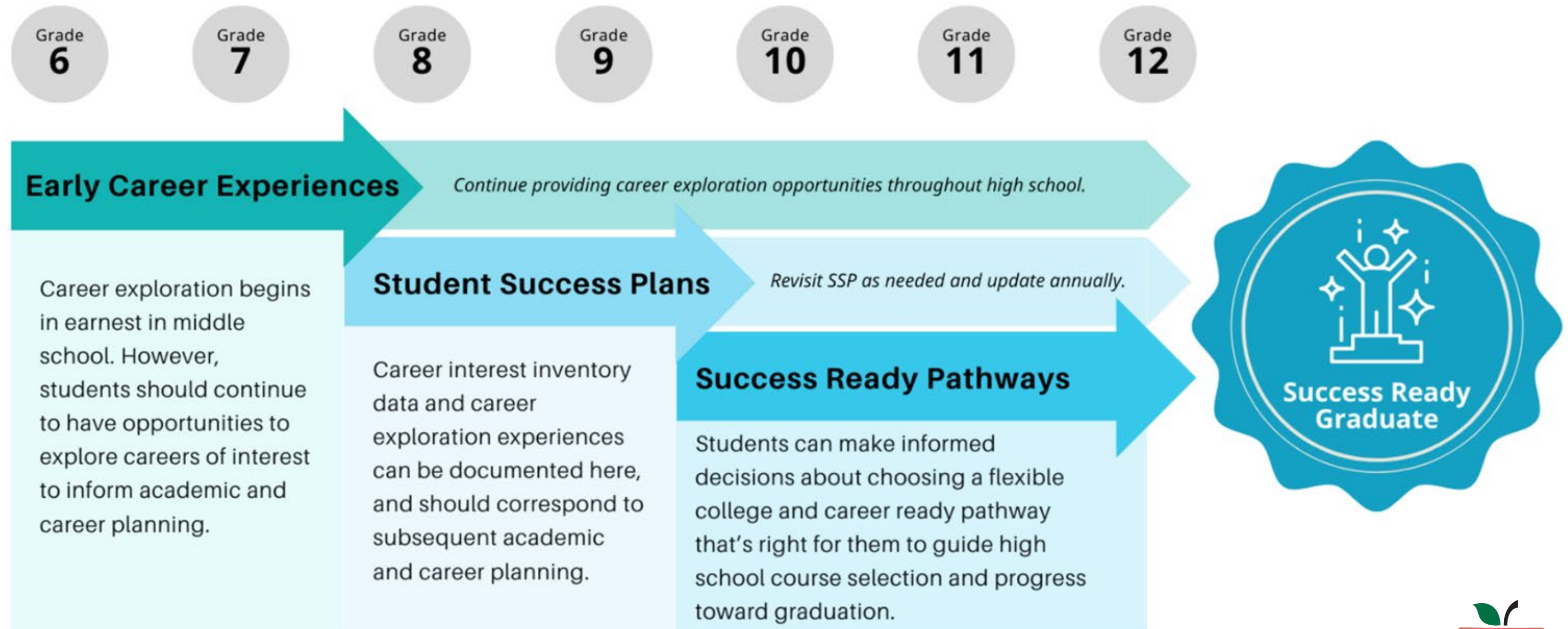
Arkansas ACCESS: Success-Ready Graduates and Funding to Support Higher Education Workforce Training



Together, the Arkansas LEARNS and ACCESS Acts modernize education to ensure students are success-ready and aligned with workforce needs —opening pathways to prosperity for every Arkansan.



Vision of a Success Ready AR Graduate



Success - Ready Graduates

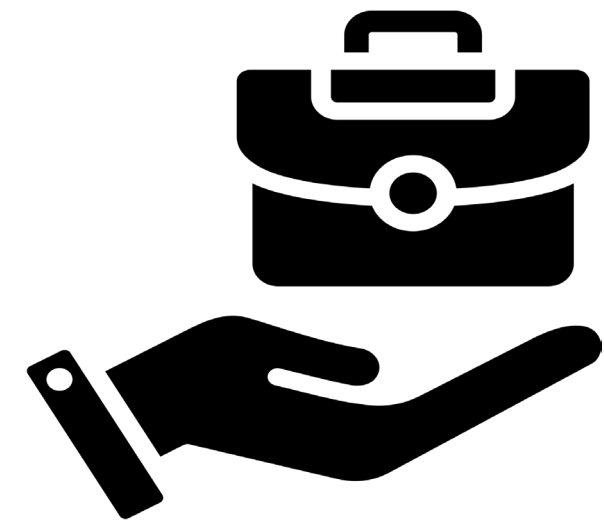
Enlistment



Enrollment



Employment



Success - Ready Pathways

- Accounting
- Advanced Manufacturing
- Advanced Placement (AP) [Scholar, Scholar w/ Honor, Scholar w/ Distinction, or Capstone Diploma]
- Agriculture Power, Structural & Technical Systems
- Animal Systems
- *Arkansas Military Service and Security*
- Automotive Service Technology
- Banking
- Business Finance
- Cambridge AICE
- *Computer Science* [Data Analytics & Machine Learning, Information Technology & Security, Software Development]
- Concurrent Credit
- Construction
- Criminal Justice
- International Baccalaureate (IB)
- *JROTC*
- Management
- *Medium/Heavy Truck Technology*
- Nursing Services
- Plant Systems
- Pre-Educator
- Pre-Engineering
- Retail Management
- *Supply Chain and Logistics*
- Welding
- World Language



Merit

1. Complete a Success - Ready Pathway with 3 sequential credits
2. Demonstrate Readiness via one of the following:
 - Identified High Wage, High Demand Industry-Recognized Credential
 - *12 or more postsecondary credits*
 - Arkansas Certified Pre-Apprenticeship leading to a Registered Apprenticeship
 - AP Scholar Designation¹
 - AP Scholar with Honor Designation²
 - *ASVAB Score of 51 and completion of approved Enlistment Pathway*
 - Cambridge Scholar³
 - IB Career-related Programme Certificate⁴
 - IB Scholar⁵
 - Seal of Biliteracy

¹ Granted to students who receive scores of 3 or higher on three or more AP Exams.

² Granted to students who receive an average score of at least 3.25 on all AP Exams taken, and scores of 3 or higher on four or more of these exams.

³ Granted to students who earn qualifying scores of "E" or higher on at least three Cambridge Advanced course assessments.

⁴ Granted to students who complete a minimum of 2 IB classes, up to 5 IB classes, AND complete the four elements of the IB CP Core components.

⁵ Granted to students who earn qualifying scores of 4 or higher on at least three IB course assessments.



Distinction

1. Complete Success - Ready Pathway with 3 sequential credits
2. Demonstrate Readiness via one of the following:
 - Technical Certificate or higher (e.g., Associate's Degree)
 - Cambridge Advanced International Certificate of Education (AICE) Diploma⁶
 - International Baccalaureate (IB) Diploma⁷
 - AP Scholar with Distinction Designation⁸
 - AP Capstone Diploma Designation⁹
 - *Currently Enlisted in the Armed Forces with qualifying ASVAB Score*
 - Youth Apprenticeship leading to a Registered Apprenticeship

6 Candidate must earn seven full credits from at least three subject groups through courses and exams taken over a 25-month period.

7 Candidate must take and complete the assessment components for six subjects AND the three core elements of the IB DP.

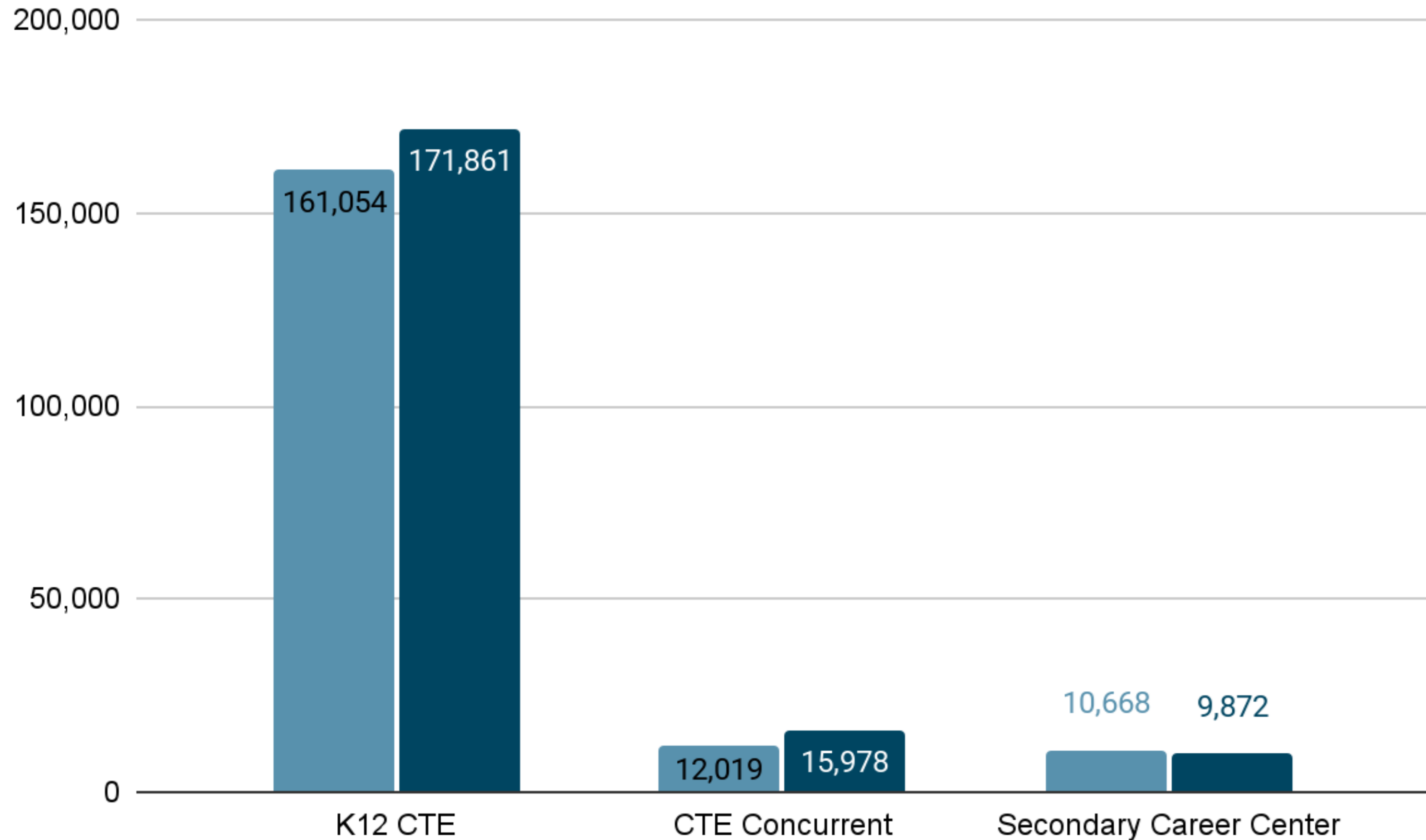
8 Granted to students who receive an average score of at least 3.5 on all AP Exams taken, and scores of 3 or higher on five or more of these exams.

9 Diploma program from College Board based on two year long AP courses: AP Seminar and AP Research.



Indicator	High School (9-12)
	Measure Description (9 total)
Achievement Are students achieving level 3 & 4 on state assessments?	% Proficient English Language Arts
	% Proficient Math
	% Proficient Science
Growth of All Students Are students achieving their individualized growth targets?	% Met Growth Target English Language Arts & English Language Proficiency (ELP)
	% Met Growth Target Math
	% Met Growth Target Science
Growth of Lowest Quarter Are the students who are farthest behind their peers growing?	% Met Growth Target – ELA, Math, and Science combined
Success Ready Graduate Are students graduating in four years? Are students demonstrating postsecondary readiness for enlistment, enrollment, or employment?	% Graduating in four year cohort
	% Graduates with merit or distinction A transitional readiness measure will be used until Success Ready Pathways are fully implemented.

Enrollment Increases



ACCESS: Building on the Success of Arkansas LEARNS

Acceleration

Common Sense

Cost

Eligibility

Scholarships

Standardization



Access to Acceleration

- Replaces Concurrent Challenge Scholarship
- \$65 per credit hour
- Allows for 15 semester hours in each semester
- Pays for 9th, 10th, 11th, and 12th grade years



Arkansas Academic Challenge Scholarship

Students qualify by **one** of the following:

- ACT of 19 (Superscore)
- Accuplacer of 246
- CLT of 58
- High School GPA of 3.0
- **Diploma of Merit**

Awards per semester	2-year college	4-year University
Freshman	\$1,000	\$1,000
Sophomore	\$1,500	\$2,000
Junior	\$2,000	\$2,000
Senior	\$2,500	\$2,500



Governor's Scholars Program

- The state's most academically rigorous scholarship program.
- Students can qualify for this scholarship by either earning a
 - **Diploma of Distinction** (as awarded by the school district) or
 - Associate Degree while graduating from high school.
- **\$5,000/year (\$2,500 per semester)**
- **Stackable with Academic Challenge.**

Distinguished awardees still must earn either a 32 Superscore on the ACT or 1410 on the SAT, and a 3.50 academic grade point average. This award is \$10,000 per year (\$5,000 per semester) but is not stackable with Academic Challenge.



Changes to the Arkansas Workforce Challenge in ACCESS

- Expanded the definition of “approved institution of higher education” to include public or private vocational-technical schools that are:
 - Included on the Workforce Innovation and Opportunity Act eligible training provider list,
 - Qualified to receive approval for veterans' education benefits from the United States Department of Veterans Affairs, or
 - Included on the ADHE Private Career Education list;
- Defined certificate program occupational areas to include:
 - Advanced manufacturing,
 - Health care,
 - Information technology,
 - Construction trades, or
 - Logistics and distribution; and
- Increased the maximum scholarship award a student may receive from \$800 per program to \$3000 per academic year.

Federal Workforce Pell Grant

- As outlined in the H.R. 1 - One Big Beautiful Bill Act of 2025, Workforce Pell expands Pell Grant eligibility to high-quality, short-term workforce programs aligned to labor market demand.
- Program Requirements
 - 150-599 clock hours, or an equivalent number of credit hours
 - At least 8 weeks but less than 15 weeks
 - Offered by an eligible institution of higher education
 - NOT a correspondence course
- Workforce Pell extends traditional Pell eligibility to include individuals with a bachelor's degree, allowing qualified students to use funds for short-term programs that satisfy the guardrails established in H.R. 1.

Federal Workforce Pell Grant Program

The Governor, in consult with the State board, must determine the program:

- Provides an education aligned with the requirements of high-skill, high-wage, or in-demand industry sectors or occupations; and
- Meets the hiring requirements of potential employers in the sectors or occupations; and
- Either
 - (i) leads to a recognized postsecondary credential that is stackable and portable across more than one employer, or
 - (ii) prepares students for employment in an occupation for which there is only one recognized postsecondary credential and provides that credential upon completion; and
- Prepares students to pursue 1 or more certificate or degree programs at 1 or more institutions of higher education (which may include the eligible institution providing the program), including by ensuring
 - (i) that the student, upon completion of the program and enrollment in the related certificate or degree program, will receive academic credit for the Workforce Pell program that will be accepted toward meeting the certificate or degree program requirements, and
 - (ii) the acceptability of the credit toward meeting the certificate or degree program requirements.

Federal Workforce Pell Grant Program

The Department of Education subsequently must also determine that the program:

- Has been offered by the institution for not less than 1 year prior to the date on which ED makes its determination; and
- For each award year, the program has a verified completion rate of at least 70 percent, within 150 percent of the normal time for completion; and
- For each award year, the program has a verified job placement rate of at least 70 percent, measured 180 days after completion; and
- For each award year, the total amount of the published tuition and fees of the program for such year is an amount that does not exceed the value-added earnings of students who received federal financial aid and who completed the program 3 years prior to the award year, as such earnings are determined by calculating the difference between
 - (i) the median earnings of such students, and
 - (ii) the 150 percent of the poverty line applicable to a single individual.

Federal Workforce Pell Grant Program

- Prorated off the overall Pell Grant maximum (currently \$7,395 for 2025-2026).
- “Longer” WFP Program (14 weeks, 599 clock hours)
 - Maximum award: ~ \$3,980
 - Minimum award: ~ \$398
- “Shorter” WFP Program (8 weeks, 150 clock hours)
 - Maximum award: ~ \$1,232
 - Minimum award: ~ \$123

Questions?

Ross White, Director

Division of Career and Technical Education

Arkansas Department of Education

501- 442 - 5277

ross.white@ade.arkansas.gov

Dr. Tina Moore, Director of Workforce Development

Division of Higher Education

Arkansas Department of Education

501- 682 - 1602

tina.moore@adhe.edu

