
2012 Baseline Prison Population Forecast & Act 570 Implementation Tracking

Wendy Naro-Ware
September 2012

**FIGURE 1: Comparison of State Population with Crime Index per 100,000 Residents
Arkansas 2001-2011**

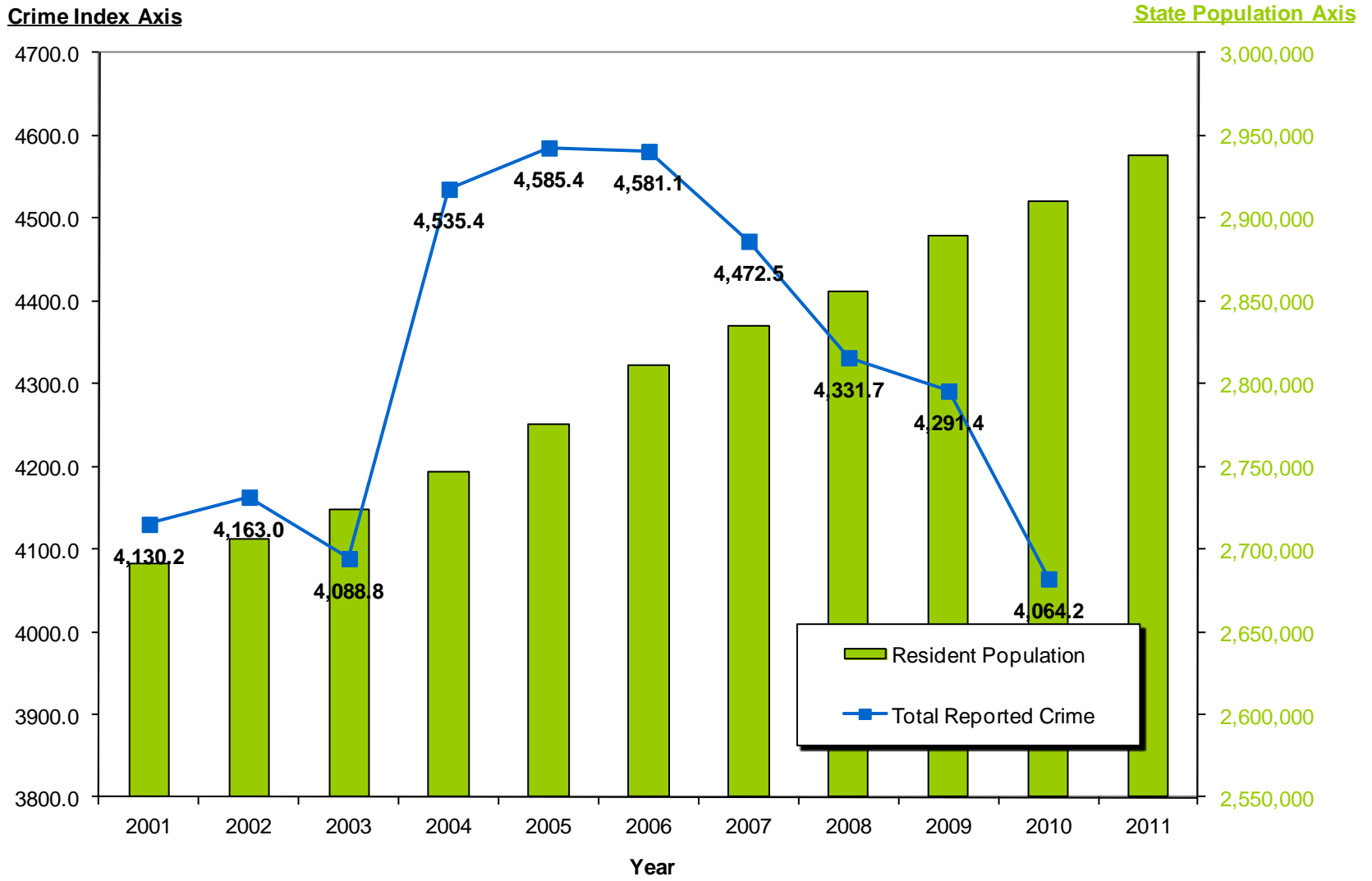


FIGURE 2: Historical Admissions to Prison: 2001-2011

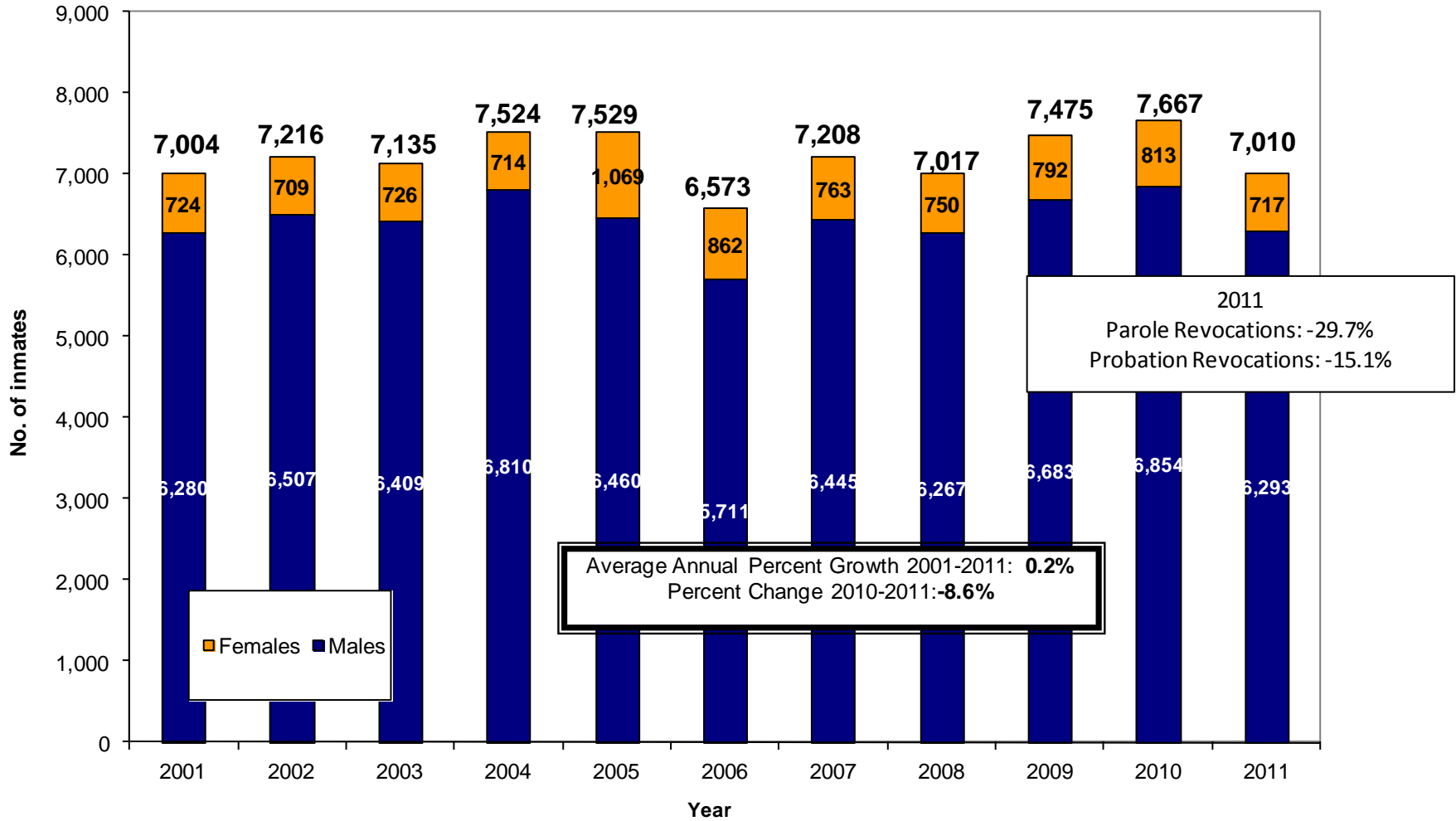


FIGURE 3: Historical Stock Population 2001-2011

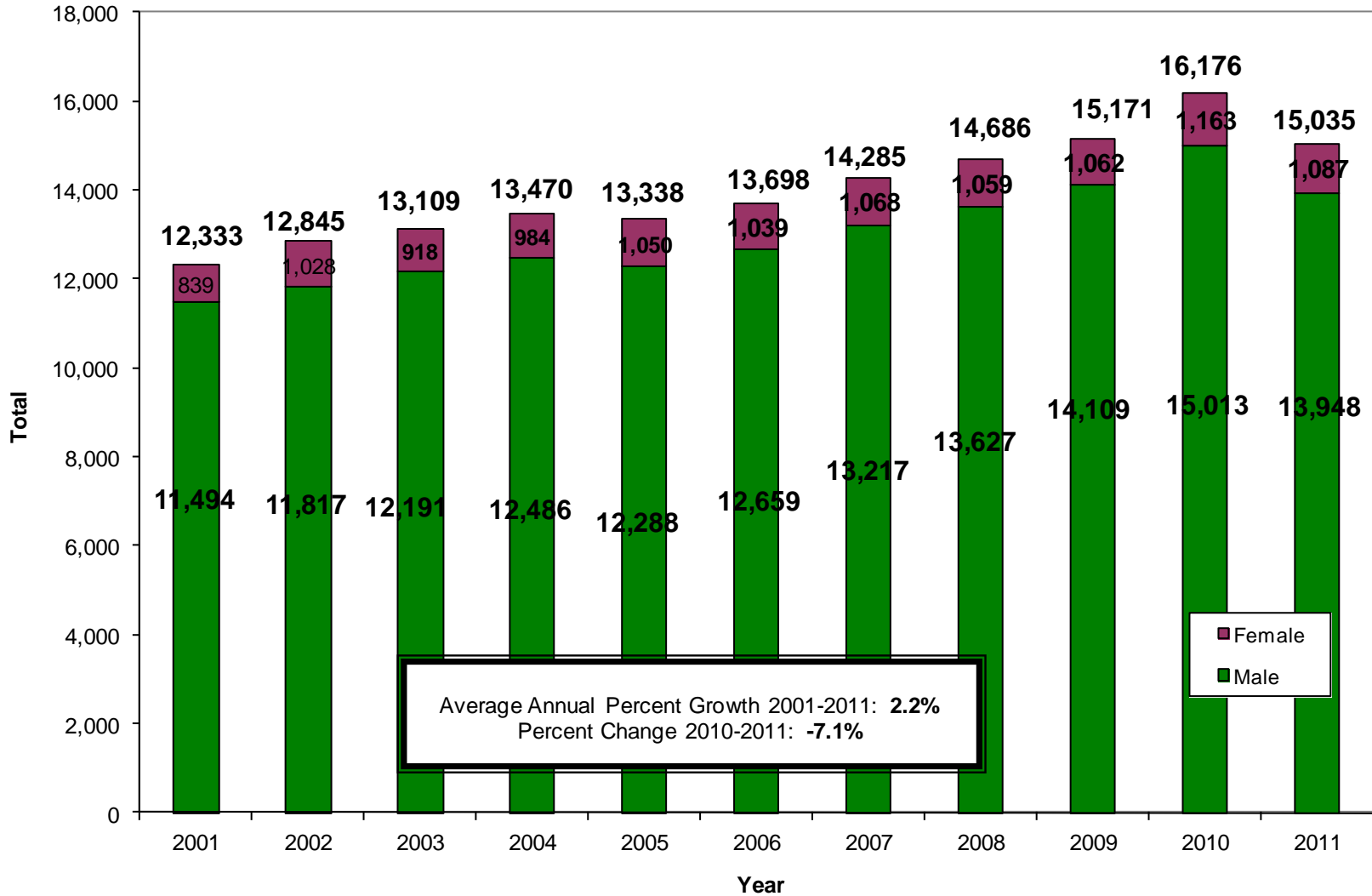
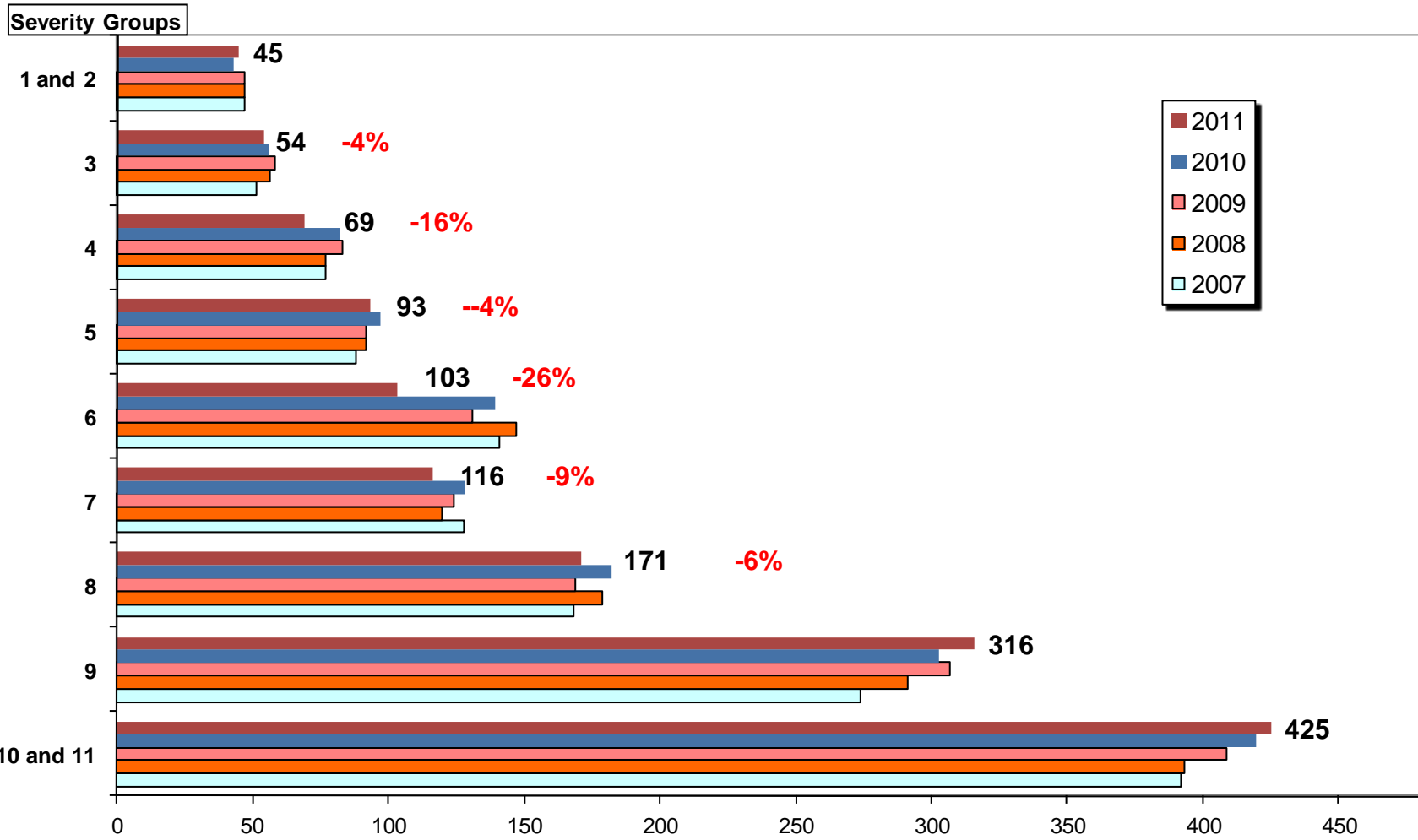


FIGURE 4: Comparison of Average Sentences for New Court Commitments Admitted to Prison by Severity Group Calendar Years 2007 Thru 2011



*Offenders sentence to Life were omitted.

Average Sentence in Months

**TABLE 1
ARKANSAS DEPARTMENT OF CORRECTION
HISTORICAL ACT 1326/1135/1268 ADMISSIONS & YEAR END COUNT
2001-2011**

| Year | Total 70%ers Admitted | Avg. Sentence (Mos.) | Total End of Year 70%er | Total 50%ers Admitted | Total End of Year 50%er |
|------------------------------|--------------------------------------|-------------------------------------|--------------------------------------------|--------------------------------------|--------------------------------------------|
| 2001 | 447 | 236 | 1,808 | - | - |
| 2002 | 413 | 216 | 1,980 | - | - |
| 2003 | 485 | 218 | 2,298 | - | - |
| 2004 | 482 | 220 | 2,650 | - | - |
| 2005 | 354 | 197 | 2,709 | - | - |
| 2006 | 306 | 225 | 2,736 | - | - |
| 2007 | 249 | 225 | 2,762 | - | - |
| 2008 | 274 | 257 | 2,788 | - | - |
| 2009 | 232 | 263 | 2,561 | 109 | 406 |
| 2010 | 313 | 250 | 2,694 | 156 | 437 |
| 2011 | 276 | 236 | n/a | 91 | n/a |
| Numeric Change 2001- 2011 | -171 | 0 | - | - | |
| Percent Change 2001- 2011 | -38.3% | 0.0% | - | - | |
| Percent Change 2010- 2011 | -11.8% | -5.6% | - | 43.1% | |

Source: ADC data extract admission and stock files

TABLE 2
ARKANSAS DEPARTMENT OF CORRECTION
OFFENDERS (RELEASED VIA DISCHARGE OR PAROLE)
HELD BEYOND TRANSFER ELIGIBILITY DATE IN 2010 & 2011

| ID-Group* | Total Released via Discharge/Parole | Total Held Beyond Transfer Eligibility Date | % Held Beyond Transfer Eligibility Date | For those held beyond TE Date, average # of months held over |
|---------------------------|-------------------------------------------|------------------------------------------------------|-----------------------------------------------------|-----------------------------------------------------------------------------|
| 2010 | | | | |
| New Commitments – Males | 3,222 | 1,840 | 57.1% | 6.7 |
| New Commitments – Females | 472 | 273 | 57.8% | 2.9 |
| TOTAL | 3,694 | 2,113 | 57.2% | 6.2 |
| SEPT. - DEC. 2011 | | | | |
| New Commitments – Males | 1,012 | 511 | 50.5% | 6.4 |
| New Commitments – Females | 181 | 54 | 29.8% | 4.6 |
| TOTAL | 1,193 | 565 | 47.4% | 4.2 |

*Excludes those with an offense date before 1/1/94, lifers, parole violator returns and 70%-ers.

Source: ADC extract data release files

**TABLE 3
EPA RELEASES CY 2004-2011**

| Year | Act 1721 | Act 418 | Total |
|-------------|---------------------|----------------|--------------|
| 2004 | 233 | 1,391 | 1,624 |
| 2005 | 106 | 1,540 | 1,646 |
| 2006 | 196 | 1,493 | 1,689 |
| 2007 | 294 | 1,806 | 2,100 |
| 2008 | 369 | 1,708 | 2,077 |
| 2009 | 512 | 1,756 | 2,268 |
| 2010 | 319 | 1,853 | 2,172 |
| 2011 | 319 | 2,023 | 2,297 |

Source: ADC data runs from EOMIS

Figure 5: Trends in Male & Female Inmate Population for the Last 18 Months

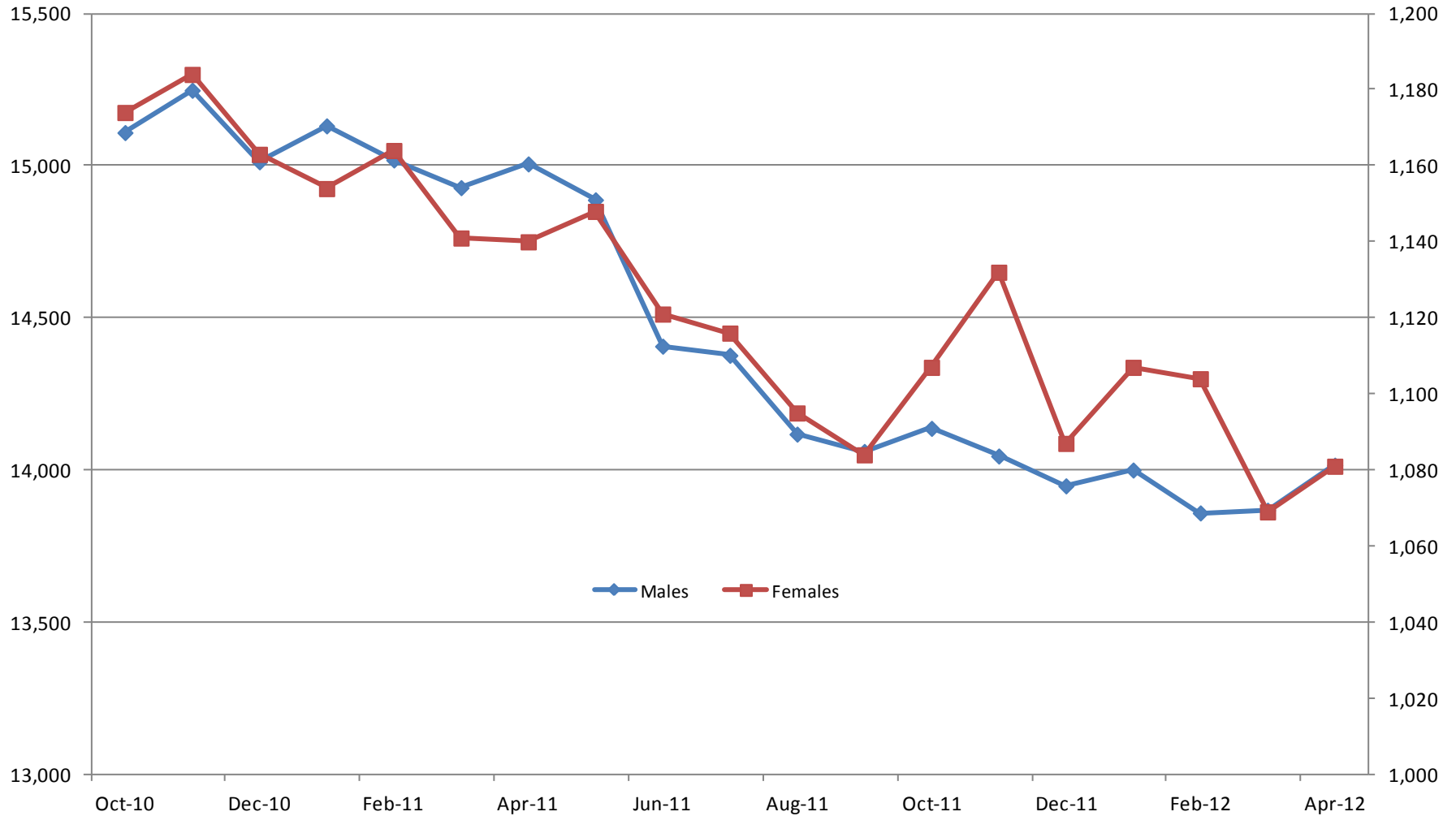


Figure 6: Historical & Projected ADC Population: 2001-2022

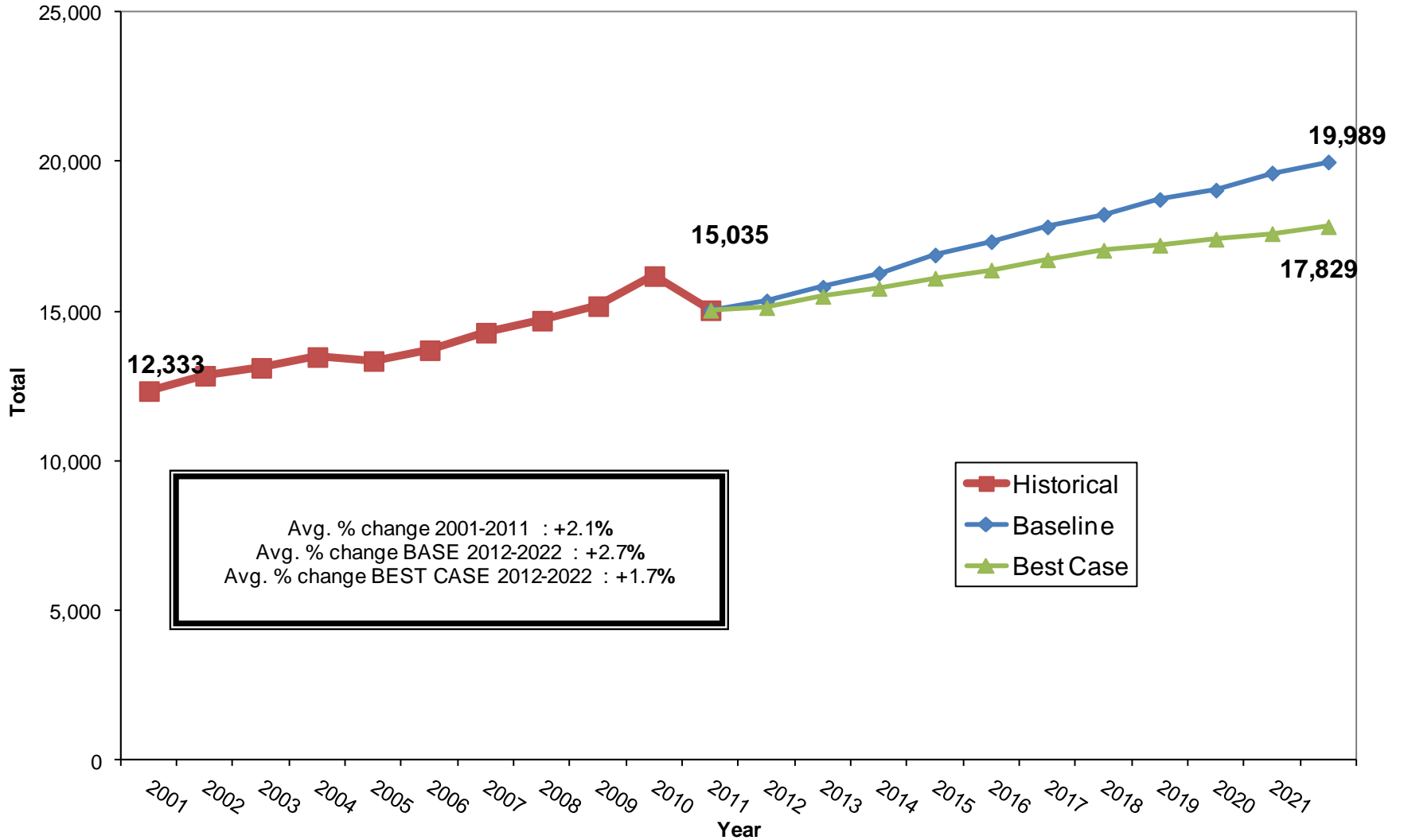


Figure 7: Historical Probation Admissions & Year-End Population 2004-2011

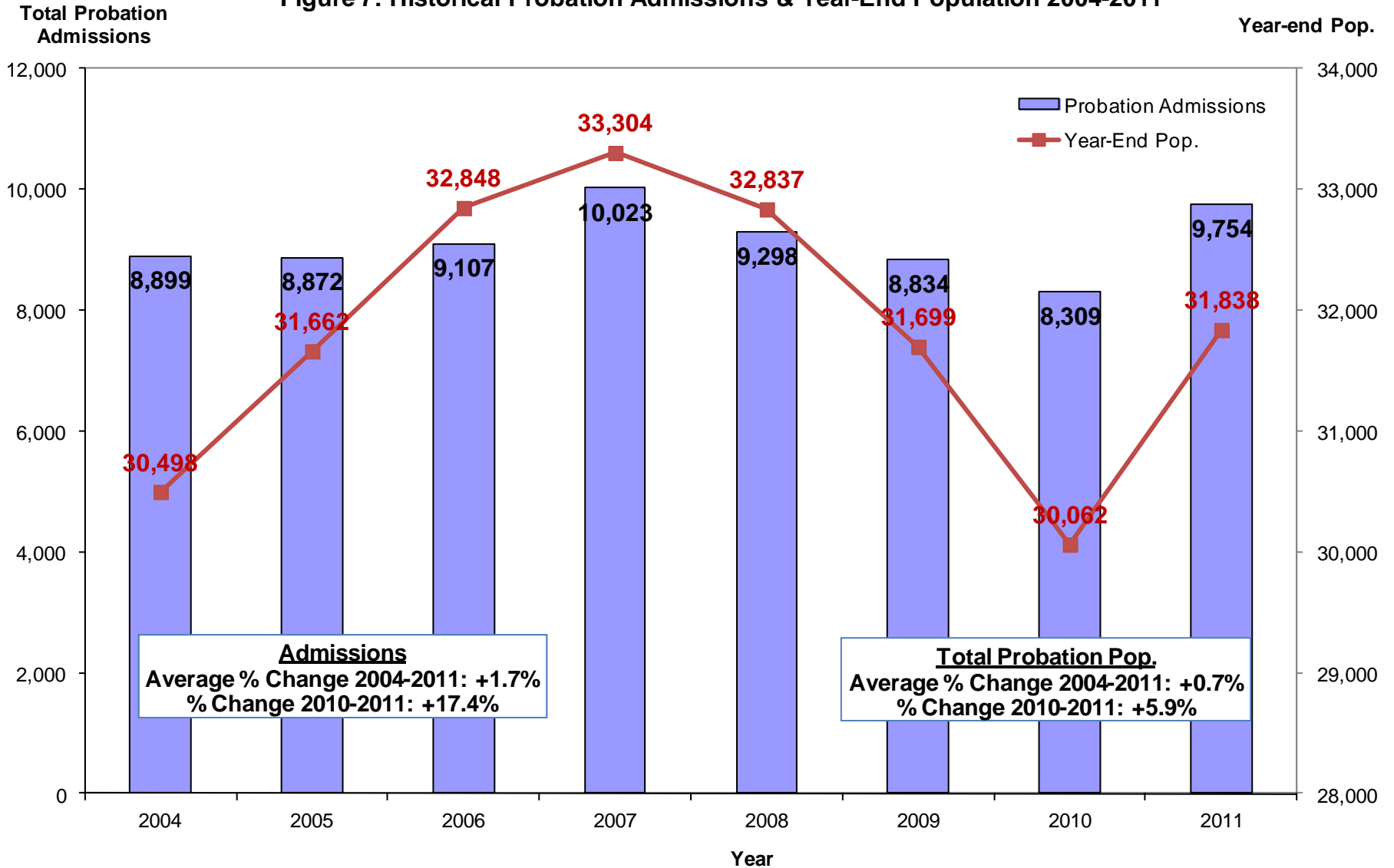


Figure 8: Historical Parole Admissions & Year-End Population 2001-2011

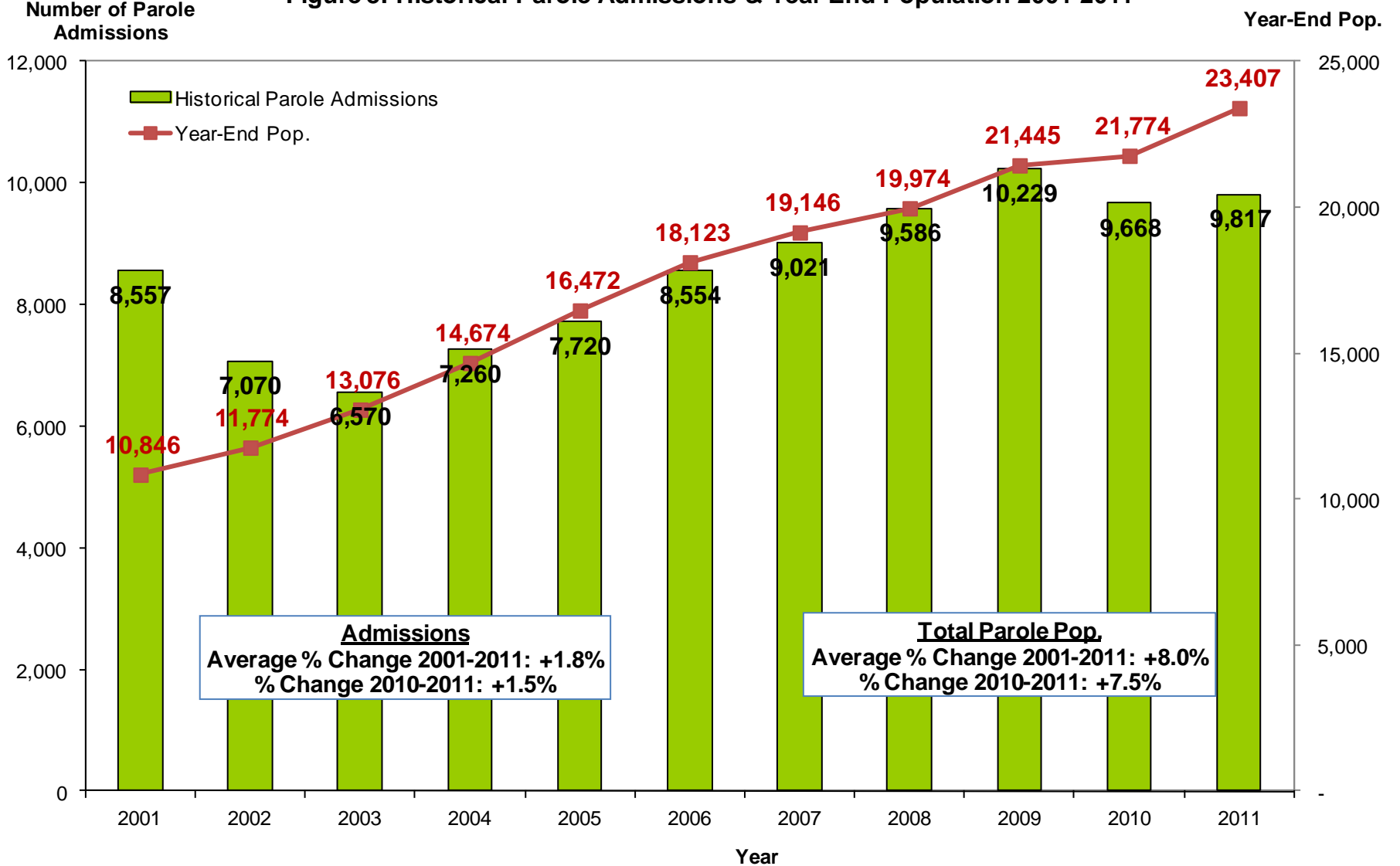


Figure 9: Parole Projections

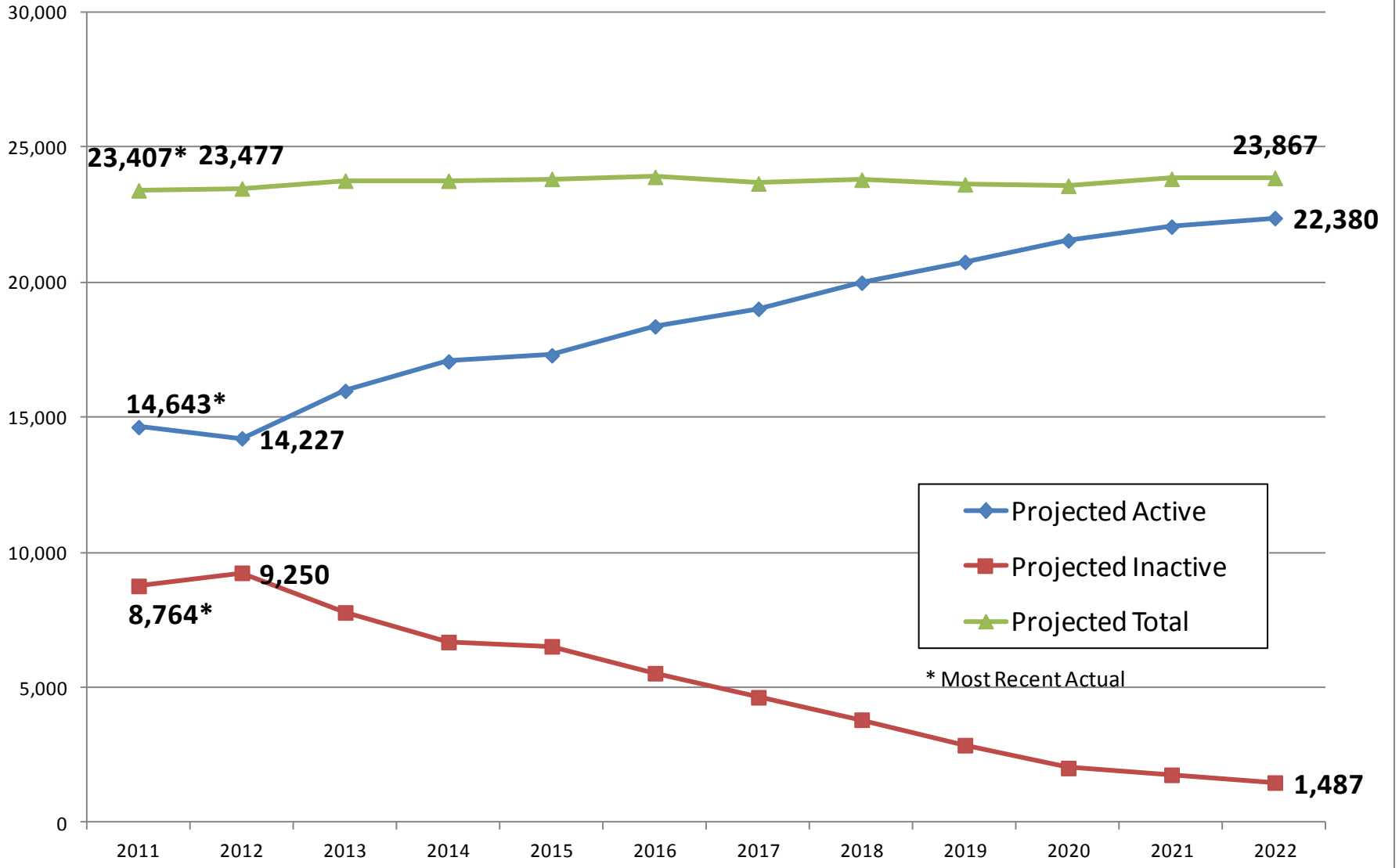


Figure 10: Probation Projections

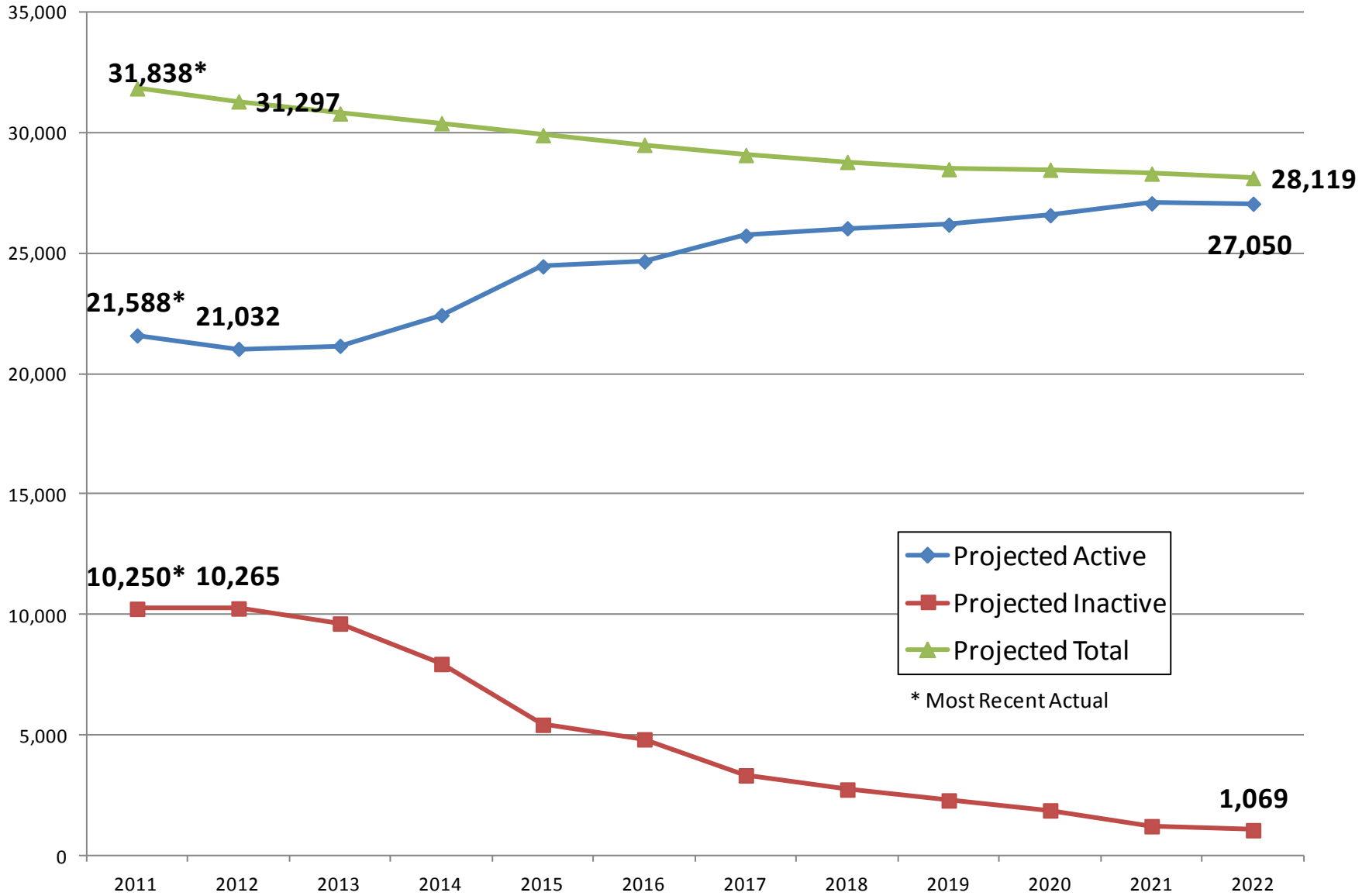
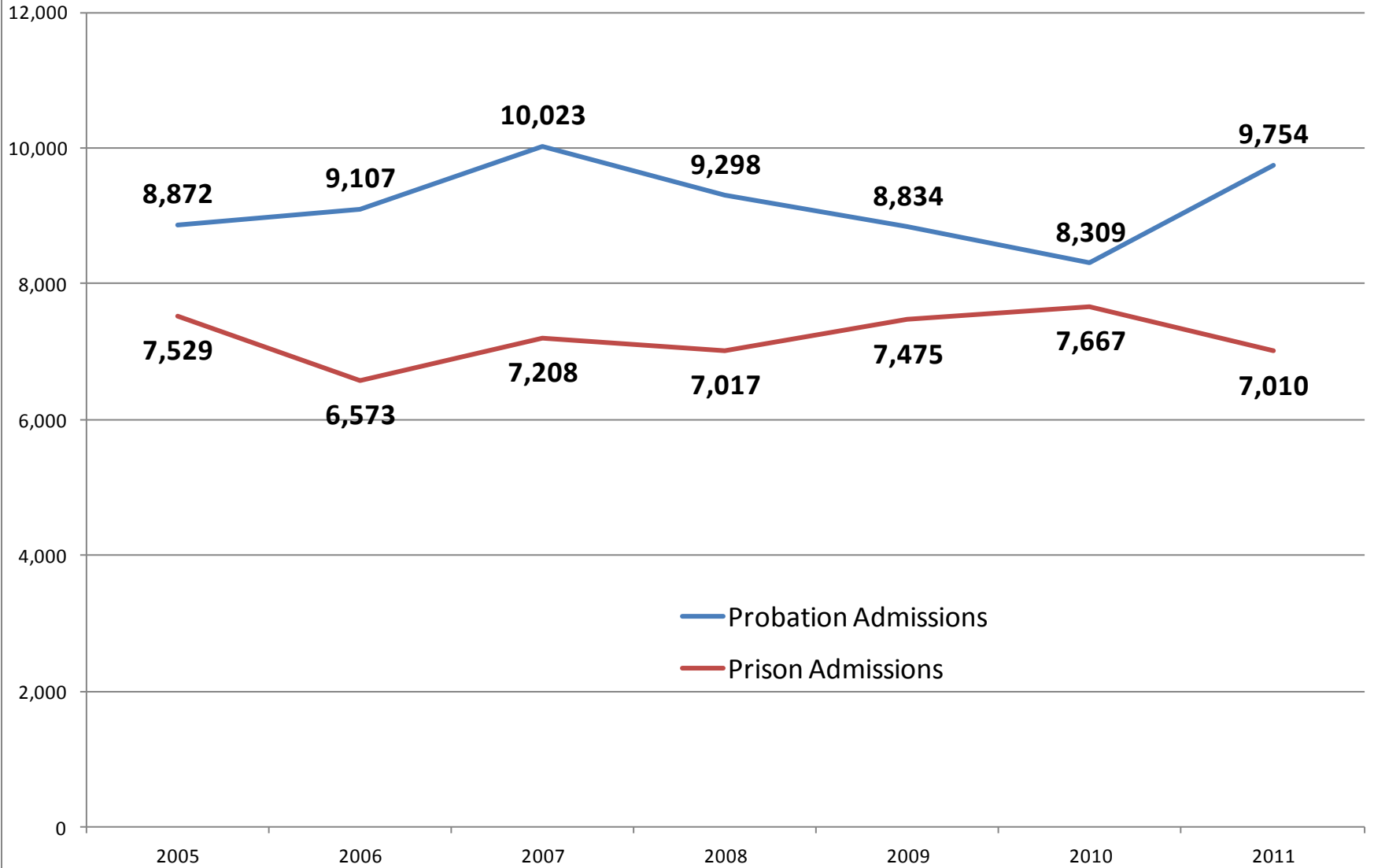


Figure 11: Comparison of Historical Prison & Probation Admissions



STATE OF ARKANSAS

ACT 570 POPULATION IMPACTS

- *Merging of Sentencing Guidelines /Sentencing and Commitment Report*

The above changes were assumed to reduce the overall net sentences for offenders in levels 1-5 by 20% (return to CY 2002 levels). No diversions are assumed in this impact.

Changes took effect January 2012. No results available from this effort.

In 2011, sentences in level 1-5 decreased 10% collectively.

STATE OF ARKANSAS

ACT 570 POPULATION IMPACTS

• Parole Release Risk Instrument/ Parole Releases From Jail

The combination of these efforts will assumed to decrease the number of offenders held beyond their transfer eligibility date to 25%. Offenders held beyond their transfer eligibility date are assumed to remain an additional 3 months before release.

By the end of 2011, the held beyond rate dropped to 47% for 4 months –halfway to the original assumption.

Parole board risk releases instrument began in January 2012.

**ARKANSAS DEPARTMENT OF CORRECTION
OFFENDERS (RELEASED VIA DISCHARGE OR PAROLE) HELD BEYOND TRANSFER ELIGIBILITY DATE IN 2010 & 2011**

| ID-Group* | Total Released via Discharge/Parole | Total Held Beyond Transfer Eligibility Date | % Held Beyond Transfer Eligibility Date | For those held beyond TE Date, average # of months held over |
|---------------------------|-------------------------------------|---------------------------------------------|-----------------------------------------|--------------------------------------------------------------|
| 2010 | | | | |
| New Commitments – Males | 3,222 | 1,840 | 57.1% | 6.7 |
| New Commitments – Females | 472 | 273 | 57.8% | 2.9 |
| TOTAL | 3,694 | 2,113 | 57.2% | 6.2 |
| SEPT. - DEC. 2011 | | | | |
| New Commitments – Males | 1,012 | 511 | 50.5% | 5.4 |
| New Commitments – Females | 181 | 54 | 29.8% | 3.6 |
| TOTAL | 1,193 | 565 | 47.4% | 4.2 |

*Excludes those with an offense date before 1/1/94, lifers, parole violator returns and 70%-ers.

Source: ADC extract data release files

STATE OF ARKANSAS

ACT 570 POPULATION IMPACTS

- ***Changes in Drug Statutes***

The described drug status changes were assumed to have a projected impact on approximately 265 admissions will save an average of 10 months in length of stay.

At the end of 2011, no cases had been admitted to ADC under the new drug statutes.

In 2011, cases admitted to ADC with a most serious charge of drug possession with intent to manufacture dropped 17%.

STATE OF ARKANSAS

ACT 570 POPULATION IMPACTS

- ***Changes in Theft/Property Threshold Amount***

The described theft/property status changes were assumed to have a projected impact on approximately 85 admissions to save an average of 9 months in length of stay.

At the end of 2011, no cases had been admitted to ADC under the new theft statutes.

In 2011, cases admitted to ADC with a most serious charge under the affected theft statutes declined 19% -most notably in: fraudulent use of a credit card, hot check violation and theft by receiving.

STATE OF ARKANSAS

ACT 570 POPULATION IMPACTS

- ***Earned Discharge from Parole and Probation***

It was assumed there would be approximate 66 admissions reduction in probation violators returned. It was also assumed approximately 29% of parole violators returned to prison will serve approximately 10 months less with earned goodtime on parole.

At the end of 2011, no cases had been released from DCC having earned credits for discharge from parole or probation.

In 2011, probation revocations returned to prison decreased 15% and parole revocations admitted to prison decreased 30%.

STATE OF ARKANSAS

ACT 570 POPULATION IMPACTS

- ***120 Day Electronic Monitoring Release for Non-Violent Offenders***

It is assumed that approximately 35% of all offenders meeting the early release electronic monitoring criteria will be released at 120 days.

At the end of 2011, electronic monitoring release had not been established.

In 2011, cases admitted to ADC in the sentencing guidelines boxes targeted for EM released decreased by 209 admissions.

STATE OF ARKANSAS

ACT 570 POPULATION IMPACTS

- Intermediate Sanctions for Probation Revocations***

In accordance with new policies and procedures, it is assumed the creation and implementation of an intermediate sanctions grid will result in a 15% reduction in the number of probation violations returned to prison.

2010 & 2011 PROBATION REVOCATIONS TO ADC BY OFFENSE

| Offense Group | N | Estimated % of Prison Admissions | N | Estimated % of Prison Admissions | Avg. Sent. (mos.) |
|---------------------|-------|----------------------------------|-------|----------------------------------|-------------------|
| | 2010 | | 2011 | | |
| Murder | 3 | 0.0% | 1 | 0.0% | 600.0 |
| Assault | 27 | 0.4% | 37 | 0.5% | 45.4 |
| Sex crime | 30 | 0.4% | 20 | 0.3% | 71.1 |
| Robbery | 46 | 0.6% | 29 | 0.4% | 70.5 |
| Drug distribution | 330 | 4.3% | 312 | 4.4% | 63.9 |
| Drug possession | 43 | 0.6% | 15 | 0.2% | 67.2 |
| Burglary | 188 | 2.5% | 24 | 0.3% | 36.5 |
| Battery | 101 | 1.3% | 83 | 1.2% | 51.6 |
| Theft | 169 | 2.2% | 182 | 2.6% | 64.2 |
| Fraud | 52 | 0.7% | 40 | 0.6% | 44.3 |
| Forgery | 47 | 0.6% | 46 | 0.6% | 58.2 |
| Weapons/explosives | 48 | 0.6% | 27 | 0.4% | 55.9 |
| DWI | 8 | 0.1% | 1 | 0.0% | 48.0 |
| Other violent | 83 | 1.1% | 93 | 1.3% | 59.8 |
| Other property | 20 | 0.3% | 18 | 0.3% | 71.3 |
| Other non-violent | 54 | 0.7% | 34 | 0.5% | 60.6 |
| Criminal attempt | 18 | 0.2% | 12 | 0.2% | 107.0 |
| Criminal conspiracy | 12 | 0.2% | 6 | 0.1% | 86.6 |
| Unknown | 17 | 0.2% | 120 | 1.7% | 72.1 |
| All | 1,296 | 16.9% | 1,100 | 15.5% | 62.6 |

In 2011, probation revocations returned to prison decreased 15.1% -most notably in for a most serious charge of burglary.

Source: ADC CY 2011 admissions data extract file; DCC CY 2010 probation release extract file