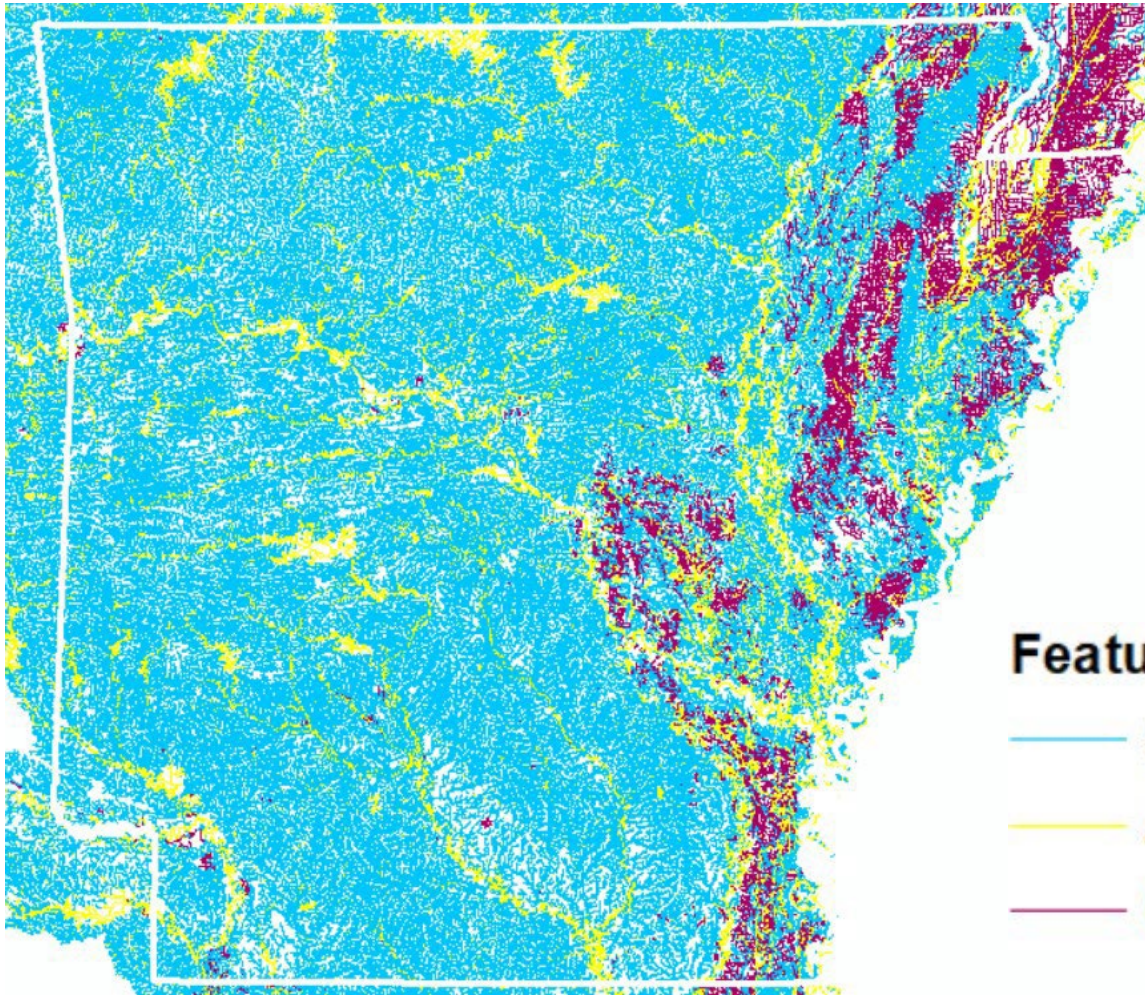


RIVERS AND STREAMS AND COMMUNITIES IN AFFECTED AREAS



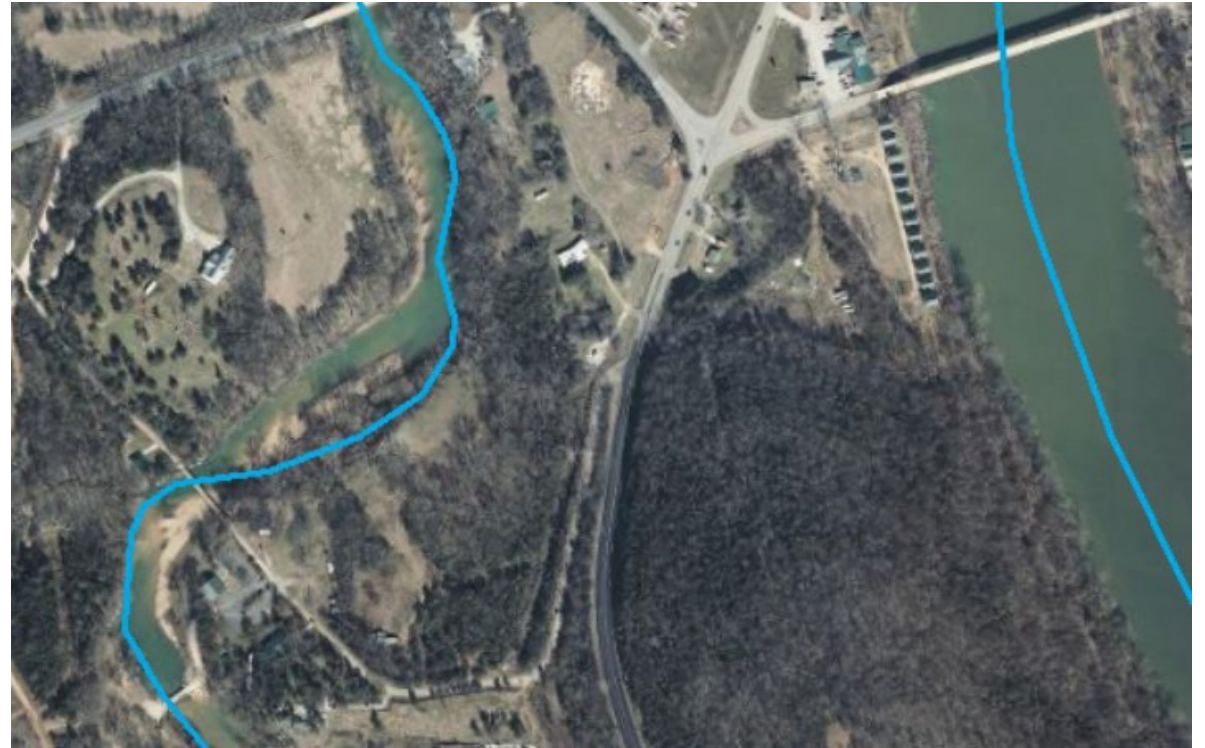
NATIONAL HYDROGRAPHY DATABASE



Base for Regulatory Data
APC&E Commission
ANRC
Water Quality Projects

Feature Type

	StreamRiver	3+ Million Segments
	ArtificialPath	1.3 Million Segments
	CanalDitch	38.3 Thousand Segments



SOUTH SYLAMORE CREEK, STONE COUNTY

Most of our stream maps are from the original 1:24,000-scale USGS topographic mapping program was active from 1947 to 1992.

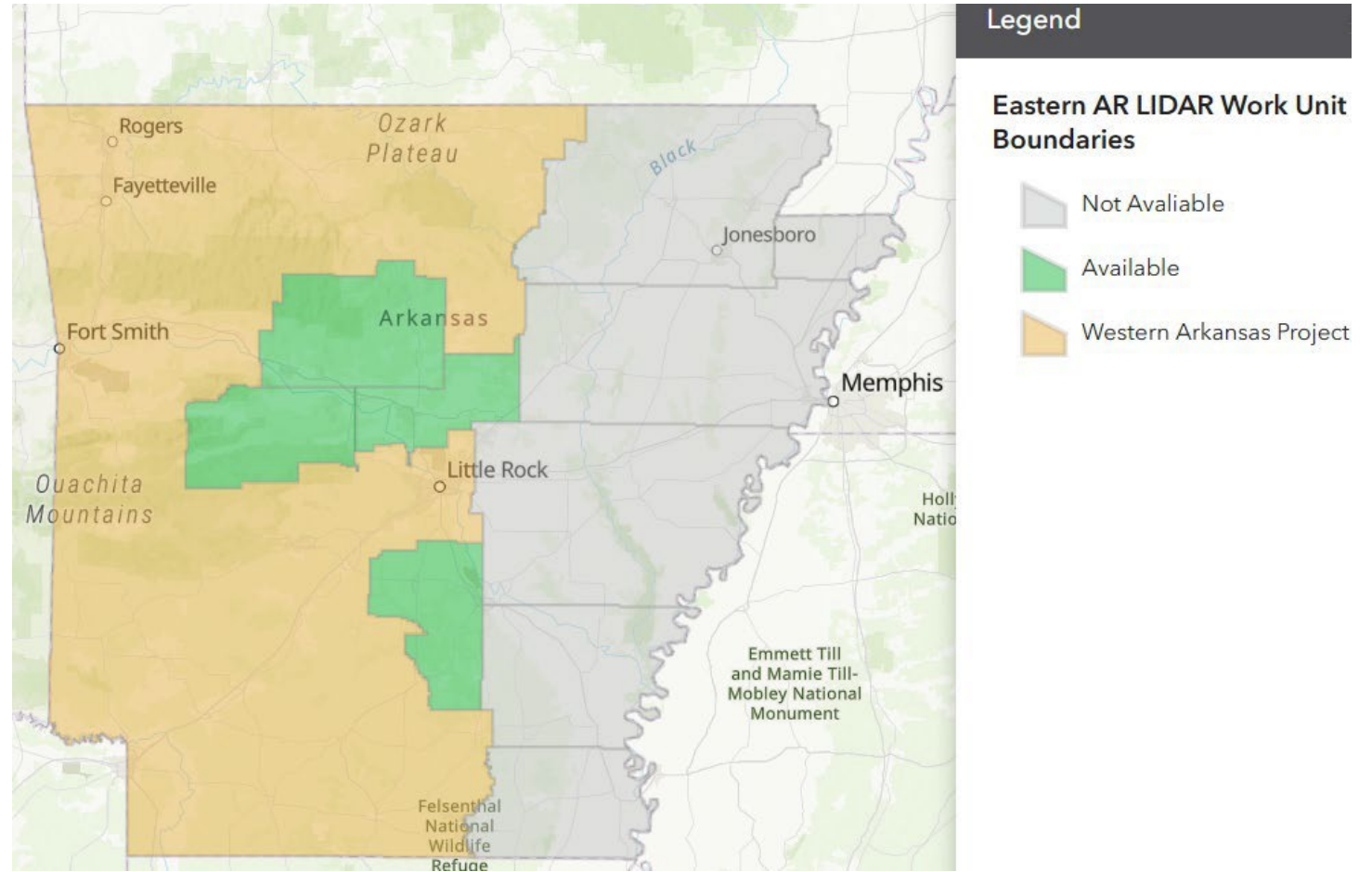
3DHP

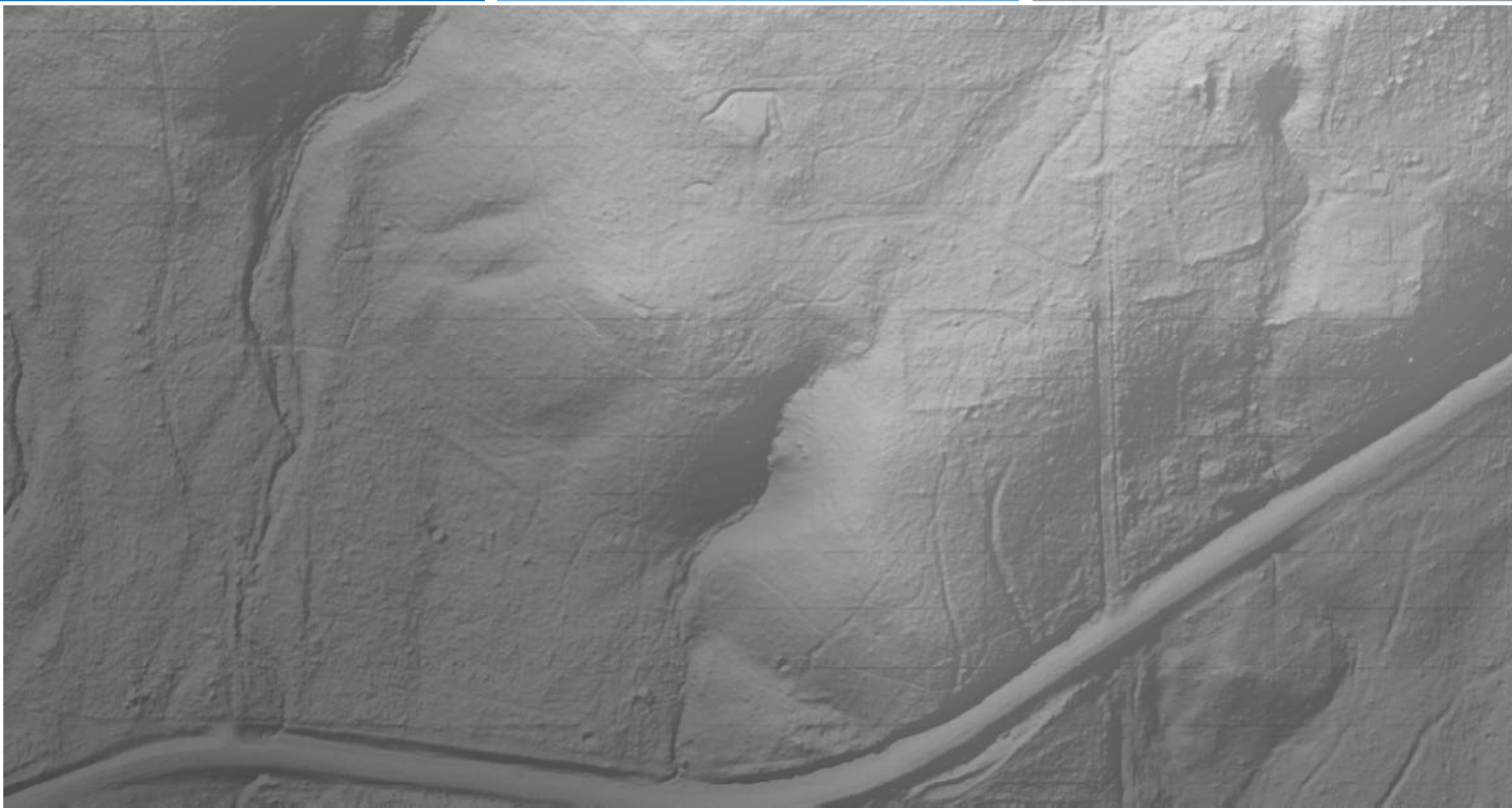
- The implementation of 3D National Hydrography Program (3DHP) marks the start of a new era of water data - the first systematic remapping of the Nation's hydrography



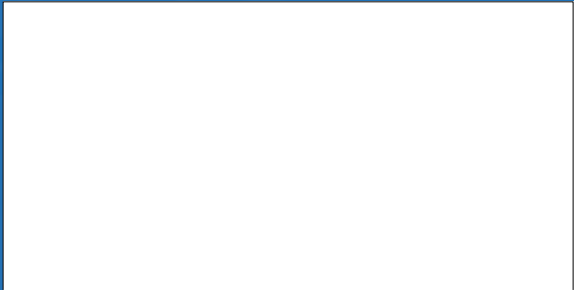
STATEWIDE 3- DIMENSION ELEVATION PROGRAM STATUS

- Collecting very high resolution terrain data using LIDAR technology





CENTRAL AVENUE HOT SPRINGS





Appendix 2.--High-water-mark elevations in the vicinity of Hot Springs for the flood of May 19-20, 1990--Continued

High-water-mark number	Temporary bench mark elevation	High-water-mark elevation ¹	Description of high-water mark and temporary bench mark location
Hot Springs Creek along Central Avenue			
HSC24	--	629.9	Heart Rock Cafe-Bakery 101 Central Avenue. HWM is 1.83 feet on downstream side of building
HSC25	--	627.9	Colonial Pancake House 101 Central Avenue. HWM is 1.71 feet above door sill.
HSC26	--	626.9	115-A Central Avenue. HWM is 1.27 feet above inside floor.

FLOOD OF MAY 19-20, 1990, HOT SPRINGS, ARKANSAS

U.S. GEOLOGICAL SURVEY WATER-RESOURCES INVESTIGATIONS REPORT 92-4007

NEXT STEPS – RECOMMENDATIONS

- 2026 – 2027 Complete Statewide 3 Dimension Elevation Program (3DEP) – ON TRACK
- 2026 – 2027 Pilot 3 Dimension Hydrography Program (3DHP)
- Encourage Counties to Participate in Natl Flood Insurance Program
- Continue State Partnerships with Stream Gauge Monitoring

QUESTIONS?

- (501) 682-2943
- <https://gis.arkansas.gov>
- shelby.johnson@arkansas.gov



ARKANSAS
GIS OFFICE