

*Current and Potential AGFC  
Stream Habitat Program Projects  
with  
Emphasis on the Kings River*

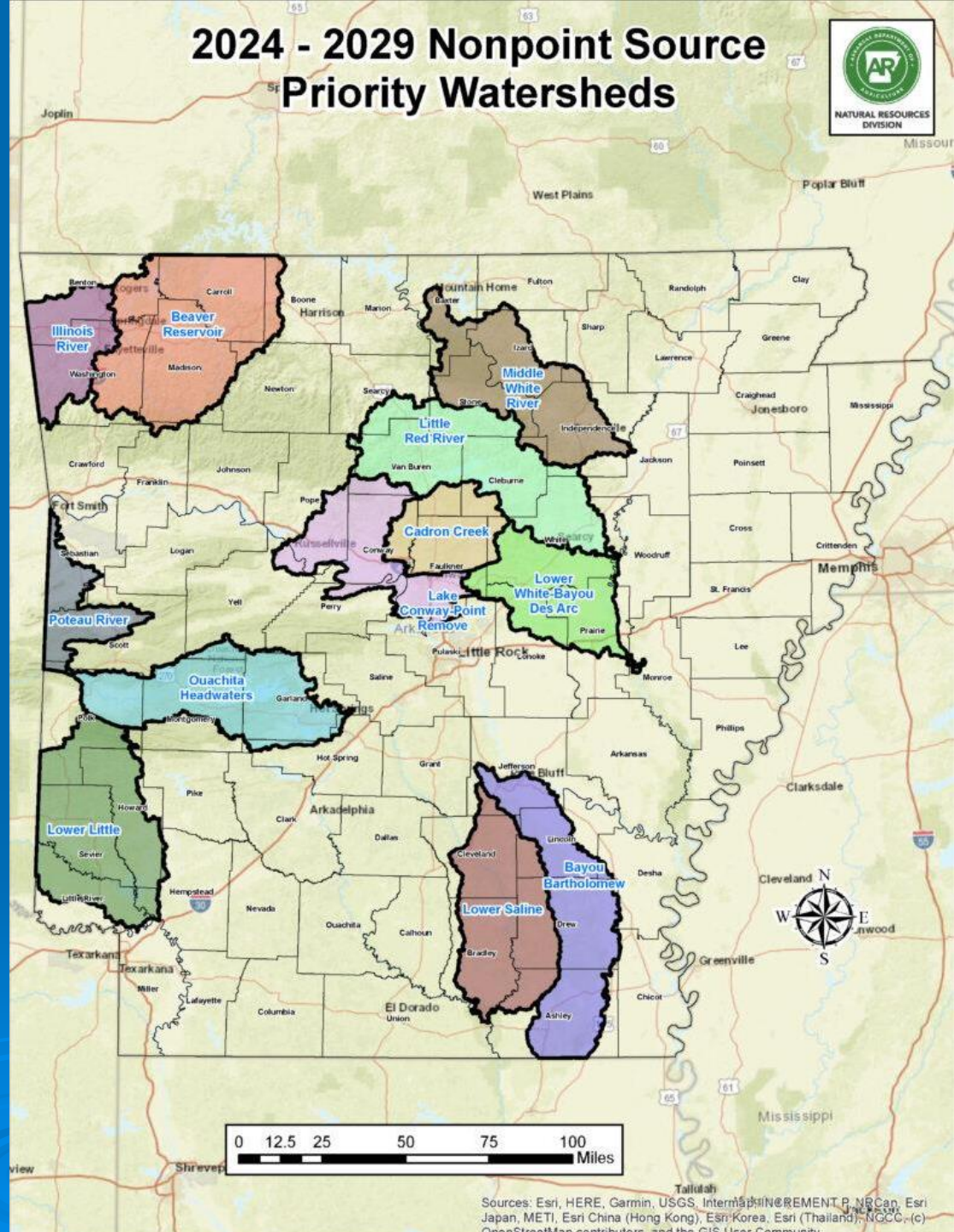


Sean Saunders  
North Central Arkansas  
Stream Habitat Coordinator

# 2024 - 2029 Nonpoint Source Priority Watersheds



- Arkansas has 137,224 miles of streams.
- 12 NPS Watersheds.



Sources: Esri, HERE, Garmin, USGS, Intermap, INCREMENT P, NRCan, Esri Japan, METI, Esri China (Hong Kong), Esri Korea, Esri (Thailand), NGCC, OpenStreetMap contributors, and the GIS User Community



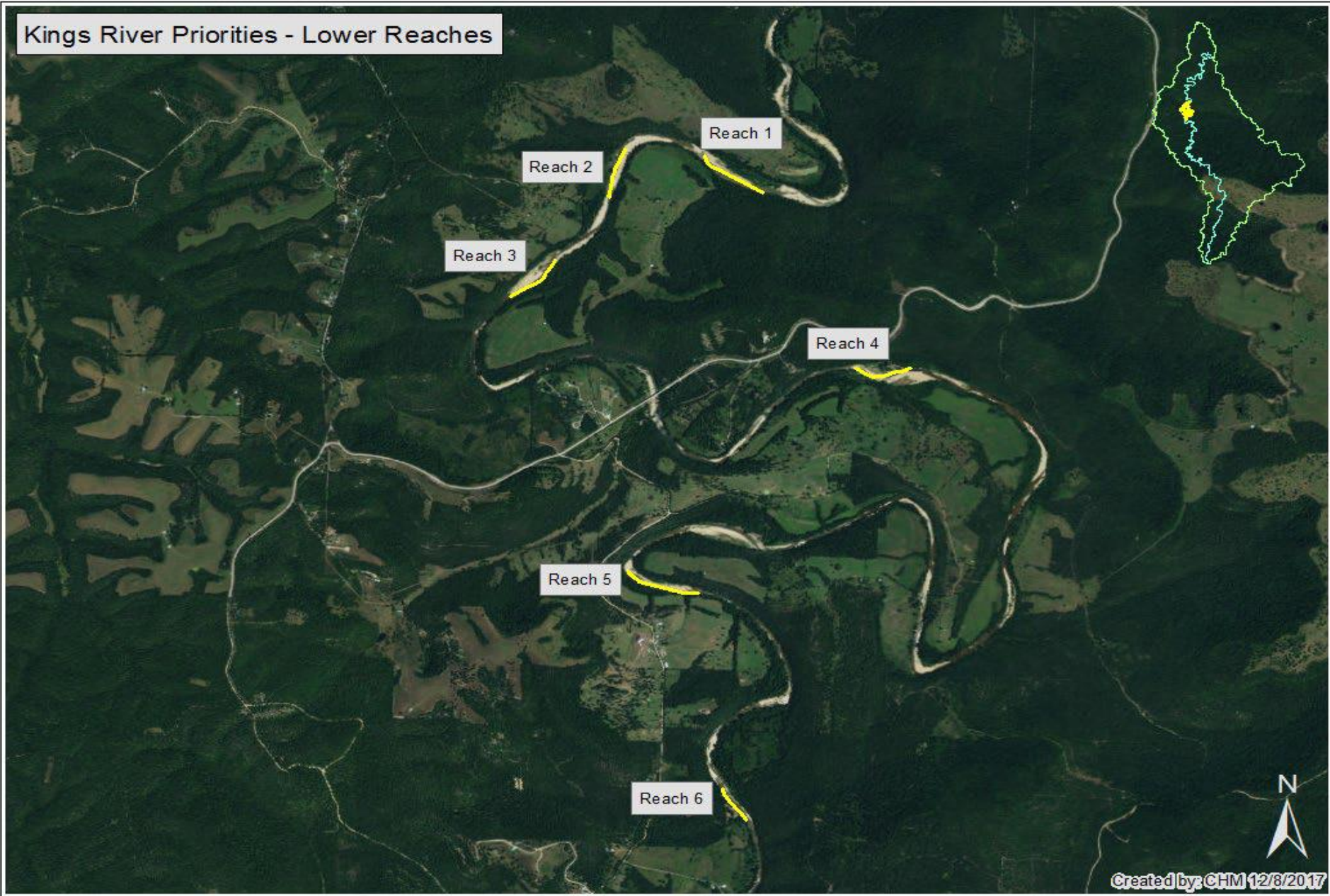
# Kings River Bank Erosion Hazard Index

- 13,250 feet or 2.5 miles of bank
- Average bank height 8.5 feet
- Predicted Sediment Loss 19,000 tons per year





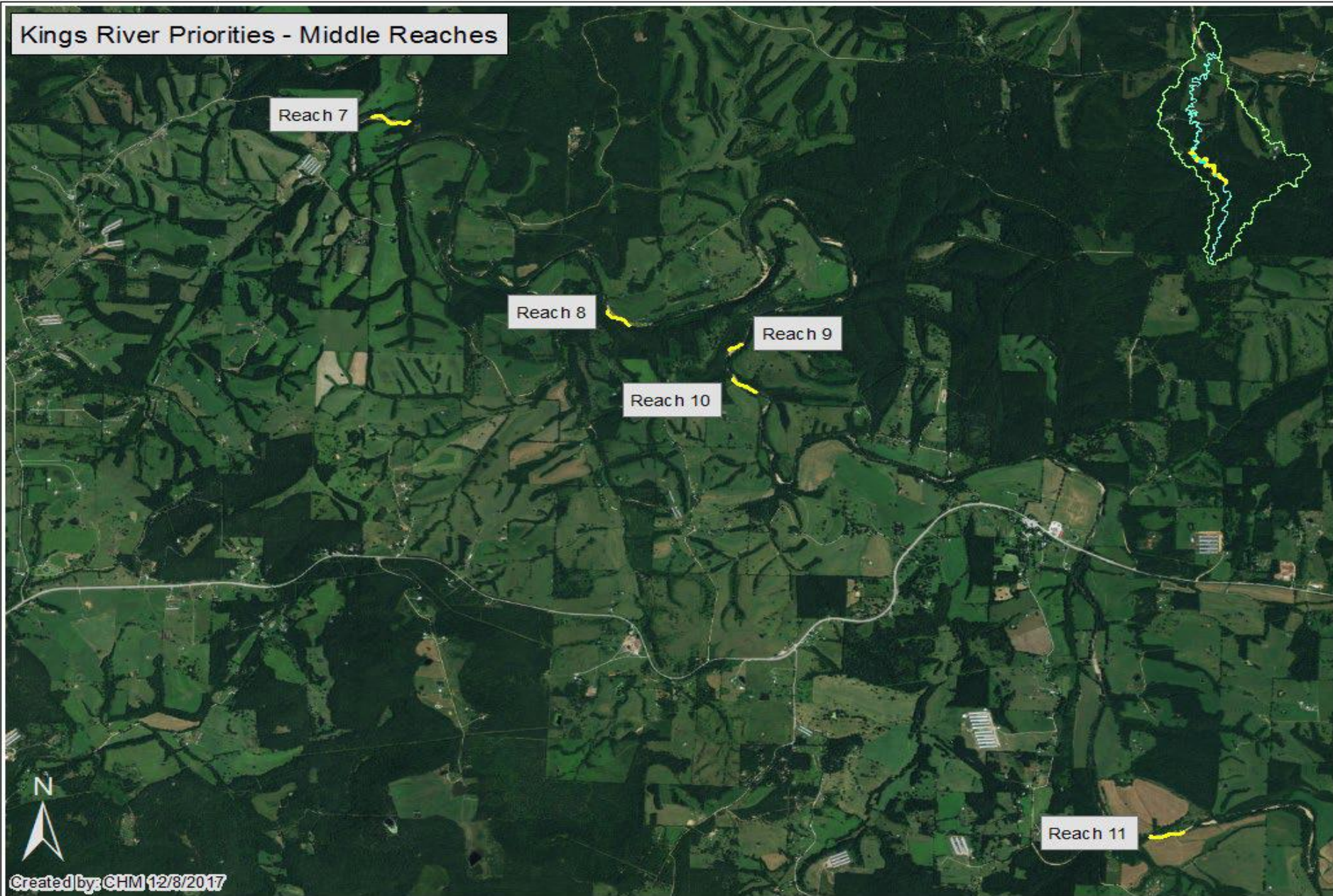
## Kings River Priorities - Lower Reaches



1994-2014 Measured Sediment Loss 35,274 tons per year.



## Kings River Priorities - Middle Reaches

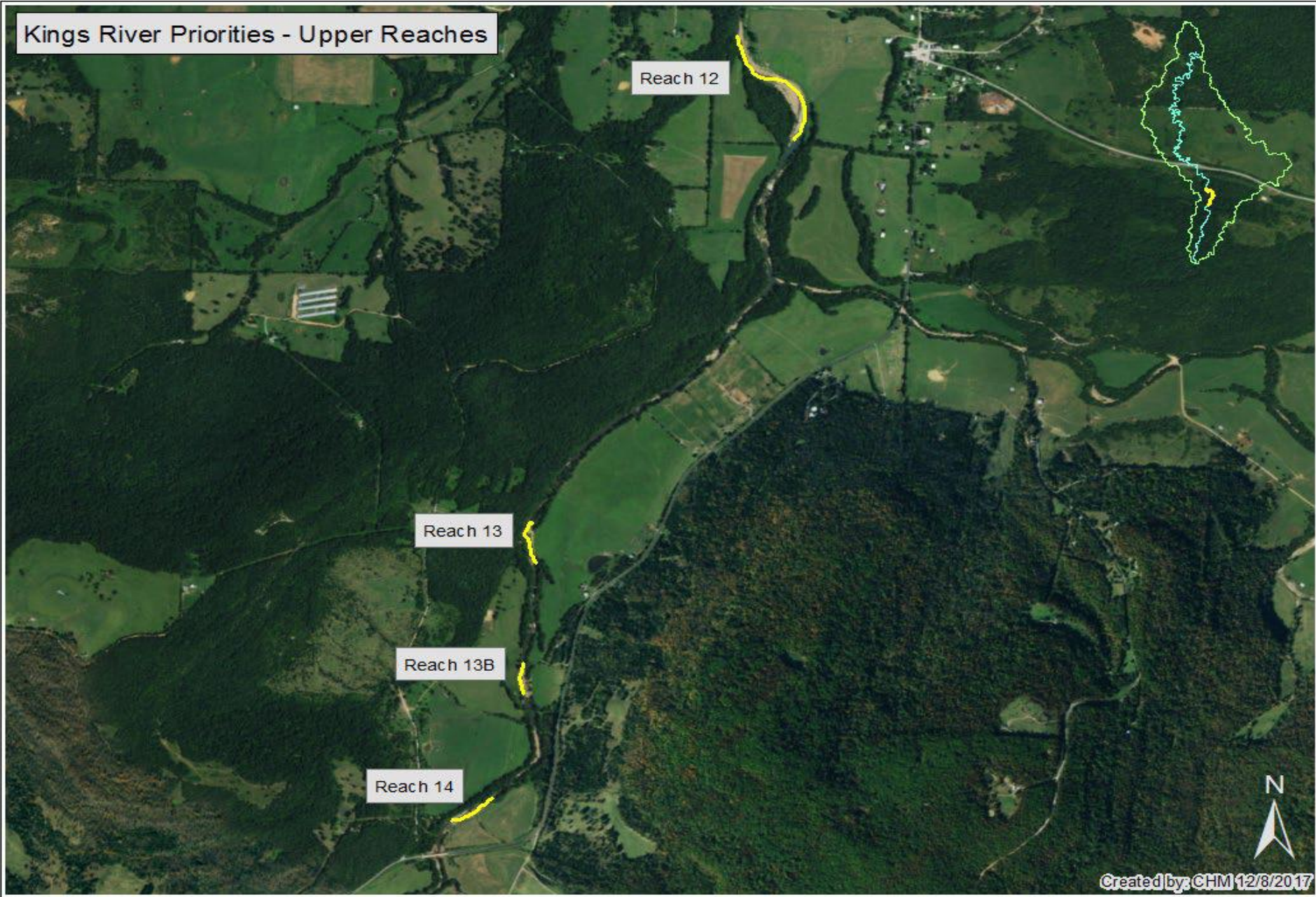


Created by: CHM 12/8/2017

1994-2014 Measured Sediment Loss 8,734 tons per year.



## Kings River Priorities - Upper Reaches



1994-2014 Measured Sediment Loss 2,963 tons per year.



# Reach 1: Kings River Preserve

## North Beach





## Reach 1

Kings River Priorities

### Legend

- RB\_1994
- RB\_2006
- RB\_2014



1994-2014 Streambank moved 235 feet. Length of bank 1400 linear feet.  
Measured Sediment Loss 7,415 tons per year.



# Reach 4: Kings River Preserve

## The Anvil

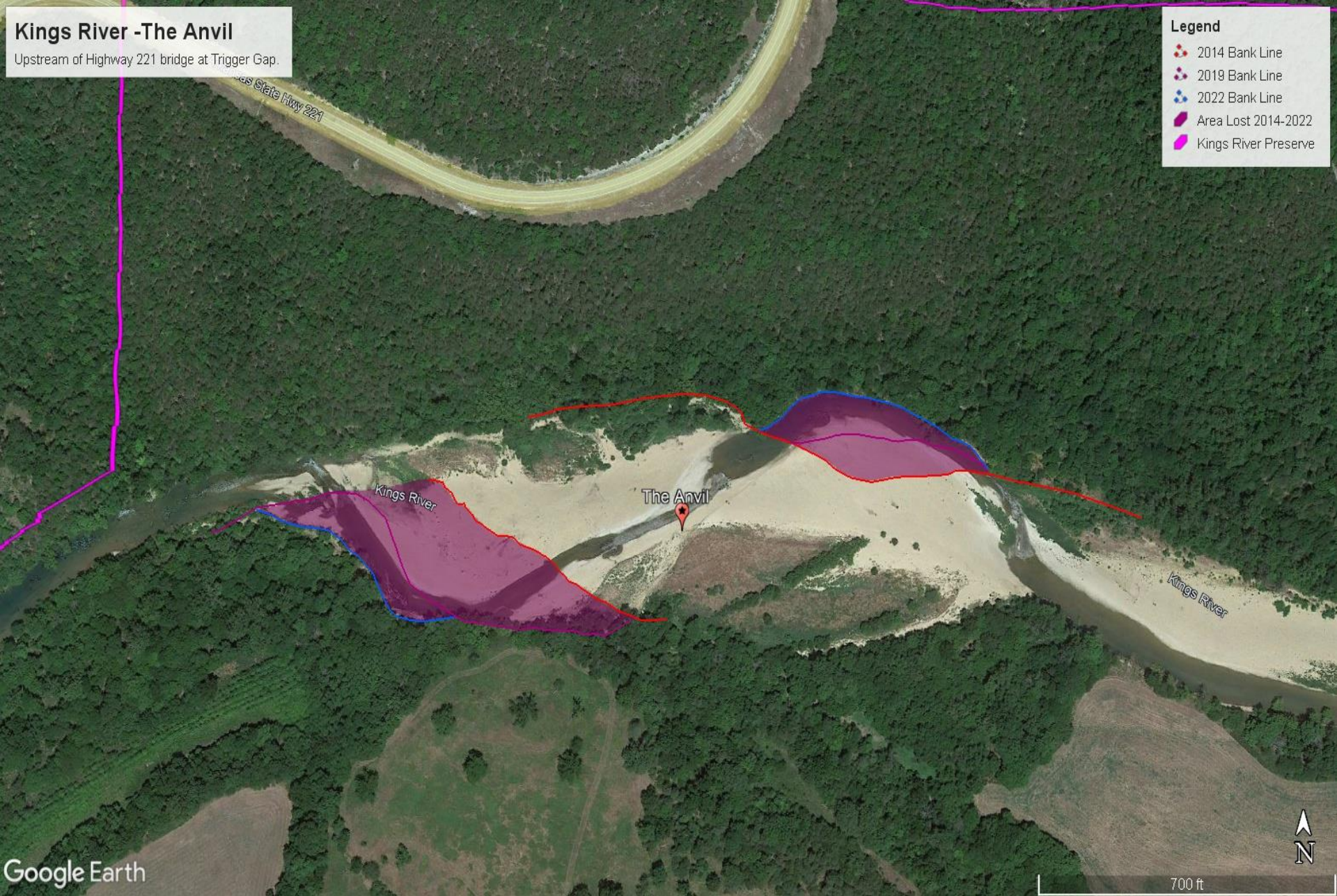






1994-2014 Streambank moved 380 feet. Length of bank 1600 linear feet.  
Measured Sediment Loss 10,631 tons per year.





2014-2022 Measured Sediment Loss 8,812 tons per year.



# McAllister Crossing





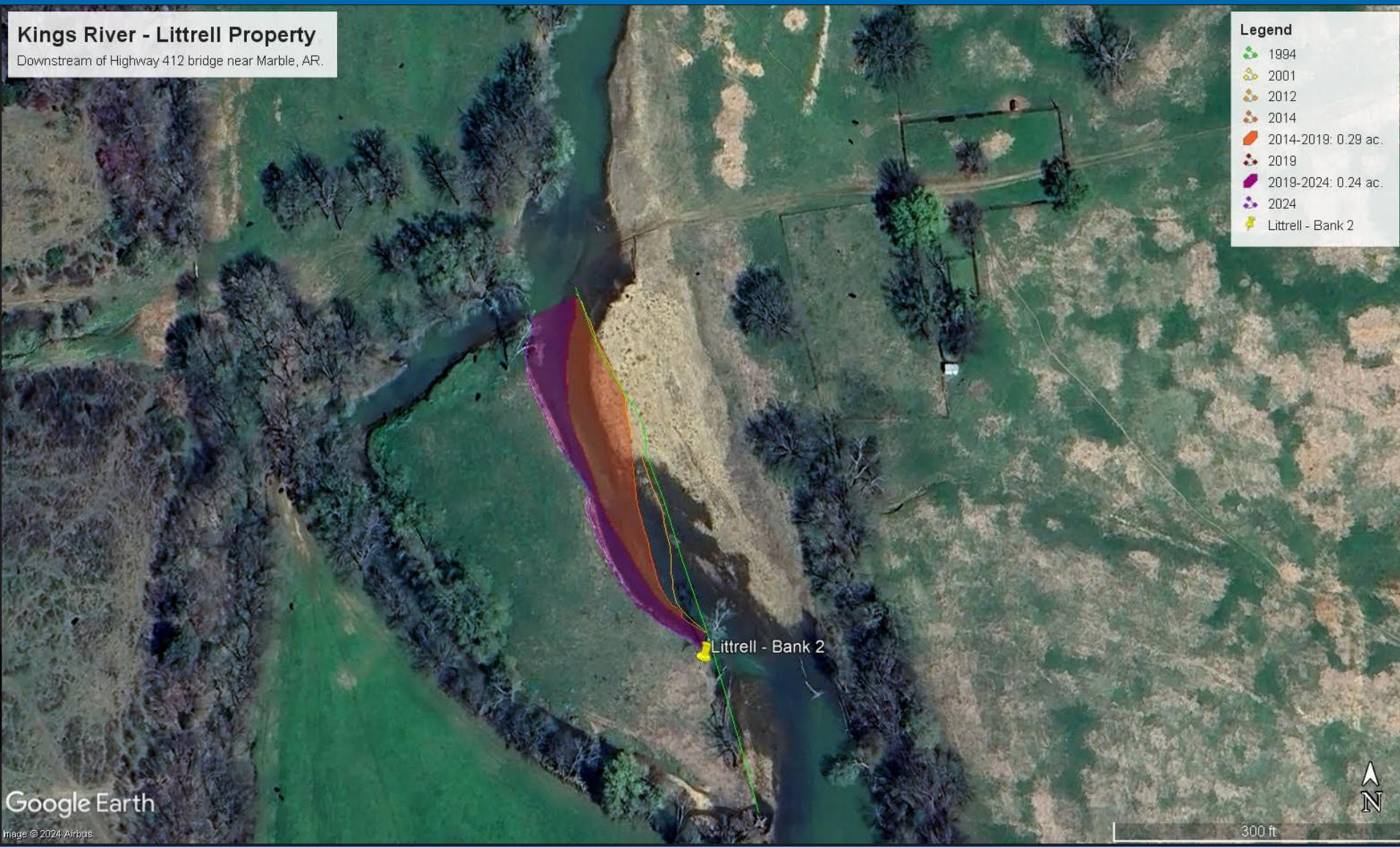
# McAlister Crossing



1994-2014 Streambank moved 100 feet. Length of bank 400 linear feet.  
Measured Sediment Loss 300 tons per year.



# Kings River – Littrell Property





# Kings River – Littrell Property

## Kings River - Littrell Property

Downstream of Highway 412 bridge near Marble, AR.

### Legend

- 2012
- 2019
- 2024
- Littrell - Bank 3

Littrell - Bank 3





1994-2014 Streambank moved 380 feet. Length of bank 1300 linear feet.  
Measured Sediment Loss 10,631 tons per year.



# Kings River Projects Aquatic Beneficiaries

- SGCN's and Threatened or Endangered Species:
  - 6 Mussel Species
  - 3 Fish species
  - 3 Bat species



Autumn Darter



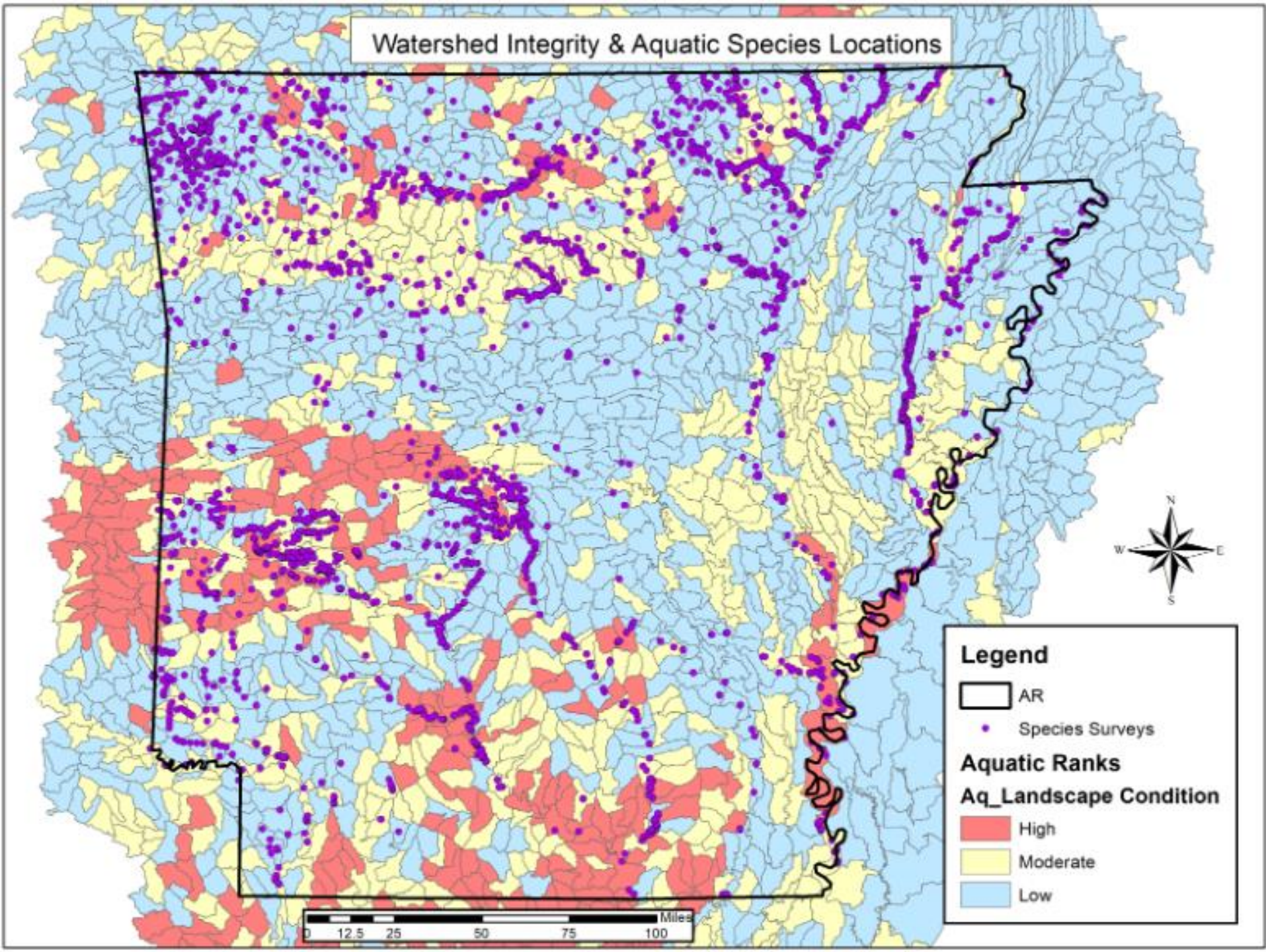
Highland Darter



Rabbitsfoot Mussel

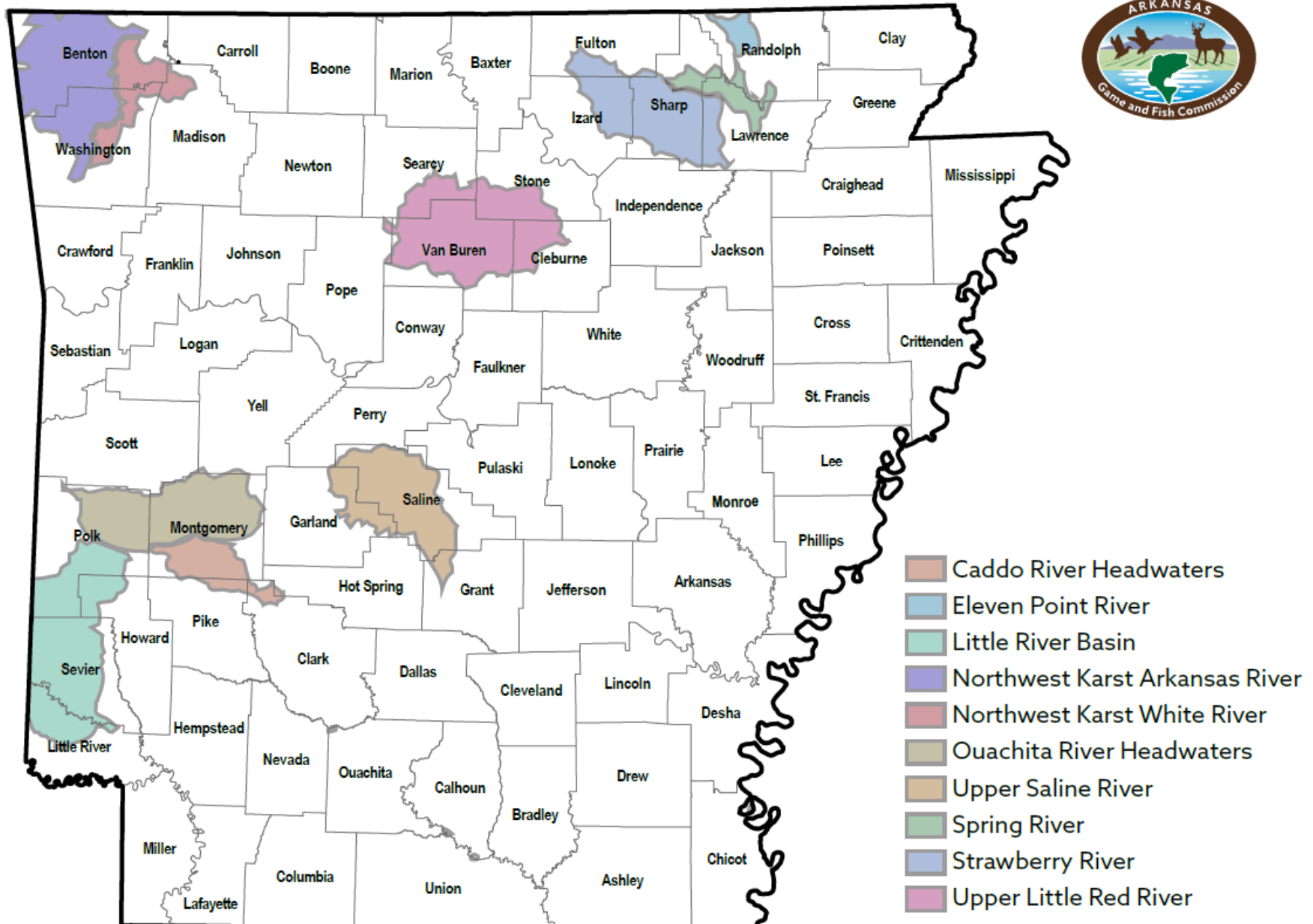


# Watershed Integrity & Aquatic Species Locations





# Arkansas Aquatic Conservation Opportunity Areas





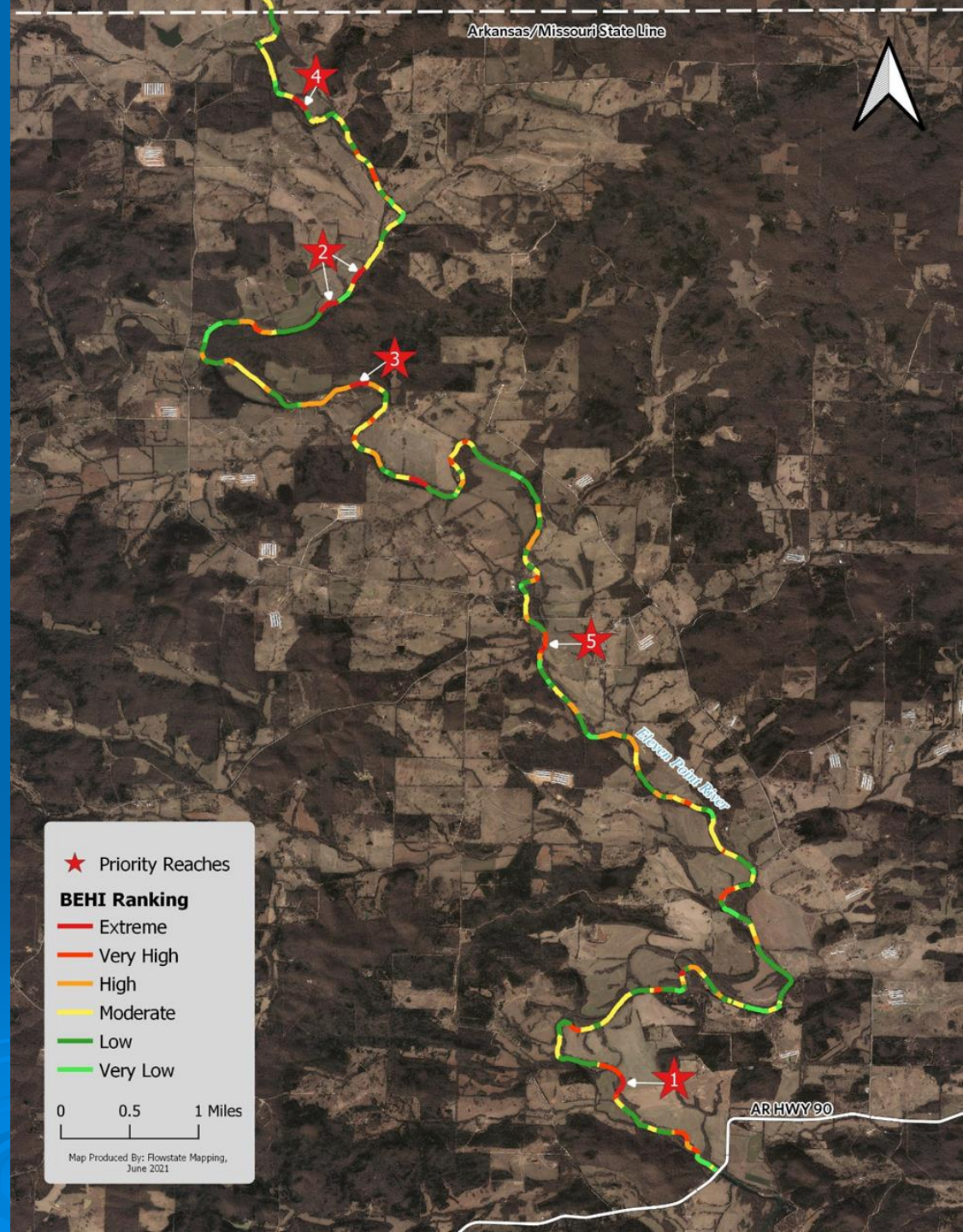
# Eleven Point River Bank Erosion Hazard Index

- 3,452ft. of bank, Avg. bank height 11ft.
- Predicted Sediment Loss 6k(ton/yr)





- Extreme – 5
- Very High – 16
- High – 18
- Moderate - 45





# Totals

## ➤ Kings River

- 17 Projects = 14,550 linear feet
- Cost \$72,750,000

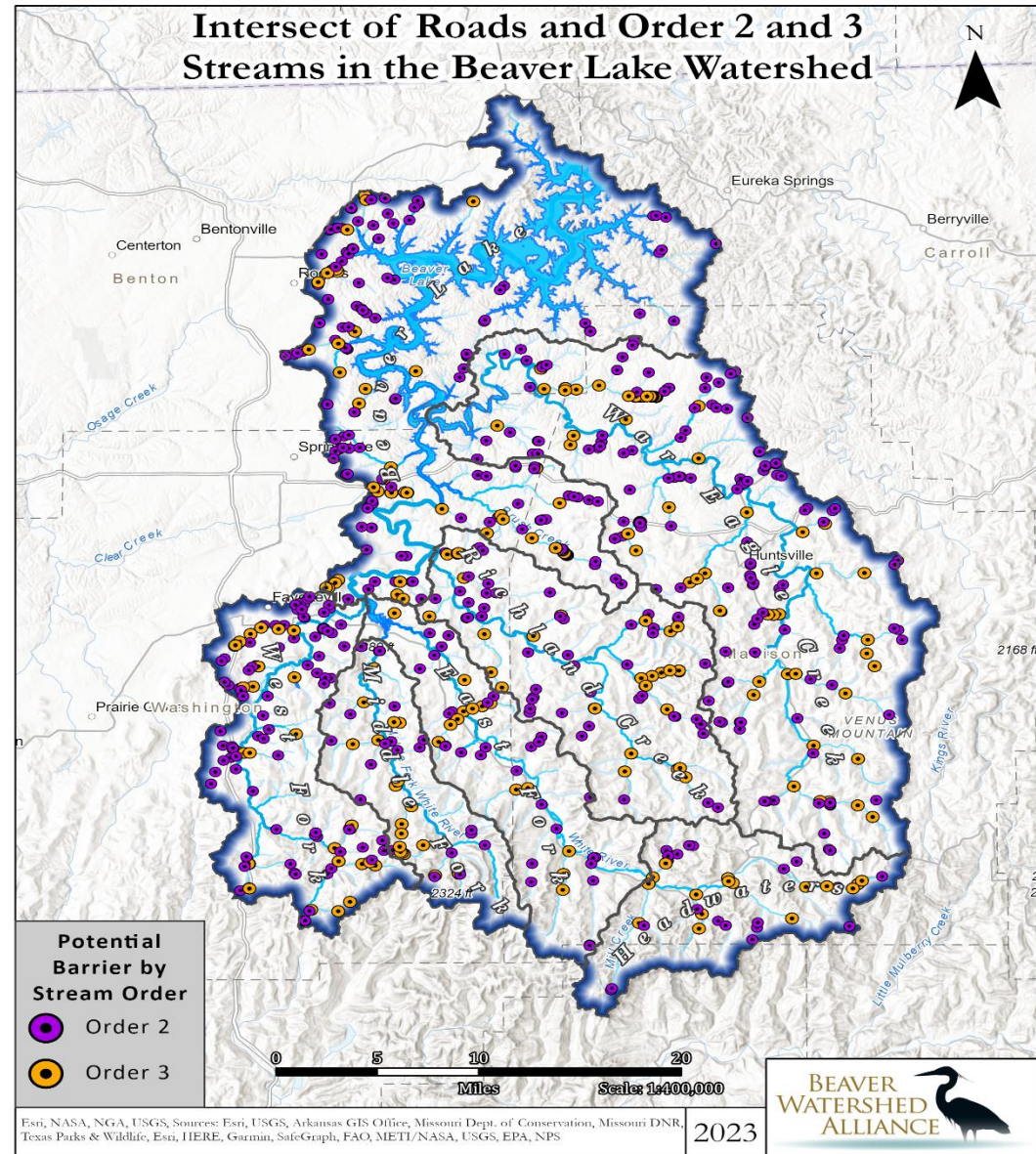
## ➤ Eleven Point River

- 39 Projects =
- Cost



# COA Projects

- 238 Projects
- 523,479 linear feet or 100 miles
- Cost = \$261,739,500





# Additional Projects

## ➤ Buffalo River Watershed

- 3 barrier removal projects – 2400ft.
- 2 stream restoration projects – 1200ft.

## ➤ Lower White River Watershed

- 5 stream restoration projects -13,000ft.





An aerial photograph showing a wide, shallow river with a rocky bed. The water is a murky, light brown color. On the right bank, a white house with a dark roof is partially visible, surrounded by green grass and trees. The river flows from the top left towards the bottom right.

# Thank you!

**“When we build, let us think that we build forever. Let it not be for present delight nor for present use alone. Let it be such work as our descendants will thank us for.” – John Ruskin**